

✓

MICHIGAN
DEPARTMENT OF CONSERVATION
FORESTRY DIVISION

LAND CORNER RECORD

T. 49N N.R. 9W

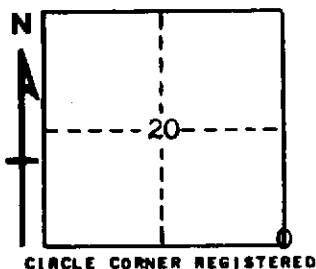
Luce COUNTY

DESCRIPTION OF CORNER Sec. Cor. common to Secs. 20-21-28-29

CORNER MONUMENT 1" pipe with 4" aluminum cap

DATE MONUMENT PLACED AND WITNESSED 5-14-70

WITNESSES TO CORNER..... 9" Jack Pine (S21 NBT) N17°E 29.9'



9" Jack Pine (S20 NBT) N62°W 19.3'

AND

DESCRIPTION IN DETAIL AS TO HOW CORNER WAS LOCATED AND IDENTIFIED OR RESTORED.

This corner placed from one possible witness, a Jack Pine, bearing S40°E 138 lks. Remains of stump found on a low jack pine ridge, the only stump in evidence. Found an original line tree to west of corner. Position checks with corners, 1/2 mile to east and west.

Corner lies in north edge of wet marsh.

SURVEYOR'S SEAL

SIGNED *Billy D. Buckler* DATE 9-22-70
Billy D. Buckler
REGISTERED LAND SURVEYOR