

MICHIGAN
DEPARTMENT OF CONSERVATION
FORESTRY DIVISION

LAND CORNER RECORD

T. 49N N.R. 9N

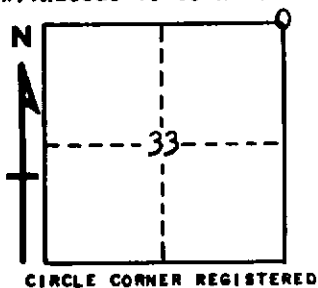
Luce COUNTY

DESCRIPTION OF CORNER Sec. Cor. common to Secs. 27-28-33-34

CORNER MONUMENT 1" pipe with 4" aluminum cap

DATE MONUMENT PLACED AND WITNESSED 8-31-70

WITNESSES TO CORNER..... 10" Red Pine (S28 NBT) N46°W 50.2'



CIRCLE CORNER REGISTERED

AND

DESCRIPTION IN DETAIL AS TO HOW CORNER WAS LOCATED AND IDENTIFIED OR RESTORED.

This corner replaced from two original witnesses, a Jack Pine, bearing N41°E, 13 lks.

Found ~~1~~ tree down, with both faces and all scribe marks in excellent condition, and a Red Pine, bearing S6°W, 54 links. Tree is green and standing. Face with scribe marks are plain and in excellent condition, Pine is now 24" in diameter.

SURVEYOR'S SEAL

SIGNED *Billy D. Buckler*
Billy D. Buckler DATE 9-22-70
REGISTERED LAND SURVEYOR