

#108

**LAND CORNER RECORDATION CERTIFICATE**  
**Filing Requirement of Act 74, Mich. P.A. 1970**

For corners in  
        
 LACE

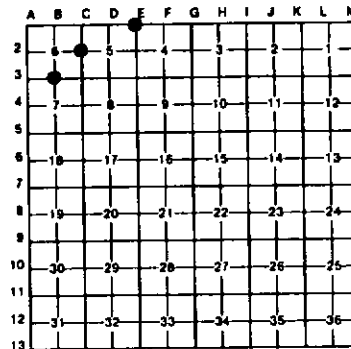
(County)	Located In:	Corner Code #
1. Public Land Survey	T 49N R 9W	B3
	T 49N R 9W	C2
	T 49N R 9W	E1
2. Property Controlling in Section	T _____ R _____	_____
	S _____ T _____ R _____	_____
	S _____ T _____ R _____	_____
3. Miscellaneous Property in Sec.	S _____ T _____ R _____	_____
	S _____ T _____ R _____	_____

Register of Deeds Stamp &amp; File Number

4. Lot No. \_\_\_\_\_, Recorded Plat \_\_\_\_\_  
 5. Private Claims \_\_\_\_\_

I, Stephan J. Szyszkoski, in a field survey on June 23, 1992, 19\_\_\_\_\_, do hereby certify that under requirements of P.A. 74, Michigan P.A. of 1970, the corner points mentioned in lines 1 and 2 above were in conformance with regulations and rules therefore as required in the current manual of survey instructions of the United States Department of the Interior, Bureau of Land Management or by a decree of a Court of Law and/or that the corner points mentioned in lines 3, 4 and 5 above were in conformance with the rules of the Michigan Board of Land Surveyors or by a Decree of a Court of Law; established, re-established, monumented, re-monumented, recovered, found as expressed below.

**NOTE: Not more than 4 corners, all in the same town and range, may be recorded on this certificate.**



**A. Description of original monument and accessories and/or subsequent restoration:**

(B3) Quarter corner between sections 4 and 7. Corner previously recorded by Billy D. Buckler as being monumented by a 1" pipe with a 4" brass cap in 1959. The 1959 witnesses are as follows: 8" Jack Pine B40E 12 Links (1/4S NBT), 6" Jack Pine B05W 36 links, (1/4S NBT).

(C2) Quarter corner common to sections 5-6, T49N-R9W. Corner previously recorded by Billy D. Buckler in 1972 as monumented by a 1" pipe with 4" dia. aluminum cap and witnessed by the following new bearing trees: 10" Jack pine B81W 24.8', 8" Jack pine B46W 41.0'.

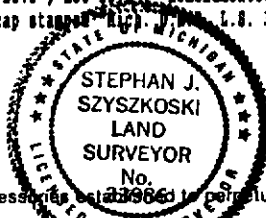
(E1) Section corner common to Sections 4-5, T49N-R9W, and Sections 32-33, T50N-R9W. Corner previously recorded in 1973 by Billy D. Buckler as a 2" iron pipe in firelane intersection. Record witnesses are as follows: 5" Jack pine B23W 34.0', 6" Jack pine B33W 26.6'.

**B. Description of corner evidence found and/or method applied in restoring or reestablishing corner:**

(B3) Found 1" pipe with 4" brass cap at record bearing and distance from both of Buckler's 1959 trees. The trees are both about 11" in diameter and the scribing on the old blazes is obscured by overgrowth.

(C2) Found 1" pipe with 4" aluminum cap at record bearing and distance from the 1972 bearing trees noted above. Drove the monument to 12" below ground surface and marked two new bearing trees.

(E1) Found a 2" iron pipe at record bearing and distance from the 1973 bearing tree B23W, and at record bearing from the 1973 bearing tree B33W. Distance to B33W BT was found to be 25.6', not 26.6'. Re-monumented the corner, at the position of the pipe, with a 1"x32" painted iron pipe capped with a yellow plastic cap stamped "E1" L.S. 33986". Placed this pipe so that its top was 6" below the surface.



**C. Description of monument for corner and accessories established to perpetuate locating the position of the corner:**

(B3) 1" pipe with 4" brass Michigan Dept. of Conservation tablet. Blazed, scribed, and set measuring nails in the following new bearing trees:

9" Jack Pine B42E 38.27' "1/4S NBT"  
 9" Jack Pine B25W 17.83' "1/4S NBT"  
 Placed measuring nails in the record bearing trees:

11" Jack Pine B37E 8.28'  
 11" Jack Pine B03W 23.83'

(C2) 1" pipe with 4" aluminum cap. Blazed, scribed, and set measuring nails in the following new bearing trees:  
 8" Jack pine B20E 15.56', "1/4S NBT"  
 10" Jack pine B73E 31.68', "1/4S NBT"  
 re-scribed and set measuring nails in the record bearing trees:

9" Jack pine B83W 25.27', "1/4S"  
 10" Jack pine B44W 41.29', "1/4S"

(E1) Placed 1"x32" capped iron pipe.

Blazed, scribed, and set measuring nails in the following new bearing trees:  
 10" Jack pine B50E 40.70' "B33 NBT"  
 10" Jack pine B37E 43.28' "B4 NBT"  
 placed measuring nails in and re-scribed the record bearing trees:  
 10" Jack pine B26W 25.62', "B32"  
 10" Jack pine B25W 33.95', "B5"

Signed by Stephan J. Szyszkoski Date 10-15-92  
 Surveyor's Michigan License No. 33986