

**LAND CORNER RECORDATION CERTIFICATE**  
 Filing Requirement of Act 74, Mich. P.A. 1970

For corners in  
Locality

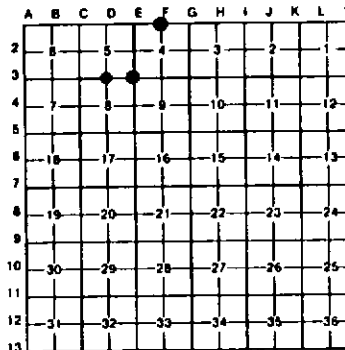
County	Located In:	Corner Code #
1. Public Land Survey	T 49N R 9W	F1
	T 49N R 9W	E3
	T 49N R 9W	D3
2. Property Controlling in Section	T _____ R _____	_____
	S _____ T _____ R _____	_____
	S _____ T _____ R _____	_____
3. Miscellaneous Property in Sec.	S _____ T _____ R _____	_____
	S _____ T _____ R _____	_____

Register of Deeds Stamp &amp; File Number

4. Lot No. \_\_\_\_\_, Recorded Plat \_\_\_\_\_  
 5. Private Claims \_\_\_\_\_

I, Stephan J. Szyszkoski, in a field survey on June 23, 1992, 19\_\_\_\_\_, do hereby certify that under requirements of P.A. 74, Michigan P.A. of 1970, the corner points mentioned in lines 1 and 2 above were in conformance with regulations and rules therefore as required in the current manual of survey instructions of the United States Department of the Interior, Bureau of Land Management or by a decree of a Court of Law and/or that the corner points mentioned in lines 3, 4 and 5 above were in conformance with the rules of the Michigan Board of Land Surveyors or by a Decree of a Court of Law, established, re-established, monumented, re-monumented, recovered, found as expressed below.

**NOTE:** Not more than 4 corners, all in the same town and range, may be recorded on this certificate.



## A. Description of original monument and accessories and/or subsequent restoration:

- (F1) Quarter corner common to section 4, T49N-R9W and section 33, T50N-R9W. Corner previously recorded by Billy D. Buckler as having been reestablished and remonumented in 1971. Buckler placed a 1" pipe with a 4" aluminum cap with the following BT's: 10" J. Pine S33E 48.5', 10" J. Pine N36W 54.8'.  
 (E3) Section corner common to Sec. 4-5-8-9. Corner previously recorded by Billy D. Buckler being a perpetuation of corner set by Marcus Schaaf, Reg. Surveyor. Buckler found a 2" iron pipe buried beneath the road intersection in 1959 and scribed the following bearing trees: 9" J. Pine S55E 38 Links, 6" J. Pine N30E 80.5 Links.  
 (D3) Quarter corner common to Sections 5 and 8. Corner previously recorded in 1971 by Billy D. Buckler as monumented by a 1" pipe with a 4" aluminum cap. Buckler's witnesses are as follows: 5" J. Pine S50W 35.8', 7" J. Pine N35E 31.9'.

## B. Description of corner evidence found and/or method applied in restoring or reestablishing corner:

- (F1) Found Buckler's monument as recorded at record bearing and distance from J. Pine NBT S33E. The second BT is gone. Corner lies in the centerline of E-W firelane, 40' east of the centerline of Co. Rd. 423. Scribed top blaze and placed measuring nail in Buckler's BT and marked three additional witness trees, as described below.  
 (E3) Found a 2" dia. x 18" iron pipe set into a 9"x9" square concrete base. Found both of Buckler's BT's agreeing. I lowered this monument so that its top is 6" below the road surface, and marked witness trees as described below.  
 (D3) Found 1" pipe with 4" aluminum cap at the south edge of E-W firelane 4" below ground surface, in accord with Buckler's witness trees. Scribed new top blaze, and placed measuring nails in Buckler's trees, and marked two new witness trees as described below. Found a 2" leaning iron pipe, probably placed by Marcus Schaaf ca. 1920's, Southeast approximately 3' distant.

## C. Description of monument for corner and accessories established to perpetuate locating the position of the corner: No. 33986

- |   |  |  |
|---|--|--|
| (F1) Found 1" pipe with 4" aluminum cap. Blazed, scribed, and set measuring nails in the following new bearing trees:<br>10" J. Pine S70E 68.65' mrd "1/4S NBT"<br>10" J. Pine S34W 53.1' mrd "1/4S NBT"<br>9" J. Pine N48E 19.95' mrd "1/4S NBT"<br>10" J. Pine S29E 48.78' (1971 NBT)<br>Pd. 2" iron pipe N88W, 3.9', probably by Marcus Schaaf, Reg. Surveyor. | (E3) 2" pipe set in a concrete base. Blazed, scribed, and placed measuring nails in the following new bearing trees: 8" J. Pine N46W 50.17' "85 NBT"<br>8" J. Pine S81W 53.40' "88 NBT"<br>Set measuring nails in the record bearing trees:<br>10" J. Pine N32E 53.45'<br>12" J. Pine S53E 25.56' remarked "89"<br>Corner falls in intersection of fire lanes E-S-E-W. | (D3) Found 1" pipe with 4" aluminum cap. Blazed, scribed, and set measuring nails in the following new bearing trees:<br>8" J. Pine S10E 30.28' "1/4S NBT"<br>7" J. Pine N10W 44.76' "1/4S NBT"<br>Re-measured to the record bearing trees as follows:<br>8" J. Pine S53W 35.90' remarked "1/4S"<br>8" J. Pine N26E 32.10' remarked "1/4S" |
|---|--|--|

Signed by Stephan J. Szyszkoski Date 10-15-92  
 Surveyor's Michigan License No. 33986