

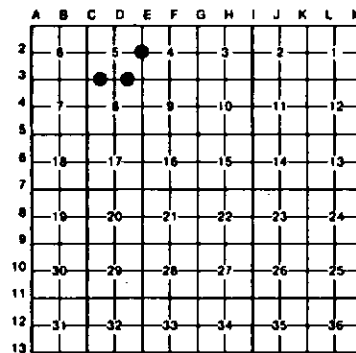
LAND CORNER RECORDATION CERTIFICATE  
Filing Requirement of Act 74, Mich. P.A. 1970

For corners in  
Locality

County	Located In:	Corner Code
1. Public Land Survey	T 49N R 9W	82
	T R	
	T R	
	T R	
2. Property Controlling in Section	S 5 T 49N R 9W	15
	S 5 T 49N R 9W	16
3. Miscellaneous Property in Sec.	S T R	
	S T R	

Register of Deeds Stamp & File Number

4. Lot No. \_\_\_\_\_, Recorded Plat \_\_\_\_\_  
5. Private Claims \_\_\_\_\_



I, Stephan J. Szyszkoski, in a field survey on June 23, 1992, 19\_\_\_\_, do hereby certify that under requirements of P.A. 74, Michigan P.A. of 1970, the corner points mentioned in lines 1 and 2 above were in conformance with regulations and rules therefore as required in the current manual of survey instructions of the United States Department of the Interior, Bureau of Land Management or by a decree of a Court of Law and/or that the corner points mentioned in lines 3, 4 and 5 above were in conformance with the rules of the Michigan Board of Land Surveyors or by a Decree of a Court of Law, established, re-established, monumented, re-monumented, recovered, found as expressed below.

NOTE: Not more than 4 corners, all in the same town and range, may be recorded on this certificate.

A. Description of original monument and accessories and/or subsequent restoration:

- (82) Quarter corner common to Sections 4-5. Corner previously recorded by Billy D. Buckler in 1973. 1973 witnesses are as follows: 6" Jack Pine N84W 20.0', 8" Jack Pine South 34.5'.
- (15-Sec. 5) West 1/16 between Sections 5 and 8. Corner previously recorded in 1971 by Billy D. Buckler who placed a 1" pipe with 4" aluminum cap midway and on line between Section corner to west and 1/4 corner to east. Buckler's bearing trees are as follows: 8" J. Pine N48W 75.5', 10" J. Pine S84E 35.4'.
- (16-Sec. 5) East 1/16 corner between Sections 5 and 8. Corner previously recorded in 1971 by Billy D. Buckler, midway and on line between Section corner to east and 1/4 corner to west. Buckler placed a 1" pipe with a 4" aluminum cap at the corner and marked the following bearing trees: 5" J. Pine N55W 12.0', 6" J. Pine S43E 45.0'.

B. Description of corner evidence found and/or method applied in restoring or reestablishing corner:

- (82) Found 1" pipe with 4" dia. brass Michigan Dept. of Conservation tablet at record bearing and distance from 1973 jack pine bearing tree N84W, 20.0'. Jack pine NBT to south was not recovered.
- (15-Sec. 5) Found monument and accessories as described by Buckler's record. Scribing is visible on both 1971 BT's. Scribbled new top blaze on Buckler's BT's and marked two new bearing trees described below.
- (16-Sec. 5) Found Buckler's 1" capped pipe agreeing with witness trees noted above at the north edge of E-W firelane. Drove the pipe so that the aluminum tablet is 6" below the road surface. Scribbled new top blaze and measuring nails in the 1971 BT's and marked two new witness trees as described below.



C. Description of monument for corner and accessories established to perpetuate location of the position of the corner:

- |   |  |  |
|---|--|--|
| (82) Found 1" pipe with 4" brass tablet. Blazed, scribed, and set measuring nails in the following new bearing trees: 9" Jack pine S24E, 44.58' "1/4S NBT" 9" | (15-Sec. 5) Found 1" pipe with 4" aluminum HDRR cap. Blazed, scribed, and set measuring nails in the following new bearing trees: 8" J. Pine S65W 26.16' "1/16 BT" 5" J. Pine S27E 34.04' "1/16 BT" Re-measured to Buckler's BT's: 11" J. Pine South 35.80' remarkd "1/16" 12" J. Pine N55W 75.00' remarkd "1/16" Corner lies in South rat of E-W firelane, 4" below road surface. | (16-Sec. 5) Found 1" pipe with 4" aluminum HDRR tablet. Blazed, scribed, and set measuring nails in the following new bearing trees: 7" J. Pine N30E 13.35' "1/16 BT" 7" J. Pine S39W 32.94' "1/16 BT" Re-measured to the 1971 BT's: 8" J. Pine S39E 45.12' remarkd "1/16" 7" J. Pine N54W 12.18' remarkd "1/16" |
|---|--|--|

Signed by Stephan J. Szyszkoski Date 10-15-92  
Surveyor's Michigan License No. 33986