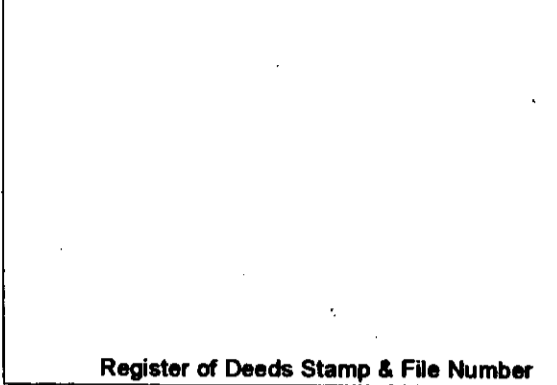


LAND CORNER RECORDATION CERTIFICATE
Filing Requirement of Act 74, Mich. P.A. 1970

For corners in

<u>Luce</u> (County)	Located In:	Corner Code #	
1. Public Land Survey	T 49N R 9W	E11	
	T R		
	T R		
	T R		
2. Property Controlling in Section	S 32 T 49N R 9W	5	
	S T R		
3. Miscellaneous Property in Sec.	S T R		
	S T R		

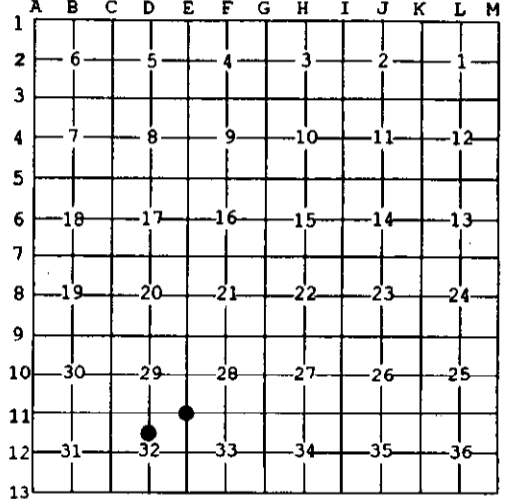


4. Lot No. _____, Recorded Plat _____
 5. Private Claims _____

E11 Feb 26 2002
 5 May 14 2002

I, Stephan J. Szyszkoski, in a field survey on _____, 20____ do hereby state that under requirements of P.A. 74, Michigan P.A. of 1970, the corner points mentioned in lines 1 and 2 above were in conformance with regulations and rules therefore as required in the current manual of survey instructions of the United States Department of the Interior, Bureau of Land Management or by a decree of a Court of Law and /or that the corner points mentioned in lines 3, 4 and 5 above were in conformance with the rules of the Michigan Board of Land Surveyors or by a Decree of a Court of Law; established, re-established, monumented, recovered, found as expressed below:

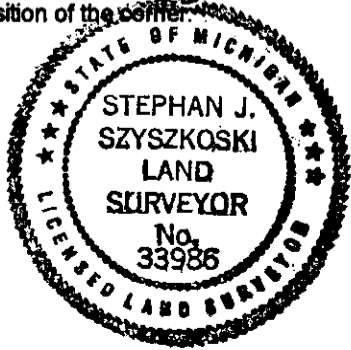
NOTE: Not more than 2 corners, all in the same town and range, may be recorded on this certificate.



A. Description of original monument and accessories and/or subsequent restoration:
 (E11) Corner common to Sections 28-29-32-33. 1850: Established by Harvey Mellen, DS: "N20'E Corrected btwn Sections 32 & 33...79.74 Set post at corner of Sections 28,29,32 & 33. Sp. Pine 8 S44W 34, Sp. Pine 8 N40E 39." 1970: Remonumented 8/31/70 by Billy D. Buckler, RLS: "This corner replaced from remains of two original witnesses; a Jack Pine stump, bearing S44W 34 lks; found burned face and notch in evidence. Found stump bottom, bearing N40E 39 lks. Cor. lies in a wet spruce and jack pine marsh. Distance east to original pine line tree checks (3.95 chs.) Corner monument 1" pipe with 4" aluminum, cap. Witnesses: 17" Red Pine (S33 NBT) S75E 85.4', 7" W.Pine (S28 NBT) N23E 42.4'."
 (5-Sec. 32) North 1/16 corner, Section 32. Not established in the original survey.

B. Description of corner evidence found and/or method applied in restoring or reestablishing corner:
 (E11) Recovered the 1970 monument, a 1" ID iron pipe with 4" aluminum State of Michigan tablet, in good condition and at record bearing and distance from Mr. Buckler's accessories found as follows: The Red Pine is in good condition (did not measure DBH), the W.Pine is a dead, standing stub. Left the monument in place and made three new witnesses. True bearing to original corner E12 is S18'W.
 (5-Sec. 32) Established the corner midway and on a straight line between Quarter corner and Center of Section 1321.66' north and south.

C. Description of monument for corner and accessories established to perpetuate locating the position of the corner:
 (E11) Found 1" ID I. pipe with 4" alum. State of MI cap. Made blazes facing the corner (did not scribe) and set measuring nails in:
 7" W.Pine N05E 14.09'
 4" B.Spruce S80W 17.6'
 6" J.Pine N46W 41.3'
 Bearings are magnetic. Distances are to nail with tag.
 (5) Set 1" IDx36" I. pipe with 4" alum. MDNR cap. Blazed, scribed, and set measuring nails in:
 8" Balsam N69E 28.85' "N1/16 BT"
 8" Balsam N04E 8.65' do
 6" Balsam N32W 7.05' do
 5" Balsam N88W 7.7' do
 Set Cedar post adjacent. Bearings are magnetic. Distances are to nail with tag.



Signed by Stephan J. Szyszkoski
 Surveyor's Michigan License No. 33986

Date 8/19/02