

MICHIGAN
DEPARTMENT OF CONSERVATION
FORESTRY DIVISION

LAND CORNER RECORD

T. 49 N.R. 10 W

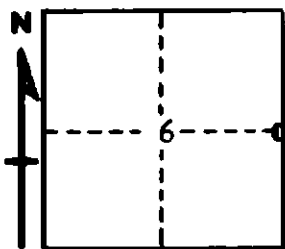
Lucas COUNTY

DESCRIPTION OF CORNER 1/4 Corner for Sections 6-5.

CORNER MONUMENT 1" Iron Pipe with 4" Aluminum Cap

DATE MONUMENT PLACED AND WITNESSED 5/25/1965 Bray and Hinds

WITNESSES TO CORNER..... 7" Jack Pine (1/4S NBT), S 70° E, 08 Links



7" Jack Pine (1/4S NBT), N 38° W, 14 Links

AND

CIRCLE CORNER REGISTERED

DESCRIPTION IN DETAIL AS TO HOW CORNER WAS LOCATED AND IDENTIFIED OR RESTORED.

This Corner was set on a Line on same bearing as West Town Line and the proportionated distance. No Original Evidence.

SURVEYOR'S SEAL

SIGNED Frank J. Bray DATE 6/8/1965
REGISTERED LAND SURVEYOR