

MICHIGAN
DEPARTMENT OF CONSERVATION
FORESTRY DIVISION

LAND CORNER RECORD

T. 49N N.R. 10W

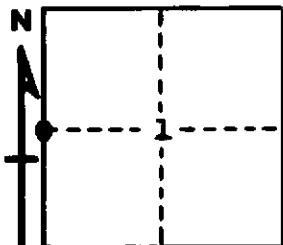
Luce COUNTY

DESCRIPTION OF CORNER ½ Cor. bet. Secs. 1-2

CORNER MONUMENT 1" pipe with 4" aluminum cap

DATE MONUMENT PLACED AND WITNESSED 8-11-70

WITNESSES TO CORNER..... 10" Jack Pine (½ NBT) N58°E 36.1'



CIRCLE CORNER REGISTERED

6" Jack Pine (½ NBT) N10°W 19.4'

AND

DESCRIPTION IN DETAIL AS TO HOW CORNER WAS LOCATED AND IDENTIFIED OR RESTORED.

This corner replaced as set by ~~the~~ H. Lawrence, R.L.S.
Found a scribed wood post and remains of one J. Pine stump in proper position for
a recorded witness.

Corner lies 20' SE of a trail and on east edge of an old jack pine cutting.

SURVEYOR'S SEAL

SIGNED *Billy D. Buckler*
Billy D. Buckler DATE 8-21-70
REGISTERED LAND SURVEYOR