

STATE OF MICHIGAN
DEPARTMENT
OF
NATURAL RESOURCES

LAND CORNER RECORD

Luce COUNTY

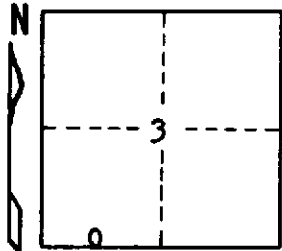
T 49N R 10W

DESCRIPTION OF CORNER West 1/16 Cor. bet. Secs. 3-10

CORNER MONUMENT 1" pipe with 4" aluminum cap

DATE MONUMENT PLACED AND WITNESSED 10/9/71

WITNESSES TO CORNER..... 20" R. Pine S05°E 50.7'



8" R. Pine N69°E 41.8'

AND

CIRCLE CORNER REGISTERED

DESCRIPTION IN DETAIL AS TO HOW CORNER WAS LOCATED AND IDENTIFIED OR RESTORED.

Corner placed midway and on line bet. Sec Cor. to west and $\frac{1}{4}$ Cor. to east.

Corner lies in North rut of east and west fireline.

SURVEYOR'S SEAL

SIGNED

Billy D. Buckler

Billy D. Buckler
REGISTERED LAND SURVEYOR

DATE 12/17/71

DISTRIBUTION:

County Courthouse
Area Forester (Regions I & II)
District or Region Surveyor
Forestry Div., Lansing ✓

R 4047
Rev. 10/68