

STATE OF MICHIGAN
DEPARTMENT
OF
NATURAL RESOURCES

LAND CORNER RECORD

Luce COUNTY

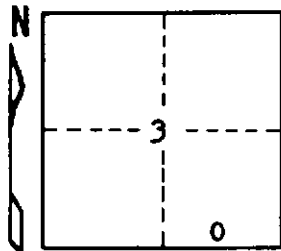
T 49N R 10W

DESCRIPTION OF CORNER East 1/16 Cor. bet. Secs. 3-10

CORNER MONUMENT 1" pipe with 4" aluminum cap

DATE MONUMENT PLACED AND WITNESSED 10/9/71

WITNESSES TO CORNER..... 8" R. Pine N14°W 12.9'



10" J. Pine S30°W 56.6'

AND

CIRCLE CORNER REGISTERED

DESCRIPTION IN DETAIL AS TO HOW CORNER WAS LOCATED AND IDENTIFIED OR RESTORED.

Corner placed midway and on line bet. Sec. Cor. to east and $\frac{1}{4}$ Cor. to west.

Corner lies on North side of E-W fireline.

SURVEYOR'S SEAL

SIGNED

Billy D. Buckler
Billy D. Buckler
REGISTERED LAND SURVEYOR

DATE

12/17/71

DISTRIBUTION:

County Courthouse
Area Forester (Regions I & II)
District or Region Surveyor
Forestry Div., Lansing ✓

R 4047
Rev. 10/68