

LAND CORNER RECORDATION CERTIFICATE
Filing Requirement of Act 74, Mich. P.A. 1970

For corners in

Luce

(County)

Located in:

Corner Code #

1. Public Land Survey

T ___ R ___
T ___ R ___
T ___ R ___
T ___ R ___

2. Property Controlling
in Section

S 10 T 49N R 10W 5
S 10 T 49N R 10W 6

3. Miscellaneous
Property in Sec.

S ___ T ___ R ___
S ___ T ___ R ___

Register of Deeds Stamp & File Number

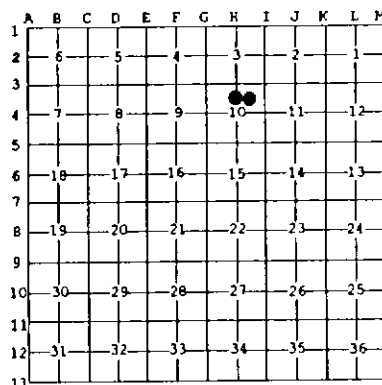
4. Lot No. _____, Recorded Plat _____

5. Private Claims _____

Sep 10 1995

I, Stephan J. Szyszkoski, in a field survey on _____, 19____ do hereby state that under requirements of P.A. 74, Michigan P.A. of 1970, the corner points mentioned in lines 1 and 2 above were in conformance with regulations and rules therefore as required in the current manual of survey instructions of the United States Department of the Interior, Bureau of Land Management or by a decree of a Court of Law and/or that the corner points mentioned in lines 3, 4 and 5 above were in conformance with the rules of the Michigan Board of Land Surveyors or by a Decree of a Court of Law, established, re-established, monumented, recovered, found as expressed below:

NOTE: Not more than 2 corners, all in the same town and range, may be recorded on this certificate.



A. Description of original monument and accessories and/or subsequent restoration:

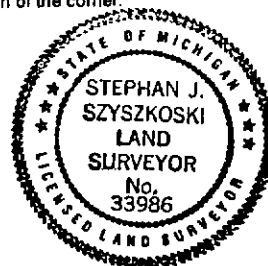
- (5-Sec. 10) North 1/16 corner, Section 10. Corner not established in the original survey. Found no subsequent record.
- (6-Sec. 10) Northeast 1/16 corner, Section 10. Corner not established in the original survey. Found no subsequent record.

B. Description of corner evidence found and/or method applied in restoring or reestablishing corner:

- (5-Sec. 10) Found no evidence of prior monumentation at the corner position. Established the corner midway and on a straight line between 1/4 Corner 1319.19' North and Center of Section 1319.19' South. At the position for the corner, I placed a 1" I.D. x 36" iron pipe capped with a 4" dia. cast aluminum MDNR tablet appropriately stamped. Corner placed and witnessed by T.Stark and D.Lampela, Newberry District Office.
- (6-Sec. 10) Found no evidence of prior monumentation at the corner position. Established the corner at the intersection of straight lines connecting opposite 1/16 corners. The 1/16 corners North, West, and East are monumented. That to the south is not monumented as of this date. At the position for the corner I placed a 1" I.D. x 36" iron pipe capped with a 4" dia. cast aluminum MDNR tablet, appropriately stamped. Corner placed and witnessed by T.Stark and D. Lampela, Newberry District Office.

C. Description of monument for corner and accessories established to perpetuate locating the position of the corner.

- (5) Set 1" iron pipe with 4" MDNR cap. Blazed, scribed, and set measuring nails in the following:
6" J. Pine N35W 31.7' "N1/16 BT"
6" J. Pine N17E 38.4' "N1/16 BT"
6" J. Pine N46E 33.95' "N1/16 BT"
8" R. Pine N77E 61.95' "N1/16 BT"
Placed a 3" squared and scribed cedar post adjacent. Bearings are magnetic.
- (6) Set 1" iron pipe with 4" MDNR cap. Blazed, scribed, and set measuring nails in the following:
10" J. Pine N35W 18.75' "NE1/16 BT"
12" R. Pine S37W 29.05' "NE1/16 BT"
14" W. Pine S11W 26.85' "NE1/16 BT"
10" R. Pine S06E 25.45' "NE1/16 BT"
Placed a 4" squared and scribed cedar post adjacent. Bearings are magnetic.



Signed by Stephan J. Szyszkoski
Surveyor's Michigan License No. 33986

Date 1-21-97

For the Michigan Department of Natural Resources - Forest Management Division