

LAND CORNER RECORDATION CERTIFICATE
Filing Requirement of Act 74, Mich. P.A. 1970

For corners in

Locality (County)	Located In:	Corner Code #
1. Public Land Survey	T 49N R 19W	G4
	T R	
	T R	
	T R	
2. Property Controlling in Section	S 10 T 49N R 19W	4
	S T R	
3. Miscellaneous Property in Sec.	S T R	
	S T R	

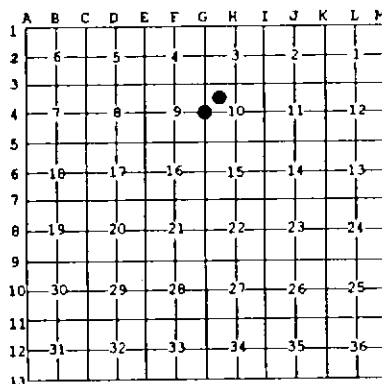
Register of Deeds Stamp & File Number

4. Lot No. _____, Recorded Plat _____
5. Private Claims _____

4 Sep 10 1996
G4 Jul 11 1996

I, Stephan J. Szyszkoski, in a field survey on _____, 19____ do hereby state that under requirements of P.A. 74, Michigan P.A. of 1970, the corner points mentioned in lines 1 and 2 above were in conformance with regulations and rules therefore as required in the current manual of survey instructions of the United States Department of the Interior, Bureau of Land Management or by a decree of a Court of Law and for that the corner points mentioned in lines 3, 4 and 5 above were in conformance with the rules of the Michigan Board of Land Surveyors or by a Decree of a Court of Law; established, re-established, monumented, recovered, found as expressed below:

NOTE: Not more than 2 corners, all in the same town and range, may be recorded on this certificate.



A. Description of original monument and accessories and/or subsequent restoration:

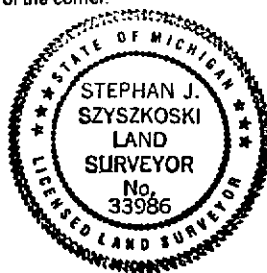
[G4] Quarter corner common to Sections 9-10. Corner reestablished in 1972 by Billy D. Buckler, RLS, midway and on a straight line between Section Corners. Rewitnessed in 1991 by Gerald L. Wiggins, RLS. Set by Billy D. Buckler, R.L.S. 8-18-1972. DNR monument. 10" W. Pine N37E 14.0', 10" R. Pine S04E 41.8". Wiggins reports: "Both witness trees have been cut". 1991 witnesses: 6" W. Birch North 27.4', 4" Balsam N14W 23.3', 6" Maple N60W 39.4', 5" Balsam N70W 49.5'.
(4-Sec. 10) Northwest 1/16 corner, Section 10. Corner not established in the original survey. Found no subsequent records.

B. Description of corner evidence found and/or method applied in restoring or reestablishing corner:

[G4] Found 1" pipe with 4" dia. aluminum MDNR tablet at the corner position, at record bearing and distance from all four 1991 witnesses. The monument is in good condition. Left the monument in place and marked three new accessories as described below. Corner recovered and rewitnessed by T.Stark and D.Lampela, Newberry District Office.
(4-Sec. 10) Found no evidence of prior monumentation at the corner position. Established the corner at the intersection of straight lines connecting opposite 1/16 corners. The 1/16 corners North, East, and West are monumented. The 1/16 corner to the south is not monumented as of this date. At the position for the corner, I placed a 1" I.D.x36" iron pipe capped with a 4" dia. cast aluminum MDNR tablet, appropriately stamped. Corner placed and witnessed by T.Stark and D.Lampela, Newberry District Office.

C. Description of monument for corner and accessories established to perpetuate locating the position of the corner:

[G4] Found 1" iron pipe with 4" MDNR cap. Set measuring nails in the 1991 witness trees (bearings magnetic):	(4) Set 1" iron pipe with 4" MDNR cap. Blazed, scribed, and set measuring nails in the following:
8" W. Birch N33E 27.55'	5" R. Pine N38W 8.5' "NW1/16 BT"
7" Maple N59W 39.6'	6" J. Pine N40E 9.35' "NW1/16 BT"
6" Balsam N69W 49.7'	8" J. Pine S68E 18.2' "NW1/16 BT"
5" Balsam N13W 23.5'	7" J. Pine S20W 7.85' "NW1/16 BT"
Marked and set nails in the following:	Placed a 4" squared and scribed cedar post adjacent. Bearings are magnetic.
8" Spruce S58W 36.65' "1/4S NBT"	
4" Maple S51E 17.8' "1/4S NBT"	
6" Spruce N34W 22.35' "1/4S NBT"	



Signed by Stephan J. Szyszkoski Date 1-22-97
Surveyor's Michigan License No. 33986

For the Michigan Department of Natural Resources - Forest Management Division