

**LAND CORNER RECORDATION CERTIFICATE**  
**Filing Requirement of Act 74, Mich. P.A. 1970**

For corners in

Locality (County)	Located In:	Corner Code #
1. Public Land Survey	T 43N R 10W	H5
	T _____ R _____	_____
	T _____ R _____	_____
	T _____ R _____	_____
2. Property Controlling In Section	S 10 T 43N R 10W	15
	S _____ T _____ R _____	_____
3. Miscellaneous Property in Sec.	S _____ T _____ R _____	_____
	S _____ T _____ R _____	_____

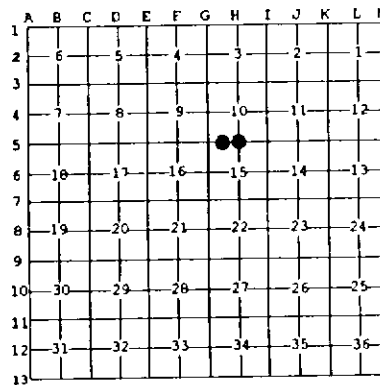
Register of Deeds Stamp & File Number

4. Lot No. \_\_\_\_\_, Recorded Plat \_\_\_\_\_  
 5. Private Claims \_\_\_\_\_

Jun 17 1995

I, Stephan J. Szyszkoski, in a field survey on \_\_\_\_\_, 19\_\_\_\_ do hereby state that under requirements of P.A. 74, Michigan P.A. of 1970, the corner points mentioned in lines 1 and 2 above were in conformance with regulations and rules therefore as required in the current manual of survey instructions of the United States Department of the Interior, Bureau of Land Management or by a decree of a Court of Law and/or that the corner points mentioned in lines 3, 4 and 5 above were in conformance with the rules of the Michigan Board of Land Surveyors or by a Decree of a Court of Law; established, re-established, monumented, recovered, found as expressed below:

NOTE: Not more than 2 corners, all in the same town and range, may be recorded on this certificate.



**A. Description of original monument and accessories and/or subsequent restoration:**

(H5) Quarter corner common to Sections 10-15. Corner reestablished in 1972 by Billy D. Buckler, RLS, midway and on a straight line between section corners. Corner monument: 1" pipe with 4" aluminum cap. Witnesses to corner: 14" W. Pine S07W 75.4', 16" R. Maple S42W 50.4'.  
 (15-Sec. 10) West 1/16 corner between Sections 10-15. Corner established in 1972 by Billy D. Buckler, RLS, midway and on a straight line between Section corner to west and 1/4 Corner to east. Corner monument: 1" pipe with 4" aluminum cap. Witnesses to corner: 12" W. Pine S18E 14.3', 14" W. Pine N15W 6.2'.

**B. Description of corner evidence found and/or method applied in restoring or reestablishing corner:**

(H5) Found the 1972 monument as described, in good condition, and at record bearing and distance from the 1972 witness trees, both in good condition. Left the monument in place, made new BH marks on the 1972 trees, and marked two new accessories as described below. Corner recovered and re-witnessed by T. Stark and D. Lampela, Newberry District Office.  
 (15-Sec. 10) Found the 1972 monument as described, in good condition, and at record bearing and distance from the 1972 witness trees, both recovered in good condition. Determined the monument to be 0.27' West and 0.28' South of the position intended in 1972 and accepted the monument as a careful and faithful determination of the position of the corner. Left the monument in place, made new BH marks on the 1972 witness trees, and marked two new trees as described below. Corner recovered and re-witnessed by T. Stark and D. Lampela, Newberry District Office.

**C. Description of monument for corner and accessories established to perpetuate locating the position of the corner:**

(H5) Found 1" iron pipe with 4" MDNR cap. Blazed, scribed, and set measuring nails in the following: 18" W. Pine S12W 75.6'    1/4S' 16" R. Maple S46W 50.8'    1/4S' 5" Balsam S37W 8.5'    1/4S NBT' 7" Balsam N04E 13.55'    1/4S NBT'	(15) Found 1" iron pipe with 4" MDNR cap. Blazed, scribed and set measuring nails in the following: 13" W. Pine S11E 14.3'    "W1/16" 16" W. Pine N08W 6.4'    "W1/16" 18" R. Pine N74E 35.95'    "W1/16 BT" 13" W. Pine S54E 29.7'    "W1/16 BT"
Placed a squared and scribed cedar post adjacent. Bearings are magnetic.	Placed a squared and scribed cedar post adjacent. Bearings are magnetic.



Signed by Stephan J. Szyszkoski Date 1-22-97  
 Surveyor's Michigan License No. 33986

For the Michigan Department of Natural Resources - Forest Management Division