

LAND CORNER RECORDATION CERTIFICATE  
Filing Requirement of Act 74, Mich. P.A. 1970

For corners in

Luce

(County)

Located in:

Corner Code #

1. Public Land Survey

T 49N R 10W H3

T R

T R

T R

2. Property Controlling in Section

S 10 T 49N R 10W 3

S T R

3. Miscellaneous Property in Sec.

S T R

S T R

Register of Deeds Stamp & File Number

4. Lot No. \_\_\_\_\_, Recorded Plat \_\_\_\_\_

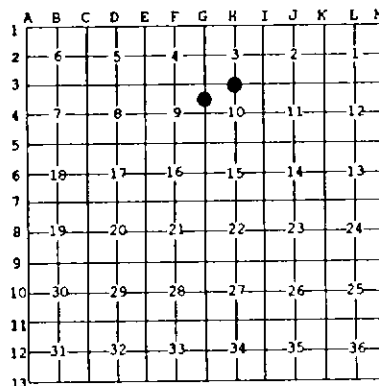
5. Private Claims \_\_\_\_\_

3 Jul 11 1996

H3 Jun 17 1996

I, Stephen J. Szyszkoski, in a field survey on \_\_\_\_\_, 19\_\_\_\_ do hereby state that under requirements of P.A. 74, Michigan P.A. of 1970, the corner points mentioned in lines 1 and 2 above were in conformance with regulations and rules therefore as required in the current manual of survey instructions of the United States Department of the Interior, Bureau of Land Management or by a decree of a Court of Law and/or that the corner points mentioned in lines 3, 4 and 5 above were in conformance with the rules of the Michigan Board of Land Surveyors or by a Decree of a Court of Law, established, re-established, monumented, recovered, found as expressed below:

NOTE: Not more than 2 corners, all in the same town and range, may be recorded on this certificate.



A. Description of original monument and accessories and/or subsequent restoration:

(H3) Quarter corner common to Sections 3-10. Corner reestablished in 1971 by Billy D. Buckler, RLS, "midway and on line between two Sec. Cors.". Corner monument: 1" pipe with 4" aluminum cap. Witnesses to corner: 8" J. Pine S20W 47.0', 8" J. Pine S40E 41.0'. (3-Sec. 10) North 1/16 corner between Sec. 9-10. Corner established in 1972 by Billy D. Buckler, RLS, midway and on line between Section Corner to north and 1/4 Corner to south. Corner monument: 1" pipe with 4" aluminum cap. Witnesses to corner: 8" J. Pine N45W 21.9', 7" J. Pine N23E 35.6'.

B. Description of corner evidence found and/or method applied in restoring or reestablishing corner:

(H3) Recovered the 1971 monument, as described, in good condition, and at record bearing and distance from the two J. Pine witnesses noted above. Both trees are in good condition. Determined the monument to be 1.0' South and 0.1' West of the position intended in 1971. Accepted the monument as a careful and faithful reestablishment of the position of the corner. Left the monument in place, made new BH marks on the 1971 witnesses, set measuring nails with tags in them, and marked two new accessories as described below. Corner recovered and re-witnessed by T. Stark and D. Lampela, Newberry District Office. (3-Sec. 10) Found the 1972 monument, as described, apparently undisturbed, and in good condition. The 1972 witnesses trees were not recovered. Verified the position of the monument as being 0.9' North and 0.2' East of the position intended in 1972 and accepted the monument as a careful and faithful determination of the position of the corner. Left the monument in place and marked four new witnesses as described below. Corner recovered and re-witnessed by T. Stark and D. Lampela, Newberry District Office.

C. Description of monument for corner and accessories established to perpetuate locating the position of the corner:

(H3) Found 1" pipe with 4" MDNR cap. Blazed, scribed, and set measuring nails in the following:  
10' J. Pine-N23N 47.3' 1/4S"  
12' J. Pine S41E 41.3' 1/4S"  
4' J. Pine N60E 12.0' 1/4S NBT"  
6' J. Pine S53W 26.5' 1/4S NBT"  
Placed a 7" squared and scribed cedar post adjacent. Bearings are magnetic.

(3) Found 1" dia. iron pipe with 4" MDNR cap. Blazed, scribed, and set measuring nails in the following:  
10' J. Pine N54E 7.45' "N1/16 BT"  
9' J. Pine S68E 20.60' "N1/16 BT"  
8' R. Pine S45W 37.20' "N1/16 BT"  
2' R. Pine N42W 54.30' "N1/16 BT"  
Placed a squared cedar post approx. 1 ft. east of the monument. Bearings are magnetic.



Signed by Stephen J. Szyszkoski  
Surveyor's Michigan License No. 33986

Date 1-22-97

For the Michigan Department of Natural Resources - Forest Management Division