

MICHIGAN
DEPARTMENT OF CONSERVATION
FORESTRY DIVISION

LAND CORNER RECORD

T. 49 N.R. 11W

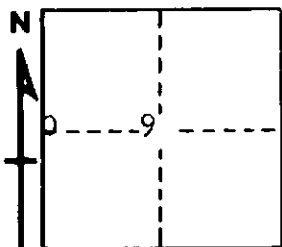
Luce COUNTY

DESCRIPTION OF CORNER 1/4 Corner between Sections 8-9

CORNER MONUMENT 1" Pipe with 4" Brass Cap.

DATE MONUMENT PLACED AND WITNESSED 7-26-61

WITNESSES TO CORNER..... 12" Red Pine (S NBT) S 3°E 38 links



9" W. Pine (S NBT) N35°W 113 links

AND

CIRCLE CORNER REGISTERED

DESCRIPTION IN DETAIL AS TO HOW CORNER WAS LOCATED AND IDENTIFIED OR RESTORED.

This corner was replaced as set by Marcus Schaaf, Registered Land Surveyor. Found Iron Pipe in concrete in place with both W. Pine B.T.'s in evidence.

SURVEYOR'S SEAL

SIGNED Billy D. Buckler DATE January 30, 1962
REGISTERED LAND SURVEYOR
Billy D. Buckler