

MICHIGAN
DEPARTMENT OF CONSERVATION
FORESTRY DIVISION

LAND CORNER RECORD

T. 49 N.R. 11 W.

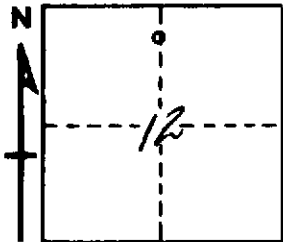
Luce COUNTY

DESCRIPTION OF CORNER Point on calculated N-S 1/4 Line of Sec. 12 on South Shore of Lake.

CORNER MONUMENT 3/8" x 24" Iron Rod.

DATE MONUMENT PLACED AND WITNESSED 5/10/63.

WITNESSES TO CORNER..... 14" J. Pine (X) S. 29° W., 10 Lks.



8" W. Birch (X) N. 73° E., 12½ Lks.

AND

CIRCLE CORNER REGISTERED

DESCRIPTION IN DETAIL AS TO HOW CORNER WAS LOCATED AND IDENTIFIED OR RESTORED.

This Corner was established by Traverse of West, South, and East sides, Section 12. Then Traverse East from M.C. between 11 and 12 to a calculated point on N. and S. 1/4 Line Section 12.

SURVEYOR'S SEAL

Billy D. Buckler
SIGNED Billy D. Buckler DATE 8-12-63
REGISTERED LAND SURVEYOR