

MICHIGAN  
DEPARTMENT OF CONSERVATION  
FORESTRY DIVISION

# LAND CORNER RECORD

T. 49N N.R. 11W

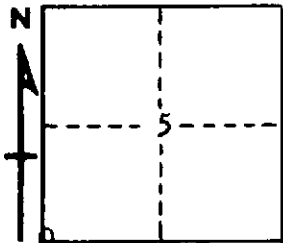
Luce COUNTY

DESCRIPTION OF CORNER Sec. Cor. common to Secs. 5-6-7-8

CORNER MONUMENT 1" pipe with 4" aluminum cap

DATE MONUMENT PLACED AND WITNESSED 8-24-70

WITNESSES TO CORNER..... 7" R. Pine (S6 NBT) N65°W 48.1'



CIRCLE CORNER REGISTERED

5" R. Pine (S7 NBT) S86°W 10.3'

AND

DESCRIPTION IN DETAIL AS TO HOW CORNER WAS LOCATED AND IDENTIFIED OR RESTORED.

This corner was replaced as set by Marcus Schaaf, R.L.S.  
Found a 2" iron pipe in place with remains of two W. Pine stump bottoms, bearing  
N15½E, 30 lks and S11½°W, 15 lks, for original witnesses

SURVEYOR'S SEAL

SIGNED *Billy D. Buckler*  
BILLY D. BUCKLER  
REGISTERED LAND SURVEYOR

DATE 8-31-70