

MICHIGAN
DEPARTMENT OF CONSERVATION
FORESTRY DIVISION

LAND CORNER RECORD

T. 49N N.R. 11W

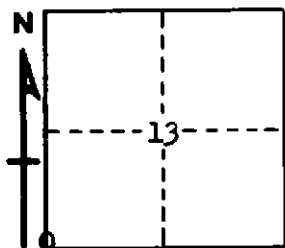
Luce COUNTY

DESCRIPTION OF CORNER Sec. Cor. common to Secs. 13-14-23-24

CORNER MONUMENT 1" pipe with 4" aluminum cap, buried in a 4-way firelane intersection.

DATE MONUMENT PLACED AND WITNESSED 8-27-70

WITNESSES TO CORNER..... 10" Red Pine (S23 NBT) S33°W 21.0'



CIRCLE CORNER REGISTERED

8" Red Pine (S24 NBT) S 29°E 32.3'

AND

DESCRIPTION IN DETAIL AS TO HOW CORNER WAS LOCATED AND IDENTIFIED OR RESTORED.

This corner replaced in intersection of fire lanes.
Found no remains of pine witnesses but did find evidence in the soil, where the iron pipe, set by Marcus Schaaf, R.L.S. had been removed by vehicle traffic.

SURVEYOR'S SEAL

SIGNED *Billy D. Buckler*
Billy D. Buckler
REGISTERED LAND SURVEYOR

DATE 8-31-70