

MICHIGAN  
DEPARTMENT OF CONSERVATION  
FORESTRY DIVISION

LAND CORNER RECORD

T. 49N N.R. 12W

Luce COUNTY

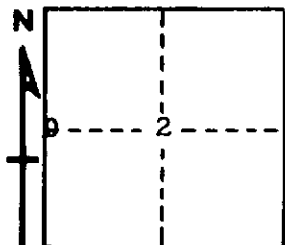
DESCRIPTION OF CORNER  $\frac{1}{4}$  Cor. bet. Secs. 2-3.

CORNER MONUMENT 1" pipe with 4" aluminum cap.

DATE MONUMENT PLACED AND WITNESSED 8-18-70

WITNESSES TO CORNER..... 10" Jack Pine ( $\frac{1}{4}$ S NBT) N7°E 10.8'

22" R. Pine ( $\frac{1}{4}$ S NBT) N77°E 44.8'



CIRCLE CORNER REGISTERED

AND

**DESCRIPTION IN DETAIL AS TO HOW CORNER WAS LOCATED AND IDENTIFIED OR RESTORED.**

This corner replaced at a 2" iron pipe in concrete, placed by Marcus Schaaf, R.L.S.

Found remains of J. Pine B.T., S51°E, 16 links, down and rotted, with upper face and scribe marks remaining.

Found J. Pine stump bottom N20°E, 17 links for the second B.T.

Found and placed with L. Rubick, Forestry Aide.

SURVEYOR'S SEAL

SIGNED Billy D. Buckler DATE 8/26/70  
REGISTERED LAND SURVEYOR