

LAND CORNER RECORDATION CERTIFICATE
Filing Requirement of Act 74, Mich. P.A. 1970

For corners in
Luce

(County)

Located In:

Corner Code #

1. Public Land Survey	T	50N	R	8W	G9
	T	50N	R	8W	E9
	T		R		
	T		R		
2. Property Controlling in Section	S		T	R	
	S		T	R	
3. Miscellaneous Property in Sec.	S		T	R	
	S		T	R	

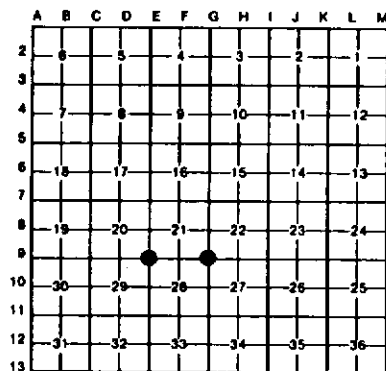
Register of Deeds Stamp & File Number

4. Lot No. _____, Recorded Plat _____
5. Private Claims _____

E9 May 09, 1994

I, Stephan J. Szyszkoski, in a field survey on E9 May 05, 1994, 19_____, do hereby certify that under requirements of P.A. 74, Michigan P.A. of 1970, the corner points mentioned in lines 1 and 2 above were in conformance with regulations and rules therefore as required in the current manual of survey instructions of the United States Department of the Interior, Bureau of Land Management or by a decree of a Court of Law and/or that the corner points mentioned in lines 3, 4 and 5 above were in conformance with the rules of the Michigan Board of Land Surveyors or by a Decree of a Court of Law; established, re-established, monumented, re-monumented, recovered, found as expressed below:

NOTE: Not more than 4 corners, all in the same town and range, may be recorded on this certificate.



A. Description of original monument and accessories and/or subsequent restoration:

(G9) Section corner common to Sections 21-22-27-28. Original corner established by Wells Burt, 1850. The original record states the following: 1) Set cedar post corner of Sections 21, 22, 27, 28. 2) Tamarack 10 N89W 12. 3) Tamarack 12 S30E 25. 4) [East between 21&28] 75.58 Enter swamp C NW&SE. 5) West between 21&28, 39.79 Quarter section post. 6) North between 21&22, 16.00 Leave swamp C SSW and enter pine plains. 7) North 40.00 Quarter Section corner. 8) 80.00 Post corner to sections 15, 18, 21, 22.
(E9) Section corner common to Sections 20-21-29-28. Corner monumented in 1952 by Dean C. DeLaMater from one original BT in fair condition. The 1952 record states: Set 1" pipe with 4" Brass cap, 10" Spruce N72W 12 links, 12" Jack Pine N84E 60 links.

B. Description of corner evidence found and/or method applied in restoring or reestablishing corner:

(G9) Restored and monumented the corner at the original position in accord with the original record as referenced above: 1) not recovered but found point of small stake or picket buried in the muck at the corner position. 2) Recovered tamarack stump remains at record bearing and distance. 3) Recovered tamarack stump remains at record bearing and distance. 4) Checks. 5) 39.831 meas. to a perpetuated original corner. 6) checks. 7) No evidence of original corner or accessories. 8) 80.06 meas. to a perpetuated original corner. Also recovered a 12" Cedar signature tree facing the corner marked to at least 85 years ago (1929) with names R.L. Bird and I.F. Schielder. Old line blazes extend N, S, and W. from the corner. At the position for the corner, as determined from the stake point and bearing trees, placed a 1" I.D. x 38" painted iron pipe capped with a 4" dia. cast aluminum MDNR tablet, appropriately stamped.
(E9) Found and accepted DeLaMater's monument as described, at record bearing and distance from the 1952 NBT spruce, now dead. The J. Pine NBT has been cut. Marked 4 new bearing trees as described below.

C. Description of monument for corner and accessories established to perpetuate locating the position of the corner:

(G9) Set 1" iron pipe with 4" MDNR cap. Blazed, scribed, and set measuring nails in the following new bearing trees:
12" Cedar S10W 18.3' "S28 NBT"
8" Cedar S48E 5.9' "S27 NBT"
10" Cedar N37E 17.9' "S22 NBT"
10" W. Pine N18W 10.2' "S21 NBT"
Center of sig. tree: S40W 11.3'
Placed a 5" cedar post, squared and scribed, adjacent. Set a location poster on 8" J. Pine 872' W. of the cor. on old S trail rd. Bearings magnetic.

(E9) Found 1" pipe with 4" MDNR cap. Blazed, scribed, and set measuring nails in the following new bearing trees:
18" R. Pine N82W 24.0' "S20 NBT"
14" W. Pine S87W 20.4' "S28 NBT"
8" Spruce S78E 24.85' "S29 NBT"
8" W. Pine N78E 38.75' "S21 NBT"
Placed an 8" cedar post, squared and scribed, adjacent. Corner lies 25' south of a trail road, course West-Northeast. Bearings are magnetic.



Surveyor's Michigan License No. 33986 Date 5-10-94