

LAND CORNER RECORDATION CERTIFICATE
Filing Requirement of Act 74, Mich. P.A. 1970

For corners in
Luce

(County)

Located in:

Corner Code #

1. Public Land Survey	T	50N	R	8W	67
	T	50N	R	8W	68
	T		R		
	T		R		
2. Property Controlling in Section	S	21	T	50N R 8W	6
	S		T	R	
3. Miscellaneous Property in Sec.	S		T	R	
	S		T	R	

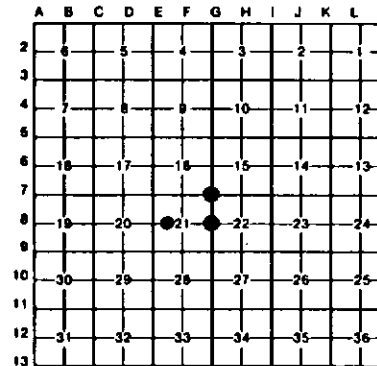
Register of Deeds Stamp & File Number

4. Lot No. _____, Recorded Plat _____
 5. Private Claims _____

8 May 05, 1994
 68 February 24, 1994

I, Stephan J. Szyszkoski, in a field survey on 67 April 28, 1994, do hereby certify that under requirements of P.A. 74, Michigan P.A. of 1970, the corner points mentioned in lines 1 and 2 above were in conformance with regulations and rules therefore as required in the current manual of survey instructions of the United States Department of the Interior, Bureau of Land Management or by a decree of a Court of Law and/or that the corner points mentioned in lines 3, 4 and 5 above were in conformance with the rules of the Michigan Board of Land Surveyors or by a Decree of a Court of Law, established, re-established, monumented, re-monumented, recovered, found as expressed below:

NOTE: Not more than 4 corners, all in the same town and range, may be recorded on this certificate.



A. Description of original monument and accessories and/or subsequent restoration:

- (67) Corner common to Sections 15-16-21-22. Corner re-monumented from one original bearing tree in 1952 by Dean C. DeLaMeter. The 1952 record states: Set 1" pipe with 4" brass cap, 10" J. Pine S03E 62 links, 8" J. Pine N74W 130 links.
 (68) Quarter corner common to Sections 21-22. Corner established in 1850 by Deputy Surveyor Wells Burt as follows: Set Spruce pine post. Bearing trees: Spruce Pine 9 S82W 32, Spruce Pine 7 S65 1/2 E 2.50. Found no subsequent record.
 (8-Sec. 21) West 1/16 corner, Section 21. Corner not established in the original survey. Found no subsequent record.

B. Description of corner evidence found and/or method applied in restoring or reestablishing corner:

- (67) Found and accepted DeLaMeter's monument at record bearing and distance from the 1952 J. Pine NBTs, the SE tree now a stump with lower scribing plain, the NW tree now 10" DBH and in good condition. Set a measuring nail in the remaining NBT and marked 3 new bearing trees as described below.
 (68) Original post and accessories not recovered. Found no evidence of prior monumentation or evidence of use at corner location. Found no acceptable evidence of the position of the original corner. Reestablished the corner midway and on a straight line between perpetuated original section corners 2841.98' North and South, being the proportionate position. Monumented this position with a 1" I.D. x 3/8" painted iron pipe capped with a 4" dia. cast aluminum MDNR tablet, appropriately stamped, and placed a 6" squared cedar post adjacent.
 (8-Sec. 21) Found no evidence of prior monumentation at the corner position. Established the corner midway and on a straight line between Quarter corner 1313.46' West and Center of Section 21 1313.46' East. The Center being the unmonumented intersection of straight lines connecting opposite 1/4 corners. Monumented the corner position with a 1" I.D. x 3/8" iron pipe capped with a 4" dia. cast aluminum MDNR tablet, appropriately stamped.

C. Description of monument for corner and accessories established to perpetuate locating the position of the corner:

- | | | |
|---|--|--|
| (67) Found a 1" pipe with 4" Brass cap. Blazed, scribed, and set measuring nails in the following new bearing trees:
5" J. Pine N89W 4.5' "S18 NBT"
8" J. Pine N27E 2.7' "S15 NBT"
6" J. Pine S10E 7.2' "S22 NBT"
The 1952 NBT:
10" J. Pine N74W 85.9' re-mrkd "S18"
Set a 5" cedar post, squared and scribed, adjacent. Bearings are magnetic. | (68) Set 1" pipe with 4" MDNR cap. Blazed, scribed, and set measuring nails in the following new bearing trees:
12" J. Pine S36E 18.7' "1/4S NBT"
10" J. Pine North 30.95' "1/4S NBT"
8" J. Pine N40W 15.25' "1/4S NBT"
8" J. Pine S82W 24.55' "1/4S NBT"
Placed a location poster on a 5" J. Pine 40' S of the corner at E-W trail. Bearings are magnetic. | (8) Set 1" iron pipe with 4" MDNR cap. Blazed, scribed and set measuring nails in the following bearing trees:
8" R. Pine S70E 17.5' "W1/16 BT"
10" J. Pine S18W 14.3' "W1/16 BT"
8" J. Pine N89W 12.5' "W1/16 BT"
10" J. Pine N34W 32.9' "W1/16 BT"
Placed an 3" W. Pine post, squared and scribed, adjacent. Bearings magnetic. |
|---|--|--|

Signed by Stephan J. Szyszkoski Date 5-10-94
 Surveyor's Michigan License No. 33986

