

#37

LAND CORNER RECORDATION CERTIFICATE
Filing Requirement of Act 74, Mich. P.A. 1970

For corners in
Luce

(County)	Located In:	Corner Code #
1. Public Land Survey	T 50N R 8W	E7
	T _____ R _____	_____
	T _____ R _____	_____
	T _____ R _____	_____
2. Property Controlling in Section	S 21 T 50N R 8W	15
	S 21 T 50N R 8W	16
3. Miscellaneous Property in Sec.	S _____ T _____ R _____	_____
	S _____ T _____ R _____	_____

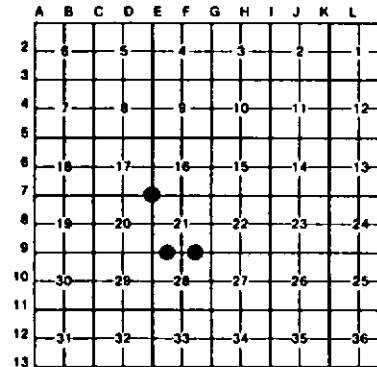
Register of Deeds Stamp & File Number

4. Lot No. _____, Recorded Plat _____
5. Private Claims _____

16 February 24, 1994
15 May 09, 1994

I, Stephan J. Szyszkoski, in a field survey on E7 May 09, 1994, 19 _____, do hereby certify that under requirements of P.A. 74, Michigan P.A. of 1970, the corner points mentioned in lines 1 and 2 above were in conformance with regulations and rules therefore as required in the current manual of survey instructions of the United States Department of the Interior, Bureau of Land Management or by a decree of a Court of Law and/or that the corner points mentioned in lines 3, 4 and 5 above were in conformance with the rules of the Michigan Board of Land Surveyors or by a Decree of a Court of Law; established, re-established, monumented, re-monumented, recovered, found as expressed below:

NOTE: Not more than 4 corners, all in the same town and range, may be recorded on this certificate.



A. Description of original monument and accessories and/or subsequent restoration:

- (E7) Corner common to Sections 16-17-20-21. Corner re-monumented from two original BTs, both in fair condition in 1952 by Dean C. DeLaWater. The 1952 record states: Set 1" pipe with 4" Brass cap, 8" W. Pine S46E 20 links, 9" W. Pine S03W 38 links.
(15-Sec. 21) West 1/16 corner between Sections 21-26. Corner not established in the original survey. Found no subsequent record.
(16-Sec. 21) East 1/16 corner between Sections 21-26. Corner not established in the original survey. Found no subsequent record.

B. Description of corner evidence found and/or method applied in restoring or reestablishing corner:

- (E7) Found and accepted DeLaWater's monument at record bearing and distance from his 1952 W. Pine NBTs, now both 14" in diameter. Placed measuring nails with tags in these NBTs and marked 3 additional trees as described below.
(15-Sec. 21) Found no evidence of prior monumentation at the corner position. Established the corner midway and on a straight line between perpetuated original corners 1312.39' East and West. Monumented the corner position with a 1" I.D.x36" iron pipe capped with a 4" dia. cast aluminum MDNR tablet, appropriately stamped.
(16-Sec. 21) Found no evidence of prior monumentation at the corner position. Established the corner midway and on a straight line between quarter corner 1314.42' West and Section corner 1314.42' East. Monumented the corner position with a 1" I.D.x36" painted iron pipe capped with a 4" dia. cast aluminum MDNR tablet, appropriately stamped.

C. Description of monument for corner and accessories established to perpetuate locating the position of the corner:

- | | | |
|--|---|---|
| <p>(E7) Found 1" pipe with 4" Brass cap. Blazed, scribed, and set measuring nails in the following new bearing trees:
14" W. Pine N23E 21.5' "S16 NBT"
10" W. Pine S78E 16.55' "S21 NBT"
12" R. Pine S86W 27.9' "S20 NBT"
The 1952 bearing trees:
14" W. Pine S46E 13.8' "S21"
14" W. Pine S03W 24.0' "S20"
Set a location poster on a 6" spruce 166' west of the corner at a N-S trail.</p> | <p>(15) Set 1" iron pipe with 4" MDNR cap. Blazed, scribed, and set measuring nails in the following bearing trees:
10" R. Pine S33E 12.1' "W1/16 BT"
12" R. Pine N58E 13.1' "W1/16 BT"
6" J. Pine N15W 36.45' "W1/16 BT"
10" J. Pine N30E 39.2' "W1/16 BT"
Placed on 8" cedar post, squared and scribed, adjacent. Placed a location poster on an 8" J. Pine, 133' north of the corner along a NE-SW trail.
Bearings are magnetic.</p> | <p>(16) Set 1" pipe with 4" MDNR cap. Blazed, scribed, and set measuring nails in the following bearing trees:
12" W. Pine S45E 34.2' "E1/16 BT"
10" R. Pine N61W 23.35' "E1/16 BT"
8" J. Pine N03W 8.65' "E1/16 BT"
10" J. Pine N75E 13.05' "E1/16 BT"
Placed a 5" squared W. Pine post adjacent. Bearings are magnetic.</p> |
|--|---|---|

Signed by Stephan J. Szyszkoski Date 5-10-94
Surveyor's Michigan License No. 33986

