

SURVEY & REMONUMENTATION

OCT 21 1999

FILED

9-

SECTION

LAND CORNER RECORDATION CERTIFICATE
Filing Requirement of Act 74, Mich. P.A. 1970

For corners in

LIVINGSTON
(County)

Located In: HAMBURG

Corner Code //

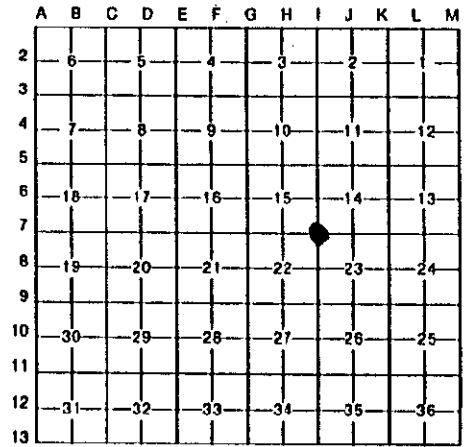
1998 DEC 11 P 12:44

NANCY HAVILAND
REGISTER OF DEEDS
LIVINGSTON COUNTY, MI.
48843

L.S.C. #987m

Register of Deeds Stamp & File Number

- 1. Public Land Survey T 1N R 5E 1 - 7
- 2. Property Controlling in Section S T R
- 3. Miscellaneous Property in Sec. S 14/15 T 1N R 5E 007
S 15/22 T 1N R 5E 008 ✓
- 4. Lot No. , Recorded Plat
- 5. Private Claims



I, BRYAN BOSS, in a field survey on OCTOBER 2, 19 98, do hereby certify that under requirements of P.A. 74, Michigan P.A. of 1970, the corner points mentioned in lines 1 and 2 above were in conformance with regulations and rules therefore as required in the current manual of survey instructions of the United States Department of the Interior, Bureau of Land Management or by a decree of a Court of Law and/or that the corner points mentioned in lines 3, 4 and 5 above were in conformance with the rules of the Michigan Board of Land Surveyors or by a Decree of a Court of Law; established, re-established, monumented, re-monumented, recovered, found as expressed below:

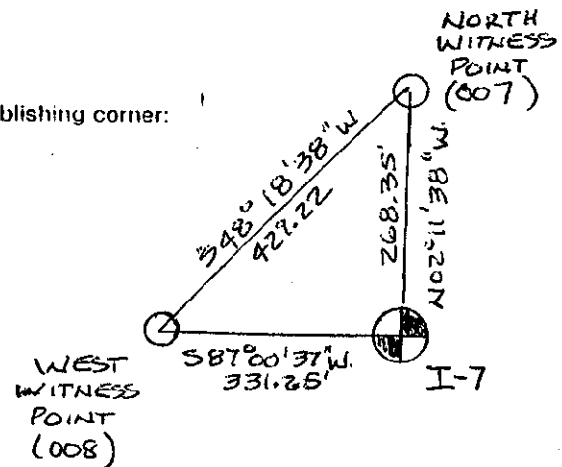
NOTE: Not more than 4 corners, all in the same town and range, may be recorded on this certificate.

A. Description of original monument and accessories and/or subsequent restoration:

NORTH BETWEEN SECTIONS 22 & 23
69 CHAINS TO LAKE.
80 CHAINS, SECTION CORNER IN LAKE

B. Description of corner evidence found and/or method applied in restoring or reestablishing corner:

SECTION CORNER FALLS IN GILL LAKE.
SET WITNESS POINT 331.25 WEST ALONG THE SECTION LINE AT A FOUND IRON AT THE SOUTHEAST CORNER OF "OUT LOT C".
SET WITNESS POINT 268.35 FEET NORTH ALONG THE SECTION LINE AT THE INTERSECTION WITH THE SOUTH R.O.W. AT WINANS LAKE ROAD.



P.A. 345 1999, APPROVED BY LIVINGSTON COUNTY
PEER GROUP ON 9-30-98, CO. REP. JED

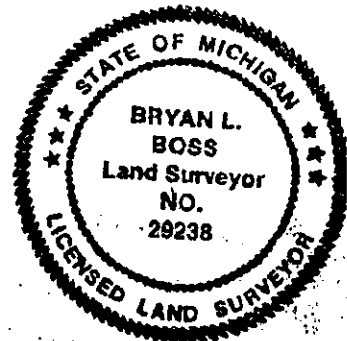
C. Description of monument for corner and accessories established to perpetuate locating the position of the corner:

WEST WITNESS POINT (008)
SET 1 1/2" X 3/8" PIPE WITH BRASS CAP
STAMPED "LIVINGSTON CO. REMONUMENTATION WITNESS". 6 FEET NORTH OF SHORELINE

WEST 1.92 SET NAIL & TAG S/S 6' COTTONWOOD
N45W 19.58 SET NAIL & TAG NE/S 24" COTTONWOOD
N30E 14.17 SET NAIL & TAG NW/S 24" COTTONWOOD
S80E 4.92 SET NAIL & TAG N/S 6" TWIN IRONWOOD
N87°E 331.25 TO COR. I-7

NORTH WITNESS POINT (007)
SET 1 1/2" X 3/8" PIPE WITH BRASS CAP
STAMPED "LIVINGSTON CO. REMONUMENTATION WITNESS". 23.5' SOUTH OF CL EAST WINANS LAKE ROAD AND 130' NORTH OF THE EDGE OF GILL LAKE

WEST 17.96 SET REMON NAIL AND TAG S/S P. POLE
S45W 70.27 SE CORNER CONC FONDATION GARAGE #5988
NORTH 59.37 SET REMON E/S 10" MAPLE
EAST 33.18 SET REMON NAIL AND TAG N/S 12" HACKBERRY
S02°E 268.35' TO COR. I-7



Signed by [Signature]
Surveyor's Michigan License No. 29238

Date DEC. 10, 1998