

STATE OF MICHIGAN  
DEPARTMENT  
OF  
NATURAL RESOURCES

LAND CORNER RECORD

1-1 LIVINGSTON COUNTY

T 1N R 6E

DESCRIPTION OF CORNER

NORTHEAST CORNER SEC. 3

CORNER MONUMENT

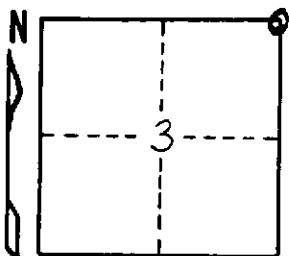
CONCRETE MONUMENT

DATE MONUMENT ~~REMOVED~~ WITNESSED

MARCH 28, 1969

WITNESSES TO CORNER.....

NORTH 15.1' 12" TAMARACH PK NAIL + BRASS TAG



N35°W 24.8' 8" TAMARACH PK NAIL + BRASS TAG

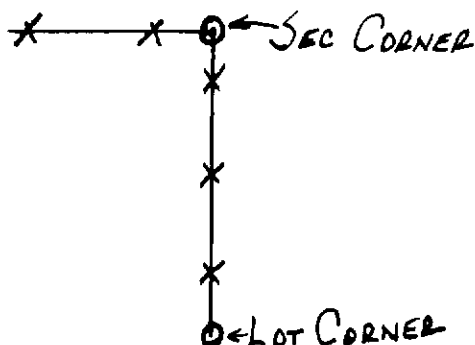
SOUTH 185' CONC. MONUMENT - LOT CORNER

AND

CIRCLE CORNER REGISTERED

DESCRIPTION IN DETAIL AS TO HOW CORNER WAS LOCATED AND IDENTIFIED OR RESTORED.

8" TAMARACH TREE  
12" TAMARACH TREE



SURVEYOR'S SEAL

GRAND RIVER

SIGNED

Old U.S. 16

*[Signature]*

DATE

March 1969

DISTRIBUTION:

REGISTERED LAND SURVEYOR

County Courthouse  
Area Forester (Regions I & II)  
District or Region Surveyor  
Forestry Div., Lansing