

LAND CORNER RECORDATION CERTIFICATE
Filing Requirement of Act 74, Mich. P.A. 1970

For corners in

Livingston
(County)

Located In:

Corner Code ==

- | | | |
|------------------------------------|--------------------------------------|------------|
| 1. Public Land Survey | <u>T</u> <u>N</u> <u>R</u> <u>4E</u> | <u>L-7</u> |
| | T R | |
| | T R | |
| | T R | |
| 2. Property Controlling in Section | S T R | |
| | S T R | |
| 3. Miscellaneous Property in Sec. | S T R | |
| | S T R | |

SEP 1 3 28 PM '94
 HANCOCK HAYLAND
 REGISTER OF DEEDS
 LIVINGSTON COUNTY, MI
 48843

FILED

L.S.C.# 234m
 Register of Deeds Stamp & File Number

4. Lot No. _____, Recorded Plat _____
5. Private Claims _____

I, Charles E Garlock, in a field survey on August 18, 19 94, do hereby certify that under requirements of P.A. 74, Michigan P.A. of 1970, the corner points mentioned in lines 1 and 2 above were in conformance with regulations and rules therefore as required in the current manual of survey instructions of the United States Department of the Interior, Bureau of Land Management or by a decree of a Court of Law and/or that the corner points mentioned in lines 3, 4 and 5 above were in conformance with the rules of the Michigan Board of Land Surveyors or by a Decree of a Court of Law; established, re-established, monumented, re-monumented, recovered, found as expressed below:

A	B	C	D	E	F	G	H	I	J	K	L	M
2	6	5	4	3	2	1						
3												
4	7	8	9	10	11	12						
5												
6	18	17	16	15	14	13						
7												
8	19	20	21	22	23	24						
9												
10	30	29	28	27	26	25						
11												
12	31	32	33	34	35	36						
13												

NOTE: Not more than 4 corners, all in the same town and range, may be recorded on this certificate.

- A. Description of original monument and accessories and/or subsequent restoration:
 GLO survey date: April 15, 1825
 GLO witnessess: W025-N17W-0.33 ch
W025-S34W-0.67 ch

- See additional data on rear of sheet
- B. Description of corner evidence found and/or method applied in restoring or reestablishing corner:
Found 1/2' I. rod South of centerline of Road

**SURVEY &
 REMONUMENTATION**

SEP 26 1994

COMMISSION

- C. Description of monument for corner and accessories established to perpetuate locating the position of the corner:
L-7: North 1/4 cor. Sec. 24, T2N-R4E, Marion Twp. Liv. Co. MI., set 1 1/4" X 36" I. Pipe with breakaway top and Liv. Co. Remon brass cap on top at -0.5'
North-90.84'-sp & tag E/s 46" W Oak
N60E-72.60'-sp & tag S/s U Pole
S45E-54.26'-ctr. 6" Spruce
South-41.35'-ctr. 3" Spruce
North-4'±-ctr. of Davis Rd.



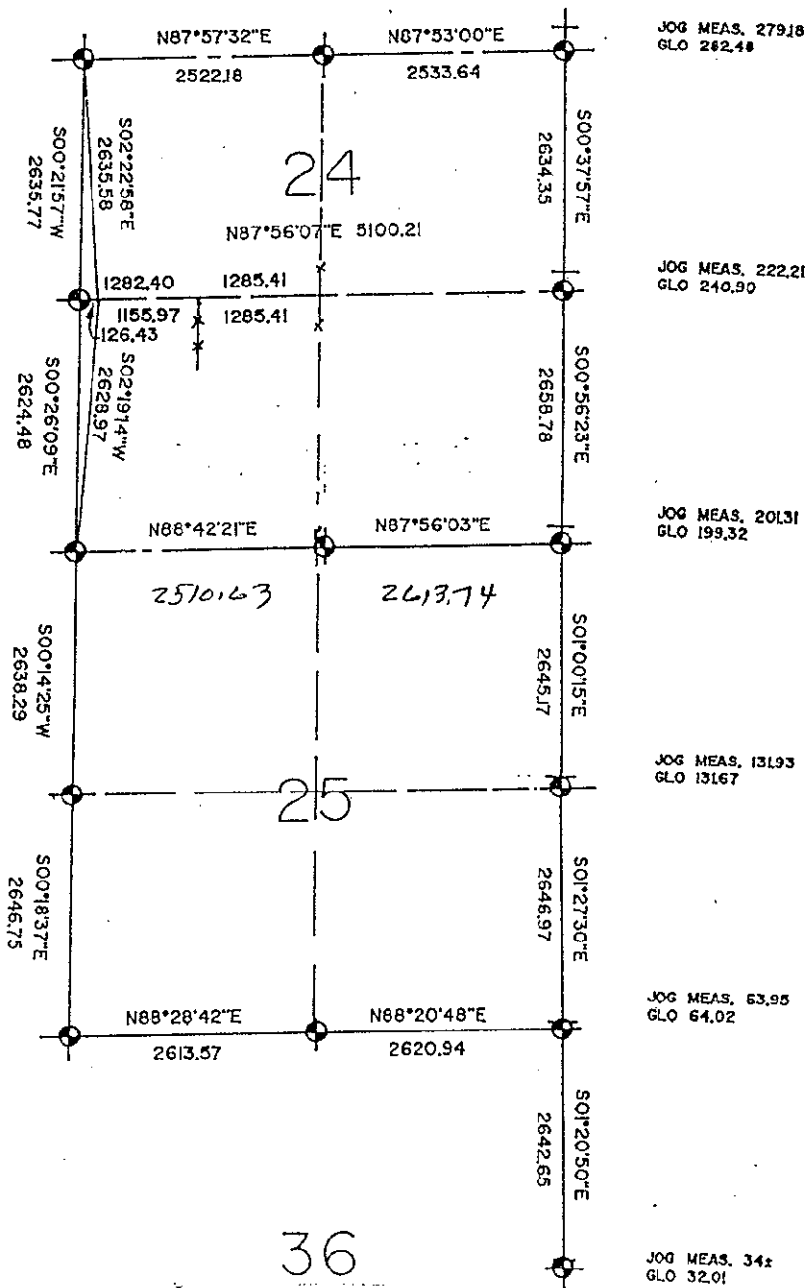
Signed by Charles E Garlock Date August 19, 1994

Surveyor's Michigan License No. 14762

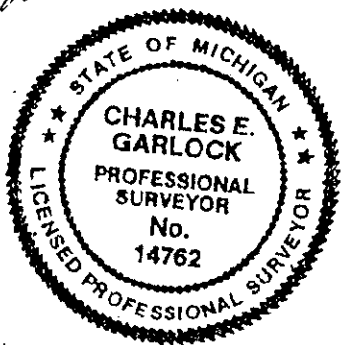
CORNER SUMMARY

L-7 N 1/4 Cor. Sec. 24, Marion Twp., Livingston Co., MI

GLO notes dated April 15, 1825 by S. Sibley, D.S.
 Earliest known recovery of a corner was in 1967 by myself when I found a 1/2" Iron Rod in line with an old fence line to the North and about 5' South of the centerline of Davis Rd. Since that time, J. Albright, P.L. Benton, Detroit Edison and Desine Engineering have used the same point as per the witnesses on file. Measures by myself, J. Albright and Desine West to the NW Corner vary by about 0.42': 2522.35' = Albright, 2521.76' = Desine, and 2522.18' = myself. To the East they vary 0.38': 2533.84' = Albright, 2533.46' = Desine and 2533.64' = myself. The Corner is in a gravel road with a woods on the South side of the road and a few trees along the North edge.
 Found no other irons in the area.



Charles E. Garlock



2N-4E L-7 4