

FILED

AUG 8 12 56 PM '94

LAND CORNER RECORDATION CERTIFICATE  
Filing Requirement of Act 74, Mich. P.A. 1970

HANCOCK HAY  
REGISTER OF DEEDS  
LIVINGSTON COUNTY, MI  
48843

For corners in

Livingston  
(County)

Located In:

Corner Code #

- 1. Public Land Survey T 2N R 4E L-11  
T \_\_\_\_\_ R \_\_\_\_\_  
T \_\_\_\_\_ R \_\_\_\_\_  
T \_\_\_\_\_ R \_\_\_\_\_
- 2. Property Controlling S \_\_\_\_\_ T \_\_\_\_\_ R \_\_\_\_\_  
in Section S \_\_\_\_\_ T \_\_\_\_\_ R \_\_\_\_\_
- 3. Miscellaneous S \_\_\_\_\_ T \_\_\_\_\_ R \_\_\_\_\_  
Property in Sec. S \_\_\_\_\_ T \_\_\_\_\_ R \_\_\_\_\_

L.S.C.#202M

Register of Deeds Stamp & File Number

- 4. Lot No. \_\_\_\_\_, Recorded Plat \_\_\_\_\_
- 5. Private Claims \_\_\_\_\_

	A	B	C	D	E	F	G	H	I	J	K	L	M
2	6	5	4	3	2	1							
3													
4	7	8	9	10	11	12							
5													
6	18	17	16	15	14	13							
7													
8	19	20	21	22	23	24							
9													
10	30	29	28	27	26	25							
11													
12	31	32	33	34	35	36							
13													

I, Charles E Garlock, in a field survey on June 7, 1994

do hereby certify that under requirements of P.A. 74, Michigan P.A. of 1970, the corner points mentioned in lines 1 and 2 above were in conformance with regulations and rules therefore as required in the current manual of survey instructions of the United States Department of the Interior, Bureau of Land Management or by a decree of a Court of Law and/or that the corner points mentioned in lines 3, 4 and 5 above were in conformance with the rules of the Michigan Board of Land Surveyors or by a Decree of a Court of Law; established, re-established, monumented, re-monumented, recovered, found as expressed below:

NOTE: Not more than 4 corners, all in the same town and range, may be recorded on this certificate.

- A. Description of original monument and accessories and/or subsequent restoration:  
GLO survey date: April 15, 1825 by S Sibley  
GLO witness: W010-S6W-0.72 ch  
W0 10-N85E-0.23 ch

See additional data on rear of sheet

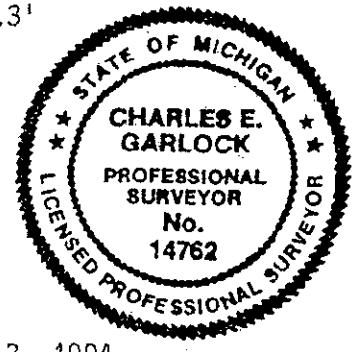
- B. Description of corner evidence found and/or method applied in restoring or reestablishing corner:  
Found 1/2" I. rod in center of old corner post hole rung with stones and remains of fence lines to North, East and West.

SURVEY &  
REMONUMENTATION

SEP 26 1994

COMMISSION

- Description of monument for corner and accessories established to perpetuate locating the position of the corner:  
L-11: S 1/4 cor. Sec. 25, T2N-R4E, Marion Twp., Liv. Co. MI., reset 1/2" I. Rod with 1 1/4" X 36" I. Pipe with Liv. Co. REmon. brass cap on top, at -0.3'  
N10E-21.89'-sp & tag W/s 14" Oak  
S85E-41.37'-sp & tag S/s 20" oak  
S85W-50.52'-sp & tag S/s 14" Hickory  
S30W-111.43'-sp & tag E/s 7" Ash  
S15E-21.07'-nearest edge backside of concrete curb



Signed by Charles E. Garlock

Date August 3, 1994

Surveyor's Michigan License No. 14762

P.A. 345 1990, APPROVED BY LIVINGSTON COUNTY

PEER GROUP ON 18 May 94 CO. REP R.R.S.

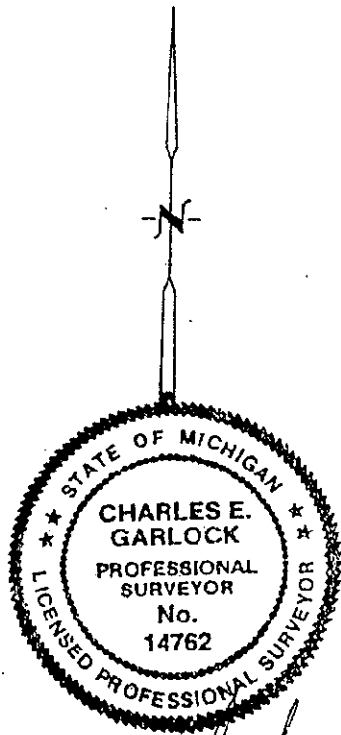
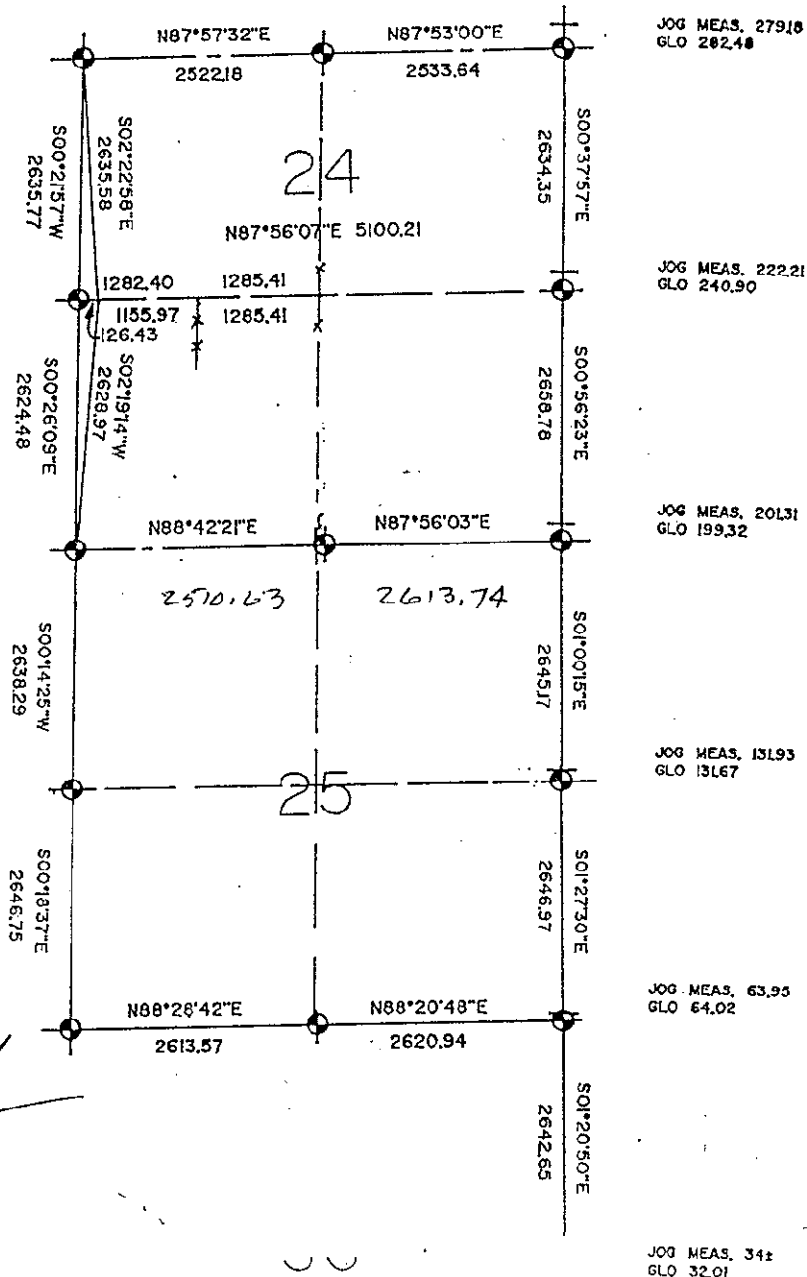
CORNER SUMMARY

L-11 N 1/4 Cor. Sec.36, Marion Twp., Livingston Co., MI

GLO dated April 15, 1825 by S. Sibley, D.S.

Earliest known witnesses by Co. Surveyor is 1838 by Fairchild and is gone. Next M. Bullock 1879 witnessed said Corner and this witness tree is gone. 1981 P.L. Benton used an existing old Corner post with fence lines running North, East and West. Since that time Boss Engineering has continued to use the same corner. Corner has been established by occupation and measures East and West are: N88-20-48E 2620.94' to NE Corner and S88-28-42W 2613.57' to NW Corner. Area is wooded with a recent cul-de-sac constructed to the South.

Found no other irons in the area.



*Charles E. Garlock*

24-4E L-11 4.