

**SURVEY & REMONUMENTATION**

**FILED**

**OCT 25 1993**

**Oct 18 9 18 AM '93**

**LAND CORNER RECORDATION CERTIFICATE**  
**Filing Requirement of Act 74, Mich. P.A. 1970**

For copies of **COMMISSION**  
Livingston  
(County)

NANCY HAVILAND  
 REGISTER OF DEEDS  
 LIVINGSTON COUNTY, MI  
 48843

1. Public Land Survey	T <u>2N</u> R <u>5E</u>	<u>A-1</u>
	T _____ R _____	_____
	T _____ R _____	_____
	T _____ R _____	_____
2. Property Controlling in Section	S _____ T _____ R _____	_____
	S _____ T _____ R _____	_____
3. Miscellaneous Property in Sec.	S _____ T _____ R _____	_____
	S _____ T _____ R _____	_____
4. Lot No. _____, Recorded Plat _____		
5. Private Claims _____		

C.L.S.# 20m  
 Register of Deeds Stamp & File Number

I, Charles E Garlock in a field survey on August 24, 19 93, do hereby certify that under requirements of P.A. 74, Michigan P.A. of 1970, the corner points mentioned in lines 1 and 2 above were in conformance with regulations and rules therefore as required in the current manual of survey instructions of the United States Department of the Interior, Bureau of Land Management or by a decree of a Court of Law and/or that the corner points mentioned in lines 3, 4 and 5 above were in conformance with the rules of the Michigan Board of Land Surveyors or by a Decree of a Court of Law; established, re-established, monumented, re-monumented, recovered, found as expressed below:

	A	B	C	D	E	F	G	H	I	J	K	L	M
2	6	5	4	3	2	1							
3													
4	7	8	9	10	11	12							
5													
6	18	17	16	15	14	13							
7													
8	19	20	21	22	23	24							
9													
10	30	29	28	27	26	25							
11													
12	31	32	33	34	35	36							
13													

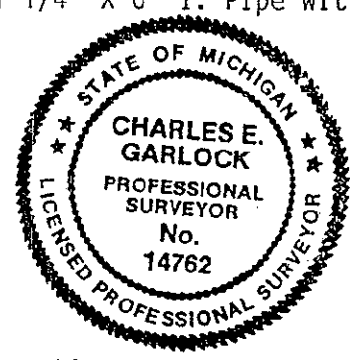
**NOTE: Not more than 4 corners, all in the same town and range, may be recorded on this certificate.**

A. Description of original monument and accessories and/or subsequent restoration:  
 GLO notes dated: May 14, 1823  
 GLO witnesses: W0 32-S87½E-40 lks  
 W0 8-N87W-60 lks  
 Additional historical data on back of sheet

1993  
 COMMISSION

B. Description of corner evidence found and/or method applied in restoring or reestablishing corner:  
 Found Monument box (-0.5') and 1½" I. Pipe (-1.2') set by MDOT

C. Description of monument for corner and accessories established to perpetuate locating the position of the corner:  
 A-1, NW corner Section 6 T2N-R5E, Genoa Twp., raised with 1 1/4" X 6" I. Pipe with Liv. Co. Mon. Cor. brass cap on top.  
 S10E-105.65'-ctr. large DE pole  
 S70W-36.36'-spike N/s 15" Box Elder w/MDOT taf  
 S30E-104.92'-SW corner Bldg. # 101  
 S65E-69.15'-NW corner Bldg. # 101  
 N85E-40.65'-spike N/s 18" Maple  
 East-3.5'-ctr. Lucy Road.



Approved by Liv. Co. Mon. Peer Group, August 18, 1993

Signed by Charles E. Garlock

Date October 16, 1993

Surveyor's Michigan License No. 14762

10/20/93

"Be Sure of Your Ground"

CHARLES E. GARLOCK  
PROFESSIONAL SURVEYOR  
840 EAST DAVIS ROAD  
HOWELL, MICHIGAN 48843  
OFFICE: (517) 546-3340  
FAX: 517 546-2941

July 27, 1993

A-1: NW corner Section 6 Genoa Twp. Liv. Co. MI

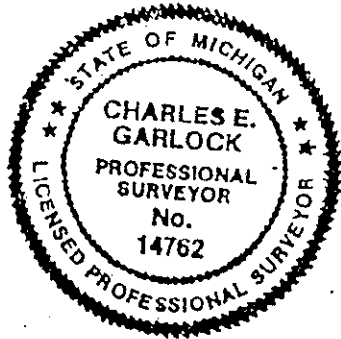
Found one Act 74 recorded by MDOT in 1972 when they replaced 3/8" iron pipe inside a larger iron pipe in center of Lucy Rd. with a 1 1/2" iron pipe in a mon. box 3 inches below surface. Oldest known witness is to a 1 1/2" Gas Pipe by G.H. Dunning in 1920; found again in 1931 by C.W. Gordon, again by C.W. Gordon in 1945 and 1946 also with 3/8" iron pipe inside the bigger iron pipe and labeled it as a common township Corner. In 1971 I found the 3/8" iron pipe inside the larger gas pipe. Many surveys have been tied to this Corner by surveyors listed as:

- L.A. Smith 1935 (Later Dean of Engr. at MSU)
- C.W. Gordon 1935, 42, 45, 46, 48
- L.W. Munsell 1954, 55, 57
- Boss Engineering 1972, 78, 88
- P.L. Benton 1972, 79
- C.E. Garlock 1971, 73, 76, 82, 85, 88
- MDOT 1972

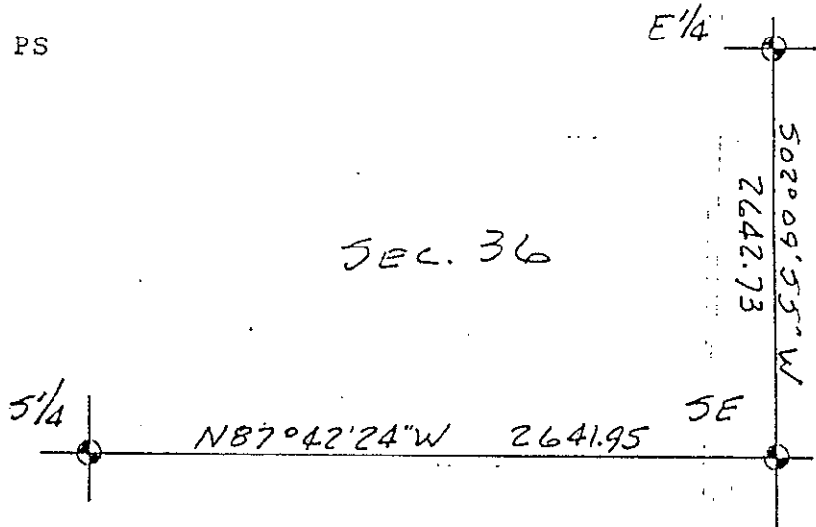
The above surveys are located in Howell, Genoa and Marion Townships. Witnesses for this common Corner are also found in the above three Townships; many are the same distances to the same witness points. It is odd that I found nothing in Oceola Township. The mon. box and iron pipe is now located about 1 foot below the gravelled surface of Lucy Rd. with trees lining the West side of the Road but fairly open to the East.

*Charles E. Garlock*

Charles E. Garlock, PS



SEC. 36



BK 16804

SUCCESSOR TO: JUNE 1993

- MILES W. BULLOCK, L.S. (1844 TO 1926)
- CLAY W. GORDON, RLS (1883 TO 1970)
- GRANT H DUNNING, P.E. (1865 TO 1928)
- LYLE W. MUNSELL, RLS (1904 TO 1987)

2N 5E, A-1