

1993

DEC 29 11 24 AM '93

COMMISSION

LAND CORNER RECORDATION CERTIFICATE

Filing Requirement of Act 74, Mich. P.A. 1970, NANCY HAVILAND REGISTER OF DEEDS LIVINGSTON COUNTY, MI 48843

For corners in

Livingston	Located In:	Corner Code #
1. Public Land Survey	T 2N R 5E	J-13
	T R	
	T R	
	T R	
2. Property Controlling in Section	S T R	
	S T R	
3. Miscellaneous Property in Sec.	S T R	
	S T R	

L. S. C. #165m Register of Deeds Stamp & File Number

4. Lot No. , Recorded Plat
5. Private Claims

A	B	C	D	E	F	G	H	I	J	K	L	M
2	6	5	4	3	2	1						
3												
4	7	8	9	10	11	12						
5												
6	18	17	16	15	14	13						
7												
8	19	20	21	22	23	24						
9												
10	30	29	28	27	26	25						
11												
12	31	32	33	34	35	36						
13												

I, Bryan Boss, in a field survey on December 22, 1993, do hereby certify that under requirements of P.A. 74, Michigan P.A. of 1970, the corner points mentioned in lines 1 and 2 above were in conformance with regulations and rules therefore as required in the current manual of survey instructions of the United States Department of the Interior, Bureau of Land Management or by a decree of a Court of Law and/or that the corner points mentioned in lines 3, 4 and 5 above were in conformance with the rules of the Michigan Board of Land Surveyors or by a Decree of a Court of Law; established, re-established, monumented, re-monumented, recovered, found as expressed below:

NOTE: Not more than 4 corners, all in the same town and range, may be recorded on this certificate.

A. Description of original monument and accessories and/or subsequent restoration:

Surveyed 1882 M. W. Bullock
Surveyed 1915 Grant Dunning
N & S 1/4 Line Established in 1866 by E. N. Fairchild

B. Description of corner evidence found and/or method applied in restoring or reestablishing corner:

Found 1 1/2" Pipe 2 Feet Above Grade in Water
Corner reset by Computations of Section 35
New Corner 0.58 North Centerline 0.12 West of 1 1/2" Pipe

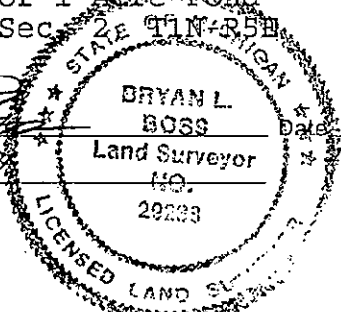
C. Description of monument for corner and accessories established to perpetuate locating the position of the corner:

Set 1 1/4" x 6" Iron Pipe with Brass Cap
Livingston Co. Mon. Corner

West 47.48' Spike S/Side 20" Tamarack
S10°W 38.98' Spike W/Side 10" Tamarack
S62°E 6.72' Spike S/Side 20" Tamarack
S60°E 34.85' Spike S/Side 12" Tamarack
East 70 feet± West Edge of 1 Acre Pond
West 19.77 N 1/4 Corner Sec. 2E 11N R5E

Approved by Livingston Co. Monumentation Peer Group on November 6, 1993

Signed by [Signature] 29238
Surveyor's Michigan License No.



December 28, 1993

BOSS ENGINEERING
ENGINEERS & SURVEYORS

November 5, 1993

SUMMARY

J-13 South 1/4 Corner, Section 35, Genoa Township,
Livingston County, Michigan

December 1976, Don Ross, Job No. 76-906 witnesses agree with
Pat Benton 1977 recorded survey no. 1635 amended.

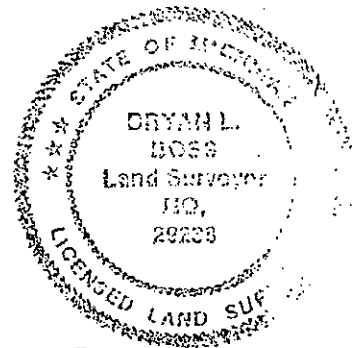
In 1992 Hughes found same 1 1/2" diameter pipe and set
additional witnesses.

Darrell Hughes also set J-1, N 1/4 Corner of Section 2,
Hamburg Township 19.89 feet West.

In 1993, Boss Job no. 92474-A measured and recorded Ross
line North to center of Section.

In 1991-92 Darrell Hughes Amended "Cunninghams Subdivision
No. 1".

file: J-13



A handwritten signature in cursive script, appearing to read "Bryan L. Boss".