

SURVEY & REMONUMENTATION

FEB 26 2001

SECTION

LAND CORNER RECORDATION CERTIFICATE
Filing Requirement of Act 74, Mich. P.A. 1970

FILED

For corners in

LIVINGSTON

(County)

Located in: GENOA Corner Code #

9

2000 NOV 29 10 49 50

NANCY HAVILAND
REGISTER OF DEEDS
LIVINGSTON COUNTY, MI.
48843

- 1. Public Land Survey (T 2N R 5E G-3)
T R
T R
T R
- 2. Property Controlling in Section S T R
S T R
- 3. Miscellaneous Property in Sec. S 21 T 2N R 5E 006
S 21 T 2N R 5E 007 ✓

LSC #1391m

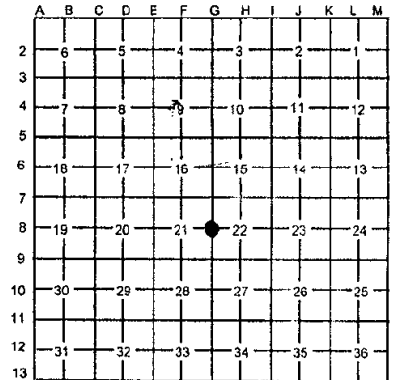
Register of Deeds Stamp and File Number

- 4. Lot No. _____, Recorded Plat _____
- 5. Private Claims _____

I, Bryan L. Boss, in a field survey on October 31, 2000

do hereby certify that under requirements of P.A. 74, Michigan P.A. of 1970, the corner points mentioned in lines 1 and 2 above were in conformance with regulations and rules therefor as required in the current manual of survey instructions of the United States Department of the Interior, Bureau of Land Management or by a decree of a Court of Law and/or that the corner points mentioned in lines 3, 4 and 5 above were in conformance with the rules of the Michigan Board of Land Surveyors or by a Decree of a Court of Law; established, re-established, monumented, re-monumented, recovered, found as expressed below.

NOTE: Not more than 4 corners, all in the same town and range, may be recorded on this certificate.



A. Description of original monument and accessories and/or subsequent restoration:

Corner not in 1823 by S. Sibley, Deputy Surveyor. He stated that the corner was in a lake, 1 chain south of the north edge of lake.

B. Description of corner evidence found and/or method applied in restoring or reestablishing corner:

The location for this corner was established on a straight line between corners G-7 and G-9 as shown on a 1970 survey by Atwell-Hicks and 1990 survey by Boss Engineering. The corner was established at a distance of 2700.77 from Corner G-9 and 2698.44 feet from Corner G-7. This location is in Crooked Lake. Witness corners were set at locations North and West of the Corner to perpetuate the location.

The North Witness Corner was set on the line between G-8 and G-7, N02°01'49" W, 326.85 feet from G-8. This point is also on the intermediate traverse line for "NORTH SHORE COMMONS" as recorded in L. 2014, Pg 917-924 L.C.R.
The West Witness Corner is on the East-West 1/4 line of Section 22, S88°21'50" W, 1323.64 feet from Corner G-8. This point was previously marked by a 1/2" iron rod shown on a Boss Engineering survey, Job #90086. The North Witness Corner lies N74°28'15" E, 1361.21 feet from the West Witness Corner

C. Description of monument for corner and accessories established to perpetuate locating the position of the corner:

North Witness Corner (006)
Set 1 1/4" x 36" Pipe & Brass cap stamped "Livingston County Remonumentation Witness"
N45°E 4.83' Remon Nail & Tag S/S 18" Oak
S70°W 66.39' Remon Nail & Tag N/S 18" Oak
N75°W 9.94' Remon Nail & Tag S/S 12" Twin Cherry
N45°W 124.80' Fd. 1/2" Iron at SW Cor. Lot 62

West Witness Corner (007)
Set 1 1/4" x 36" Pipe & Brass cap stamped "Livingston County Remonumentation Witness" in place of 1/2" iron rod
N5°E 16.65' Remon Nail & Tag W/S 28" Oak
N75°E 32.40' Remon Nail & Tag NW/S 22" Oak
South 7.75' Remon Nail & Tag W/S 10" Aspen
N80°W 11.65' Remon Nail & Tag N/S 4" Oak

PA. 345 1990, APPROVED BY LIVINGSTON COUNTY

PEER GROUP ON 45-2000 CO. REP JED



Signed by *Bryan L. Boss*

Date NOV 15, 2000

Surveyor's Michigan License No. 29238