

LAND CORNER RECORDATION CERTIFICATE
Filing Requirement of Act 74, Mich. P.A. 1970

For corners in

Livingston
 (County)

Located In: 2N 6E K-11

1. Public Land Survey	T	R	
	T	R	
	T	R	<i>Seg. 2. pm</i>
	T	R	
2. Property Controlling in Section	S	T	R
	S	T	R
3. Miscellaneous Property in Sec.	S	T	R
	S	T	R

JUN 14 8 32 AM '94
 NANCY HAVLAND
 REGISTER OF DEEDS
 LIVINGSTON COUNTY, MI
 48843

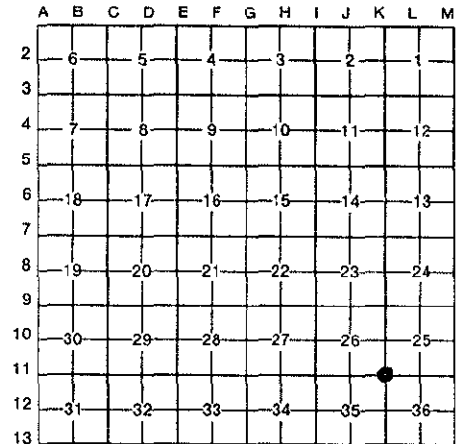
FILED

L.S.C.# 197m
 Register of Deeds Stamp & File Number

4. Lot No. _____, Recorded Plat _____
 5. Private Claims _____

Bryan Boss December 20 93

I, _____, in a field survey on _____, 19____, do hereby certify that under requirements of P.A. 74, Michigan P.A. of 1970, the corner points mentioned in lines 1 and 2 above were in conformance with regulations and rules therefore as required in the current manual of survey instructions of the United States Department of the Interior, Bureau of Land Management or by a decree of a Court of Law and/or that the corner points mentioned in lines 3, 4 and 5 above were in conformance with the rules of the Michigan Board of Land Surveyors or by a Decree of a Court of Law; established, re-established, monumented, re-monumented, recovered, found as expressed below:



NOTE: Not more than 4 corners, all in the same town and range, may be recorded on this certificate.

A. Description of original monument and accessories and/or subsequent restoration:

Surveyed by Sylvester Sibley - 1823

Witnesses: White Oak 12 in. S73W 2.27
 Tammarak 10 in. Dia. N49E 2.17

Additional information on back.

B. Description of corner evidence found and/or method applied in restoring or reestablishing corner:

Found 1/2" Rerod in Centerline Kensington Road (Asphalt)

**SURVEY &
 REMONUMENTATION**

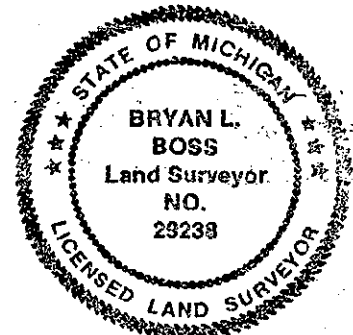
JAN 19 1999

SECTION

C. Description of monument for corner and accessories established to perpetuate locating the position of the corner:

Set 1/2" x 30" Iron Rod and Raised with
 1 1/4" x 36" I. Pipe with Brass Cap Marked
 Livingston Co. Monument Corner in Monument Box

N30°W 82.35' Spike E/Side Willow
 East 31.24' Spike S/Side Power Pole
 West 32.75' Top Fence Post
 S30°E 93.0' Spike W/Side 6" Elm



Signed by *Bryan L. Boss*

Date June 8, 1994

Surveyor's Michigan License No. 29238

PA. 346 1983, APPROVED BY LIVINGSTON COUNTY
 15 Oct 93