

FILED

AUG 9 3 43 PM '94

LAND CORNER RECORDATION CERTIFICATE
Filing Requirement of Act 74, Mich. P.A. 1970

NANCY HAVILAND
REGISTER OF DEEDS
LIVINGSTON COUNTY, MI
48843

For corners in

Livingston
(County)

Located In:

Corner Code #

1. Public Land Survey	T	3N	R	3E	L-9
	T		R		
	T		R		
	T		R		
2. Property Controlling in Section	S		T	R	
	S		T	R	
3. Miscellaneous Property in Sec.	S		T	R	
	S		T	R	

L.S.C.# 208m

Register of Deeds Stamp & File Number

4. Lot No. _____, Recorded Plat _____
5. Private Claims _____

A	B	C	D	E	F	G	H	I	J	K	L	M
2	6	5	4	3	2	1						
3												
4	7	8	9	10	11	12						
5												
6	18	17	16	15	14	13						
7												
8	19	20	21	22	23	24						
9												
10	30	29	28	27	26	25						
11												
12	31	32	33	34	35	36						
13												

Charles E Garlock, in a field survey on August 6, 1994

do hereby certify that under requirements of P.A. 74, Michigan P.A. of 1970, the corner points mentioned in lines 1 and 2 above were in conformance with regulations and rules therefore as required in the current manual of survey instructions of the United States Department of the Interior, Bureau of Land Management or by a decree of a Court of Law and/or that the corner points mentioned in lines 3, 4 and 5 above were in conformance with the rules of the Michigan Board of Land Surveyors or by a Decree of a Court of Law; established, re-established, monumented, re-monumented, recovered, found as expressed below:

NOTE: Not more than 4 corners, all in the same town and range, may be recorded on this certificate.

Description of original monument and accessories and/or subsequent restoration:

GLO survey date: April 15, 1825 by S Sibley
GLO witnesses: Tam 10-N68W-0.20 ch
Tam 7-S1W-0.29 ch

See additional data on rear of sheet

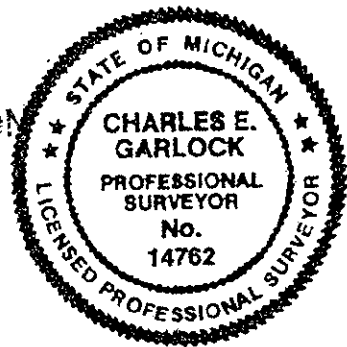
Description of corner evidence found and/or method applied in restoring or reestablishing corner:

Found 1/2" I. Rod

SURVEY &
REMONUMENTATION

SEP 26 1994

COMMISSION



Description of monument for corner and accessories established to perpetuate locating the position of the corner:

L-9: S 1/4 cor. Sec. 24, T3N-R3E, Handy Twp. Liv. Co. MI., set 1 1/4" X 36" I. Pipe with Liv. Co. Remon bras cap on top.
N70W-14.33'-sp & tag N/s 16" Elm
N45W-59.87'-sp & tag W/s 18" Willow
South-1.0'-water's edge
East-1.0'-waters edge
North-1.0'-Carsonite post
1/4 cor. is on the NW bank of 4 drainage ditches intersections and can be reached only from the West along the extension of an old road way.

Signed by Charles E Garlock Date August 6, 1994

Surveyor's Michigan License No. 14762

P.A. 346 1980, APPROVED BY LIVINGSTON COUNTY

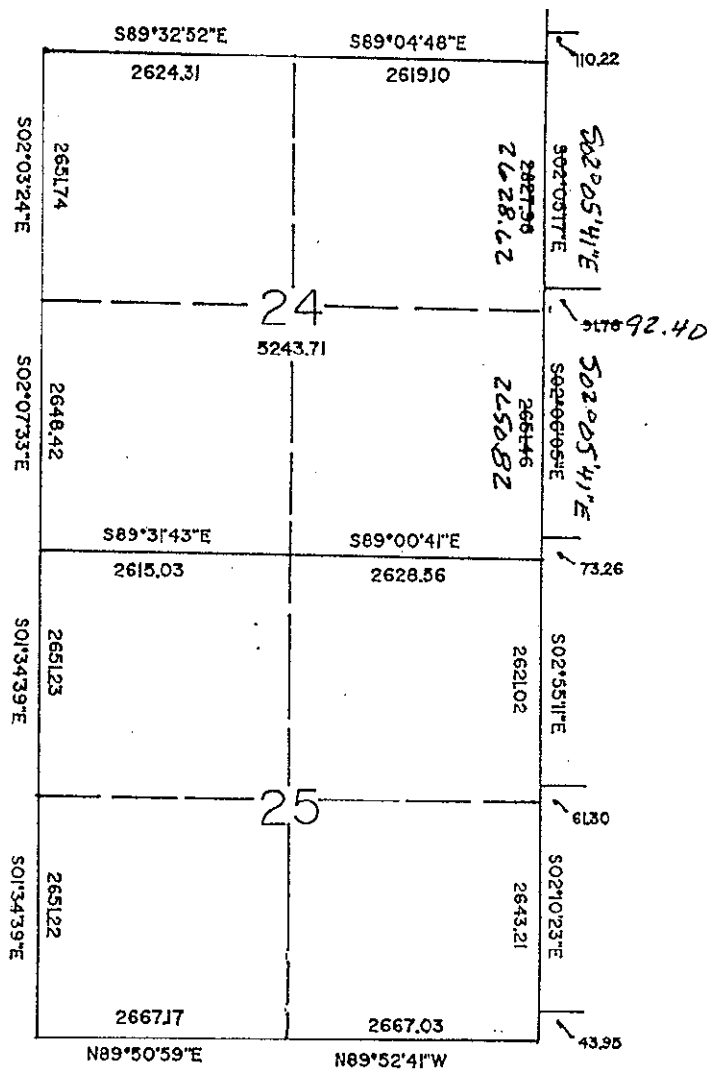
PEER GROUP ON 29 Jan 94 COL. REP. Rohli

CORNER SUMMARY

L-9: N 1/4 CORNER OF SECTION 25, T3N-R3E, HANDY TOWNSHIP,
LIVINGSTON COUNTY, MICHIGAN.

GLO SURVEY DATED APRIL 25, 1825 BY S. SIBLEY AND FOUND NONE OF THE
GLO WITNESSES REMAIN.

NO KNOWN SURVEY ACTIVITY PRIOR TO DETROIT EDISON'S SURVEY FOR THE
HIGH LINES, WHICH WAS DONE BY HENDESON-BATES. IN 1985 D HUGHES
FOUND SAID IRON AND MEASURED 2614.93 FEET WEST TO THE NORTHWEST
SECTION CORNER, BOSS ENGR HAD 2615.03 FEET AND BOSS ENGR ALSO
MEASURED EAST 2628.56 FEET TO THE NORTHEAST SECTION CORNER, WHICH
WAS THE SAME DISTANCE AS DETROIT EDISON HAD ON THEIR DRAWINGS.
FOUND A 1/2" I. ROD AT THE CORNER, WITNESSES CHECKED AND SAID
CORNER IS LOCATED NORTHWESTERLY AND NEAR THE INTERSECTION OF A 4-
WAY COUNTY DRAIN, DITCHES RUNNING NORTH-SOUTH AND EAST-WEST, FLOW
TO THE NORTH. CORNER IS LINED WITH TREES IN THE 3RD AND 4TH
QUADRANTS AND OPEN IN THE 1ST AND 2ND QUADS.; CORNER IS ON THE
PROJECTED CENTERLINE OF AN ABANDONED ROAD FROM THE WEST AND FOUND
NO OCCUPATION LINES REMAINED TO THE NORTH, SOUTH AND EAST.
FOUND NO OTHER IRONS IN THE AREA.



3N-3E, L-9