

FILED

AUG 9 3 43 PM '94

LAND CORNER RECORDATION CERTIFICATE
Filing Requirement of Act 74, Mich. P.A. 1970

NANCY HAVILAND
REGISTER OF DEEDS
LIVINGSTON COUNTY, MI
48843

For corners in

Livingston
(County)

Located In:

Corner Code #

- 1. Public Land Survey T 3N R 3E M-7
2. Property Controlling in Section S T R
3. Miscellaneous Property in Sec. S T R
4. Lot No. Recorded Plat
5. Private Claims

L.S.C. #209m
Register of Deeds Stamp & File Number

Grid table with columns A-M and rows 2-13. Contains numbers 1-36 in a grid pattern.

Charles E Garlock, in a field survey on July 6, 19 94, do hereby certify that under requirements of P.A. 74, Michigan P.A. of 1970, the corner points mentioned in lines 1 and 2 above were in conformance with regulations and rules therefore as required in the current manual of survey instructions of the United States Department of the Interior, Bureau of Land Management or by a decree of a Court of Law and/or that the corner points mentioned in lines 3, 4 and 5 above were in conformance with the rules of the Michigan Board of Land Surveyors or by a Decree of a Court of Law; established, re-established, monumented, re-monumented, recovered, found as expressed below:

NOTE: Not more than 4 corners, all in the same town and range, may be recorded on this certificate.

- A. Description of original monument and accessories and/or subsequent restoration:
GLO survey date: April 15, 1825 by S Sibley
GLO witnesses: Elm 10-N691/2W-0.26 ch
Ash 12-S591/2W-0.35 ch

See additional data on rear of sheet

- B. Description of corner evidence found and/or method applied in restoring or reestablishing corner:
Found 3/4" I. Pipe in Railroad Right-of-way about 14.5 ft. NE'ly of ctr. of tracks.
lines with occupation North and South

SURVEY &
REMONUMENTATION

SEP 26 1994

COMMISSION

- C. Description of monument for corner and accessories established to perpetuate locating the position of the corner:
M-7: NE corner Section 24, T3N-R3E, Handy TWP, Liv. Co. MI., re-set with 1 1/4" X 36"
I. Pipe (-0.2') with Liv. Co. REMON brass cap on top.
East-59.19'-sp & tag S/s U Pole
North-47.47'-sp & tag W/s wood corner post
N25W-57.30'-sp & tag W/s U Pole
S20W-13.55'-sp & tag in Railroad tie
S20W-14.80'-ctr. N'ly rail



Signed by [Signature]

Date August 6, 1994

Surveyor's Michigan License No. 14762

FORM APPROVED BY MICHIGAN STATE BOARD OF LAND SURVEYORS, JAN. 28, 1971
REVISED MAY 14, 1975
REVISED JAN., 1983

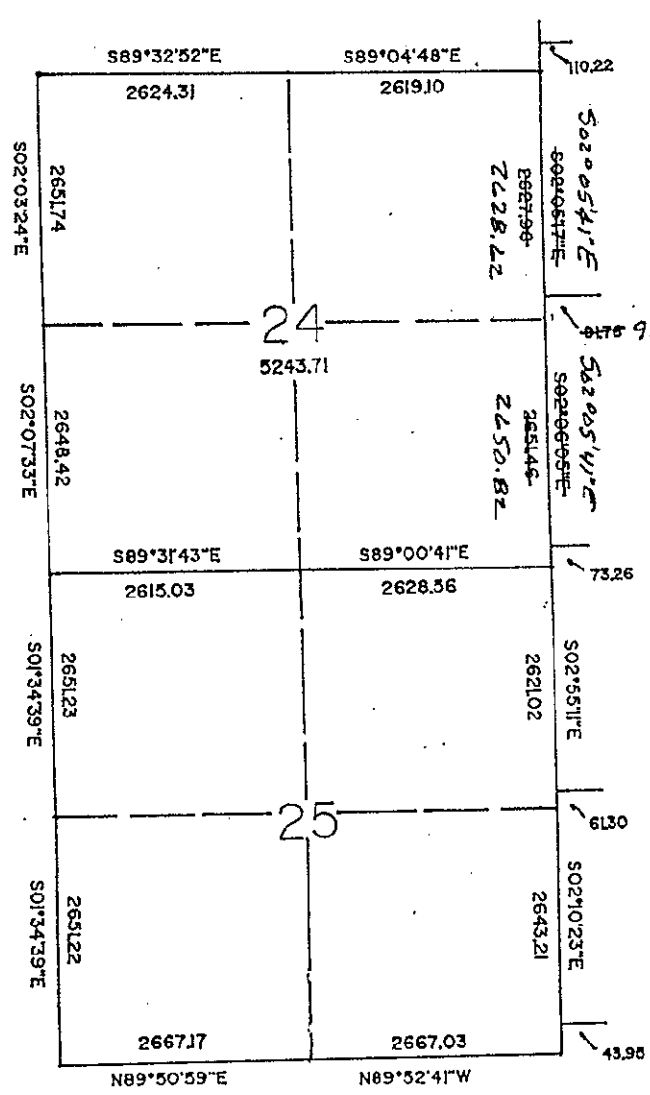
P.A. 345 1990, APPROVED BY LIVINGSTON COUNTY
PEER GROUP ON 29 Jun 94 CO. REP [Signature]

CORNER SUMMARY

M-7 NE COR. SEC. 24 T3N-R3E, HANDY TWP. L.I.V. CO. MI

GLO SURVEY DATE IS APRIL 15, 1825 BY S SIBLEY AND NONE OF THE GLO WITNESSES REMAIN.

NEXT KNOWN WITNESSES ARE BY MDOT IN 1958 TO FOUND 3/4" I. PIPE IN THE EDGE OF A RAILROAD GRADE ABOUT 14 FEET N'LY OF THE NORTH RAIL. LATER SURVEYS BY C WILSON, J ALBRIGHT, L BRYAN AND MYSELF WERE TO THE SAME POINT, BUT WE CALLED IT A 1/2" I PIPE WHICH WAS FOUND AGAIN AT THIS TIME. THREE OF THE WITNESSES ARE REPEATED MANY TIMES TO THE SAME WITNESS OBJECTS WITH ONLY SLIGHTLY DIFFERANT MEASURES SINCE 1958. FOUND ONE ACT 74 RECORDED AND TWO ACT 132'S. MEASURED WEST TO THE N 1/4 COR. 2618.68 BY DETROIT EDISON, 2620.73 BY MDOT, 2619.10 BY ALBRIGHT, 2619.09 BY BENTON, 2620.86 BY BRYAN AND 2619.10 BY BOSS. TO THE SOUTH I HAD A MEASURE OF 2627.98 TO THE E 1/4 COR., BOSS HAD 2535.48, DETROIT EDISON HAD 2538± AND MDOT HAD 2534.84 (FOUND NOTES WHERE THE OTHER SURVEYORS WERE USING THE W 1/4 COR. SEC. 19 HOWELL TWP. AS A COMMON CORNER WITH E 1/4 CORNER OF SEC. 24 HANDY). MEASURED NORTH 110.22 FEET TO THE NW COR. OF SEC. 19 HOWELL TWP. WHICH LINES WITH A ROAD TO THE EAST, THE JOG IS THE SAME AS GLO. FOUND OLD OCCUPATION LINES TO THE NORTH AND SOUTH AND LINES ± WITH THE ROAD TO THE WEST; CORNER IS LOCATED ON THE N'LY EDGE OF A RAILROAD GRADE, VOID OF TREES IN ALL DIRECTIONS, FOUND NO OTHER IRONS IN THE AREA.



7N 02 111 /