

FILED

11'

LAND CORNER RECORDATION CERTIFICATE  
Filing Requirement of Act 74, Mich. P.A. 1970

AUG 9 3 43 PM '94

NANCY HAVILAND  
REGISTER OF DEEDS  
LIVINGSTON COUNTY, MI  
48843

or corners in  
Livingston  
(County)

Located In: Corner Code #

Public Land Survey T 3N R 3E M-8

T \_\_\_\_\_ R \_\_\_\_\_

T \_\_\_\_\_ R \_\_\_\_\_

T \_\_\_\_\_ R \_\_\_\_\_

Property Controlling S \_\_\_\_\_ T \_\_\_\_\_ R \_\_\_\_\_

in Section S \_\_\_\_\_ T \_\_\_\_\_ R \_\_\_\_\_

Miscellaneous S \_\_\_\_\_ T \_\_\_\_\_ R \_\_\_\_\_

Property in Sec. S \_\_\_\_\_ T \_\_\_\_\_ R \_\_\_\_\_

L.S.C.#210m

Register of Deeds Stamp & File Number

Lot No. \_\_\_\_\_, Recorded Plat \_\_\_\_\_  
Private Claims \_\_\_\_\_

|    | A  | B | C  | D | E  | F | G  | H | I  | J | K  | L | M |
|----|----|---|----|---|----|---|----|---|----|---|----|---|---|
| 2  | 6  |   | 5  |   | 4  |   | 3  |   | 2  |   | 1  |   |   |
| 3  |    |   |    |   |    |   |    |   |    |   |    |   |   |
| 4  | 7  |   | 8  |   | 9  |   | 10 |   | 11 |   | 12 |   |   |
| 5  |    |   |    |   |    |   |    |   |    |   |    |   |   |
| 6  | 18 |   | 17 |   | 16 |   | 15 |   | 14 |   | 13 |   |   |
| 7  |    |   |    |   |    |   |    |   |    |   |    |   |   |
| 8  | 19 |   | 20 |   | 21 |   | 22 |   | 23 |   | 24 |   |   |
| 9  |    |   |    |   |    |   |    |   |    |   |    |   |   |
| 10 | 30 |   | 29 |   | 28 |   | 27 |   | 26 |   | 25 |   |   |
| 11 |    |   |    |   |    |   |    |   |    |   |    |   |   |
| 12 | 31 |   | 32 |   | 33 |   | 34 |   | 35 |   | 36 |   |   |
| 13 |    |   |    |   |    |   |    |   |    |   |    |   |   |

Charles E Garlock, in a field survey on August 5, 19 94  
I hereby certify that under requirements of P.A. 74, Michigan P.A. of 1970, the corner points mentioned in lines 1 and 2 above were in conformance with regulations and rules therefore as required in the current manual of survey instructions of the United States Department of the Interior, Bureau of Land Management or by a decree of a Court of Law and/or that the corner points mentioned in lines 3, 4 and 5 above were in conformance with the rules of the Michigan Board of Land Surveyors or by a Decree of a Court of Law; established, re-established, monumented, re-monumented, recovered, found as expressed below:

NOTE: Not more than 4 corners, all in the same town and range, may be recorded on this certificate.

Description of original monument and accessories and/or subsequent restoration:

GL0 survey date: April 15, 1825 by S Sibly  
GL0 witnessess: Tam 12-S6W-0.82 ch  
Tam 11-S84W-0.79 ch

See additional data on rear of sheet

Description of corner evidence found and/or method applied in restoring or reestablishing corner:

Found 1/2" I. Rod set by D Hughes as per notes by CW Gordon & MW Bullock, both County Surveyors, reset 1/4 corner 92.40 feet (1.40 chains) as per M W Bullock's field notes, South of the W 1/4 corner of Sec. 19, T3N-R4E and on line with the NE and SE section corners of 24.

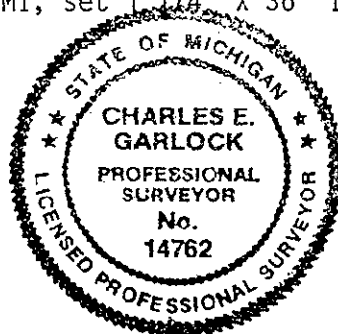
SURVEY &  
REMONUMENTATION

SEP 26 1994

COMMISSION

Description of monument for corner and accessories established to perpetuate locating the position of the corner:

M-8: E 1/4 corner Sec. 24 T3N-R3E, Handy Twp. Liv. Co. MI, set 1 1/4" X 36" I. pipe with Liv. Co. Remon brass cap on top.  
WNW-0.72'-1/2" I. rod set by D Hughes  
N2E-67.10'-sp & tag W/s 7" Elm  
S20E-26.69'-sp & tag W/s 12" Elm  
S10W-56.21'-sp & tag W/s group of 5" Maples  
S50W-42.88'-sp & tag N/s 12" Maple  
North-47'±-ctr. of Layton rd.  
North-92.40'-W 1/4 cor. Sec. 19 T3N-R4E  
South-0.6'-Carsonite post



Signed by Charles E. Garlock Date August 5, 1994

Surveyor's Michigan License No. 14762

CORNER SUMMARY

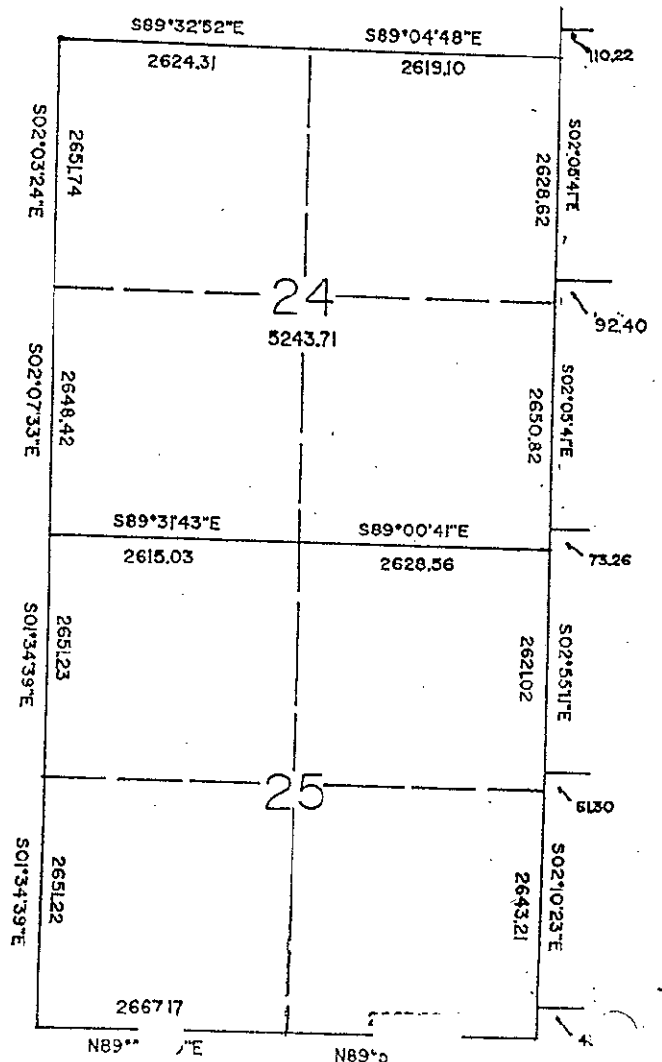
M-8: EAST 1/4 CORNER SECTION 24, T3N-R3E, HANDY TOWNSHIP, LIVINGSTON COUNTY, MICHIGAN.

GLO SURVEY DATED APRIL 15, 1825 BY S. SIBLEY AND FOUND NONE OF THE GLO WITNESSES REMAIN.

IN 1878 E GRANT WITNESSED THE CORNER, M BULLOCK STATED IN HIS SURVEY NOTES OF THE NORTHWEST FRL 1/4, SECTION 19 HOWELL TOWNSHIP, THAT HE BEGAN AT THE NORTHWEST SECTION CORNER AND RAN S4E 40.03 CH (2641.98') TO THE WEST 1/4 POST WHICH WAS LOCATED BY THE CLOSING DISTANCE FROM THE EAST 1/4 CORNER OF SECTION 24 HANDY TOWNSHIP 1.40 CH (92.4') NORTH. C GORDON IN 1931 SET A 1 1/4" X 36" I. PIPE FOR THE W 1/4 CORNER OF SECTION 19 HOWELL AS PER M BULLOCK'S NOTES WITH THE EAST 1/4 CORNER OF SECTION 24 HANDY BEING 1.4 CH SOUTH (92.4') AND THIS ALSO CHECKED WITH MEASURES BULLOCK HAD IN SECTION 19 HOWELL (SEE PAGE OF THE DOSEIER FOR GORDON'S AND BULLOCK'S NOTES). IN 1958 MDOT USED THE W 1/4 CORNER OF SECTION 19 HOWELL AS A COMMON CORNER WITH EAST 1/4 CORNER HANDY, AS DID L MUNSELL IN 1959; J ALBRIGHT USED THE SAME POINT AS MUNSELL IN THE DETROIT EDISON SURVEYS AS DID BOSS ENGR IN 1973, 1979 AND 1980, ALL CALLING THE CORNER A 1 1/2" I. PIPE. IN 1983 D HUGHES IN A SURVEY LOCATED IN BOTH HANDY AND HOWELL TOWNSHIPS RESET THE EAST 1/4 CORNER OF SECTION 24 HANDY AS PER BULLOCK'S AND GORDON'S NOTES, BUT AT THE CALCULATED GLO JOG OF 91.74 FEET INSTEAD OF THE 92.4 FEET PREVIOUSLY USED AND USED THE 1931 1 1/4" I. PIPE GORDON HAD SET FOR THE WEST 1/4 OF 19 HOWELL, LINING THE EAST 1/4 CORNER BETWEEN THE WEST 1/4 OF 19 AND THE SOUTHEAST CORNER OF SECTION 24 HANDY. FOUND NO ACT 74'S RECORDED AND TWO ACT 132'S, THAT USED THE INCORRECT CORNER. IT APPEARS ALL SURVEYS SINCE THE 1950'S HAVE CALLED THE CORNER COMMON WITH WEST 1/4 OF 19 HOWELL; WHEN IN THE FIRST PART OF THE CENTURY BULLOCK AND GORDON CALLED FOR A JOG AT THIS POINT. THERE APPEARS TO BE AN OLD FENCE LINE RUNNING NORTH-SOUTH ALONG THE TOWNSHIP LINE, LAYTON ROAD CURVES BETWEEN THE TWO 1/4 CORNERS. TO THE EAST THE W 1/4 CORNER LINES WITH THE CENTERLINE OF THE ROAD AND TO THE WEST THE CENTERLINE OF THE ROAD LINES TO A POINT ABOUT 30 FEET NORTH OF THE E 1/4 CORNER. FOUND A 1/2" I. ROD AT THE CORRECT CORNER IN A LOW SWAMPY AREA WITH TREES AND BRUSH SURROUNDING IT, FOUND NO OTHER IRONS IN THE AREA. MEASURED NORTH 2627.98 FEET TO THE NE CORNER SECTION 24 AND SOUTH 2651.46 FEET TO THE SE CORNER SECTION 24.

NOTE

MOTION MADE, SECONDED AND APPROVED BY THE PEER GROUP TO SET THE 1/4 CORNER AT M BULLOCK'S DISTANCE OF 1.4 CHAINS FROM THE WEST 1/4 CORNER OF SECTION 19 HOWELL TOWNSHIP AND ON A STRAIGHT LINE BETWEEN THE NORTHEAST AND SOUTHEAST SECTION CORNERS. THIS WOULD RELOCATE THE CORNER NEARER THE TRUE LOCATION THAT M BULLOCK HAD IT.



S-N-C-E-111-8-4