

"Be Sure of Your Ground"

CHARLES E. GARLOCK

PROFESSIONAL SURVEYOR

840 EAST DAVIS ROAD

HOWELL, MICHIGAN 48843

OFFICE: (517) 546-3340

FAX: 517 546-2941

July 27, 1993

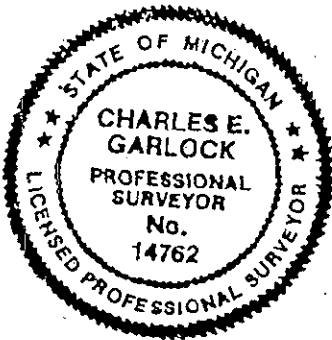
M-13: SE Corner Section 36 Howell Twp. Liv. Co. MI

Found one Act 74 recorded by MDOT in 1972 when they replaced 3/8" iron pipe inside a larger iron pipe in center of Lucy Rd. with a 1 1/2" iron pipe in a mon. box 3 inches below surface. Oldest known witness is to a 1 1/2" Gas Pipe by G.H. Dunning in 1920; found again in 1931 by C.W. Gordon, again by C.W. Gordon in 1945 and 1946 also with 3/8" iron pipe inside the bigger iron pipe and labeled it as a common township Corner. In 1971 I found the 3/8" iron pipe inside the larger gas pipe. Many surveys have been tied to this Corner by surveyors listed as:

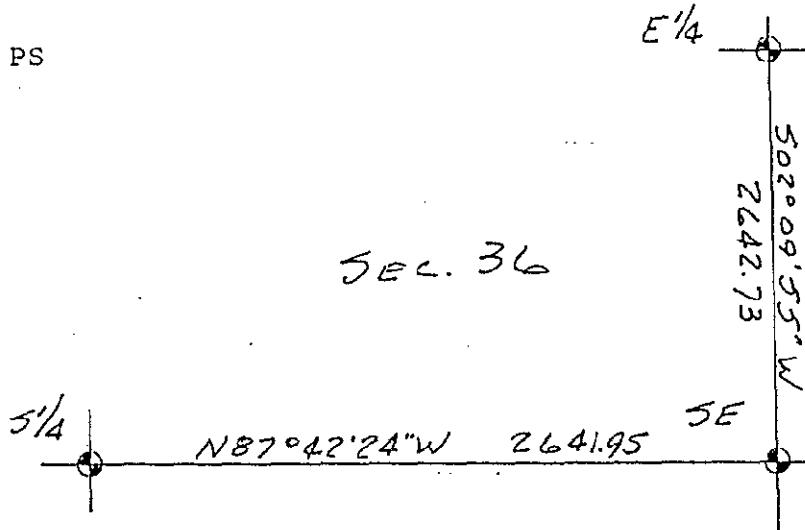
- L.A. Smith 1935 (Later Dean of Engr. at MSU)
- C.W. Gordon 1935, 42, 45, 46, 48
- L.W. Munsell 1954, 55, 57
- Boss Engineering 1972, 78, 88
- P.L. Benton 1972, 79
- C.E. Garlock 1971, 73, 76, 82, 85, 88
- MDOT 1972

The above surveys are located in Howell, Genoa and Marion Townships. Witnesses for this common Corner are also found in the above three Townships; many are the same distances to the same witness points. It is odd that I found nothing in Oceola Township. The mon. box and iron pipe is now located about 1 foot below the gravelled surface of Lucy Rd. with trees lining the West side of the Road but fairly open to the East.

Charles E. Garlock, PS



SEC. 36



BK 16804

SUCCESSOR TO: JUNE 1993

MILES W. BULLOCK, L.S. (1844 TO 1926)

GRANT H. DUNNING, P.E. (1865 TO 1928)

CLAY W. GORDON, RLS (1893 TO 1970)

LYLE W. MUNSELL, RLS (1904 TO 1987)