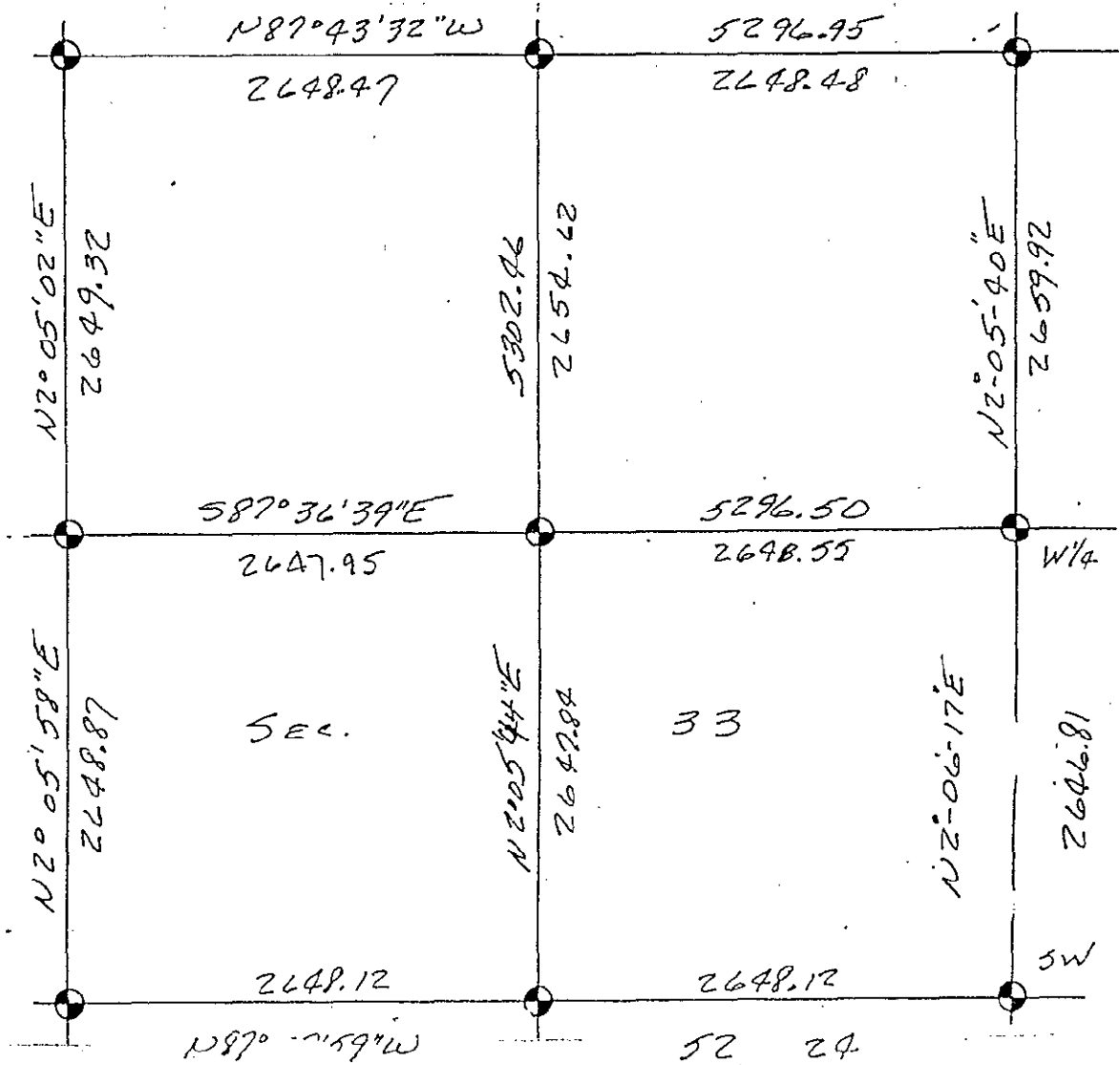
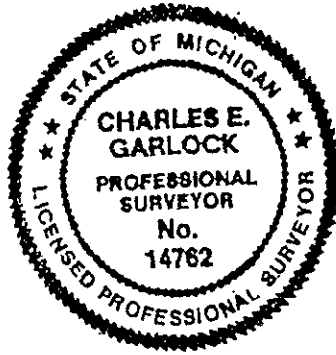


# CORNER SUMMARY

E-13: SW CORNER SECTION 33, T3N-R4E, HOWELL TOWNSHIP, LIVINGSTON COUNTY, MICHIGAN.

GLO SURVEY DATED APRIL 15, 1825 BY S SIBLEY AND NONE OF THE GLO WITNESSES REMAIN.  
 MW BULLOCK, COUNTY SURVEYOR, WITNESSED SAID CORNER IN 1868 AND NONE OF HIS WITNESSES WERE REPEATED BY GH DUNNING IN 1910. BOSS ENGR. FOUND A 1/2" I. ROD NEAR THE INTERSECTION OF BURKHART AND MASON ROADS IN 1972, THE SAME IRON BEING USED BY PL BENTON-1979, CHMP-1979, DESINE-1992 AND MYSELF-1988. FOUND THE NW CORNER OF SECTION 4 MARION TWP. 301.23 FT. EAST AND 4.11 FT. SOUTH OF THE SECTION LINE. GLO JOG IS 277.20 FT. ONE ACT 74 RECORDED AND TEN ACT 132'S USING THE SAME CORNER. NO KNOWN DISTANCE NORTH OR EAST BY PREVIOUS COUNTY SURVEYORS; I MEAS'D NORTH 2648.87 FT. TO THE W 1/4 CORNER; DESINE HAD 2648.84 FT.; PL BENTON HAD 2647.11 FT, CHMP HAD 2648.96 FT. AND BOSS ENGR. HAD 2648.00 FT. I MEAS'D EAST 5296.24 FT. TO THE SE CORNER OF SECTION 33 AND DESINE HAD 5295.84 FT. IRON IS LOCATED IN AN ASPHALT ROADWAY INTERSECTION WITH THE AREA OPEN TO THE WEST, SEVERAL TREES NW, SE AND EAST. FOUND NO OTHER IRONS IN THE AREA. NOTE: SW, W 1/4 & NW CORNER OF SEC. 33 LINE UP WITH ONLY A 56 SECOND DEFLECTION AND WITHIN 0.23 FT. OF 1/2 DISTANCE AT THE 1/4 CORNER.

*Charles E. Garlock*



T3N-R4E E-13 4