

SURVEY & REMONUMENTATION

FEB 25 1999

LAND CORNER RECORDATION CERTIFICATE
Filing Requirement of Act 74, Mich. P.A. 1970

SECTION

For corners in

<u>LIVINGSTON</u> (County)	Located In:	Corner Code #
1. Public Land Survey	T <u>3</u> N R <u>4</u> E	<u>E9</u>
	T___ R___	_____
	T___ R___	_____
	T___ R___	_____
2. Property Controlling in Section	S___ T___ R___	_____
	S___ T___ R___	_____
3. Miscellaneous Property in Sec.	S___ T___ R___	_____
	S___ T___ R___	_____

1998 JUN 11 P 1:50
 HANCOCK HAVILLAND
 REGISTER OF DEEDS
 LIVINGSTON COUNTY, MI.
 48843
 L.S.C. #845m
 Register of Deeds Stamp & File Number

FILED

4. Lot No. _____, Recorded Plat _____
 5. Private Claims _____

I, CHARLES E GARLOCK, in a field survey on JUNE 4 19 98 do hereby state that under requirements of P.A. 74, Michigan P.A. of 1970, the corner points mentioned in lines 1 and 2 above were in conformance with regulations and rules therefore as required in the current manual of survey instructions of the United States Department of the Interior, Bureau of Land Management or by a decree of a Court of Law and/or that the corner points mentioned in lines 3, 4 and 5 above were in conformance with the rules of the Michigan Board of Land Surveyors or by a Decree of a Court of Law; established, re-established, monumented, recovered, found as expressed below:

NOTE: Not more than 2 corners, all in the same town and range, may be recorded on this certificate.

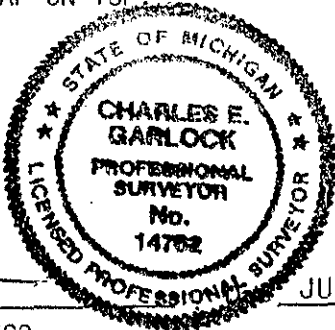
1	A	B	C	D	E	F	G	H	I	J	K	L	M
2		6		5		4		3		2		1	
3													
4		7		8		9		10		11		12	
5													
6		18		17		16		15		14		13	
7													
8		19		20		21		22		23		24	
9													
10		30		29		28		27		26		25	
11													
12		31		32		33		34		35		36	
13													

A. Description of original monument and accessories and/or subsequent restoration:
 GLO SURVEY DATED: APRIL 15, 1825 BY S SIBLEY, DS
 GLO WITNESSES: W06-S52½E-21 LKS
 W08-N4W-30 LKS

ADDITIONAL DATA ON REAR OF SHEET

B. Description of corner evidence found and/or method applied in restoring or reestablishing corner:
 FOUND 1/2" I. ROD BETWEEN AIRPORT TAXIWAY AND RUNWAY, REMAINS OF OCCUPATION TO THE SOUTH, MEAS. SOUTH TO CENTERLINE OF GRAND RIVER AVE. CHECKED WITH L. W. MUNSELL SURVEY AND WEST TO SECTION CORNER BY BOSS ENGR. AND ABOUT 200' SELY OF CROSS OVER TAXIWAY BETWEEN TAXIWAY AND RUNWAY.

C. Description of monument for corner and accessories established to perpetuate locating the position of the corner:
 F9: S½ COR. SEC. 21 T3N-R4E, HOWELL TWP. LIV. CO. MI., RESET ½" I. ROD WITH 1¼" X 36" BREAKAWAY I. PIPE WITH LIV. CO. REMON BRASS CAP ON TOP.
 NE'LY-55.90'-S'LY EDGE OF RUNWAY
 SW'LY-139.3'-N'LY EDGE OF TAXIWAY
 N67E-119.13'-RUNWAY LIGHT
 N14W-88.81'-RUNWAY LIGHT
 S19W-159.71'-TAXIWAY LIGHT
 S64W-154.84'-TAXIWAY LIGHT



Signed by [Signature]
 Surveyor's Michigan License No. 14762

JUNE 8, 1998

3N4E F9

FILED

AUG 8 12 56 PM '94

LAND CORNER RECORDATION CERTIFICATE
Filing Requirement of Act 74, Mich. P.A. 1970

NANCY HAVILAND
REGISTER OF DEEDS
LIVINGSTON COUNTY, MI
48843

For corners in

Livingston (County) Located In: Corner Code #F-11
1. Public Land Survey T3N R 4E
2. Property Controlling In Section S T R
3. Miscellaneous Property in Sec. S T R
4. Lot No. Recorded Plat
5. Private Claims

L.S.C#198m

Register of Deeds Stamp & File Number

Grid table with columns A-M and rows 2-13. Section 33 is marked with a dot at the intersection of column G and row 11.

I, Charles E. Garlock, in a field survey on June 7, 1994, do hereby certify that under requirements of P.A. 74, Michigan P.A. of 1970, the corner points mentioned in lines 1 and 2 above were in conformance with regulations and rules therefore as required in the current manual of survey instructions of the United States Department of the Interior, Bureau of Land Management or by a decree of a Court of Law and/or that the corner points mentioned in lines 3, 4 and 5 above were in conformance with the rules of the Michigan Board of Land Surveyors or by a Decree of a Court of Law; established, re-established, monumented, re-monumented, recovered, found as expressed below:

NOTE: Not more than 4 corners, all in the same town and range, may be recorded on this certificate.

A. Description of original monument and accessories and/or subsequent restoration:
GLO survey dated April 25, 1825, S Sibley DS
GLO witnesses: W024-N41W-0.52 ch
W014-S37E-0.79 ch

SURVEY & REMONUMENTATION

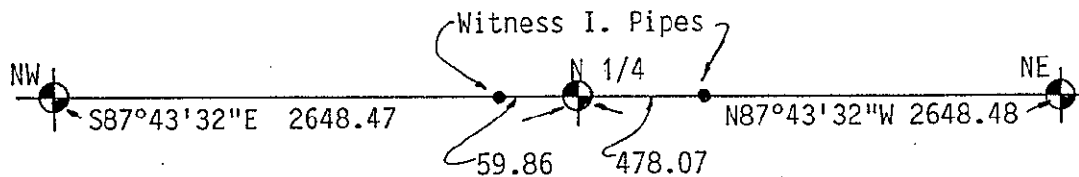
SEP 26 1994

COMMISSION

Additional data on rear of sheet

B. Description of corner evidence found and/or method applied in restoring or reestablishing corner:

Found no iron, point falls in Howell Township sewage plant lagoon. Will set reference points on Section line. Corner will be established on paper at 1/2 distance between Northeast and Northwest section corners and on line with said section corners.



C. Description of monument for corner and accessories established to perpetuate locating the position of the corner:
F-11; N 1/4 corner Section 33, T3N-R4E, Howell Twp. Liv. Co. MI.; set two witness I. Pipes on North line of Section 33, 1" X 36" I. Pipes with Liv. Co. Remon witness brass cap
The West iron located N87°43'32"W 59.86 feet from the North 1/4 corner.
The East Iron located S87°43'32"E 478.07 feet from the North 1/4 Corner.
Witnesses to West I. Pipe: S10E-210.72'-NW cor. Maint. Bldg pole barn; N50W-129.63'-sp & tag S/s U, Pole; S15W-209.69'-sp & tag E/s U. Pole; East-10.6'-ctr. N-S Maint. Road top of berm; South-154.8'-ctr. Maint. Road to East
Witnesses to East I. Pipe: South-19.27'- NW corner Conc. Abut. 8' X 14'; S10E-20.82'-NE corner Conc Abut. 8' X 14' Abut. above has 5 gate valves; S45E-34.92'-ctr. East end 12" dia. Steel pipe; West-7.5'-ctr. N-S berm Road between W. & E. pon; South-140.7'-ctr. maint. road running E.-W.

Signed by Charles E. Garlock Date August 3, 1994
Surveyor's Michigan License No. 14762