

CORNER SUMMARY

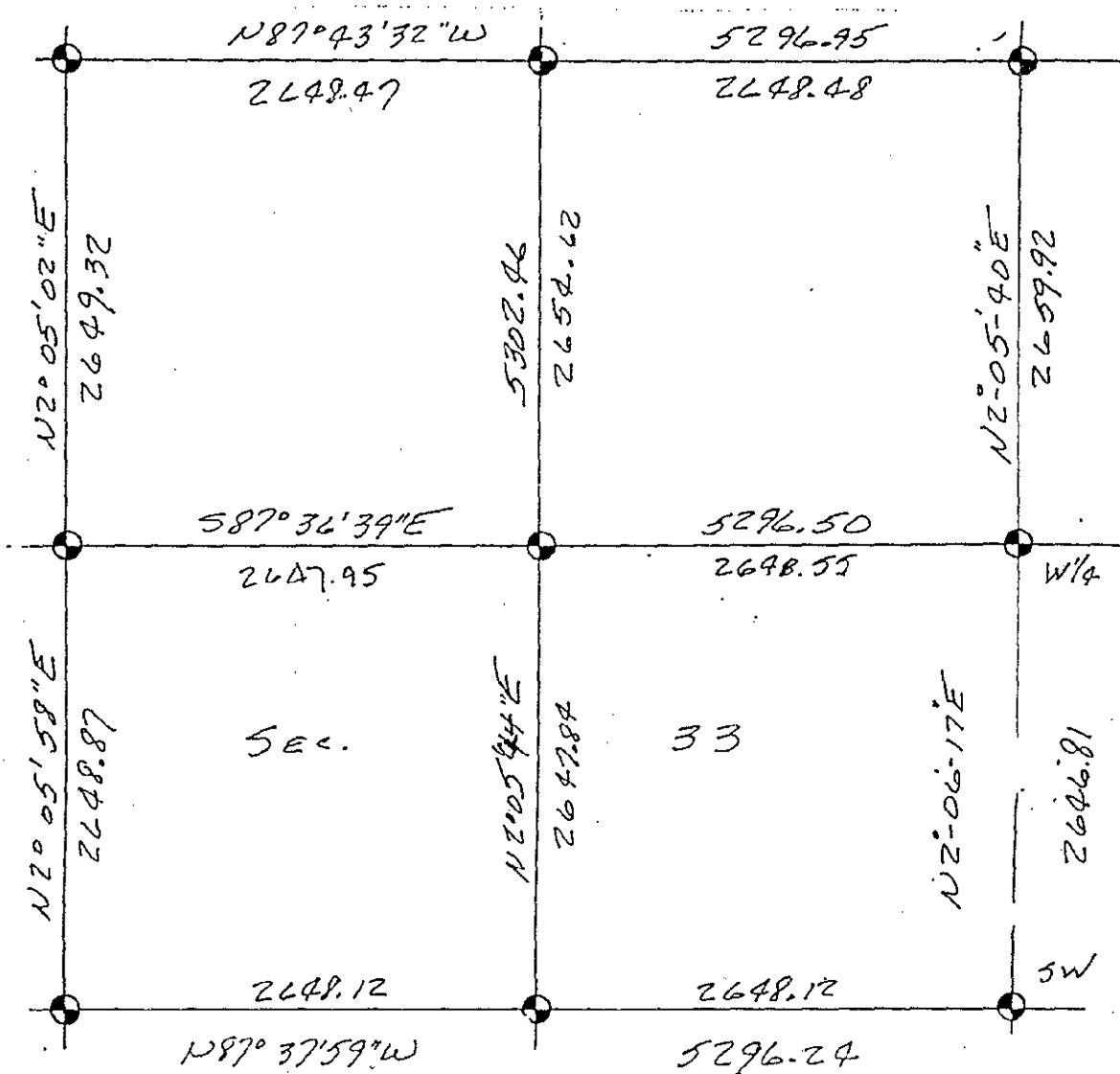
F-13: S 1/4 CORNER, SECTION 33, T3N-R4E, HOWELL TOWNSHIP,
LIVINGSTON COUNTY, MICHIGAN.

GLO DATE OF SURVEY APRIL 15, 1825 BY S. SIBLEY AND NONE OF GLO
WITNESSES REMAIN.

FOUND NO RECORDED HISTORY OF PRIOR WITNESSES OR DISTANCES ALONG
SECTION LINE EXCEPT THOSE OF GLO NOTES, IN EITHER THE OLD COUNTY
SURVEYOR RECORDS OR PRIOR TO 2-3 YEARS AGO. DESINE ENGR. SET A
3/4" I. PIPE ON LINE WITH THE SW AND SE SECTION CORNERS AT 1/2 THE
DISTANCE OF 2647.92 FEET, I MEAS'D 2648.12 FEET. FOUND NO OTHER
IRONS IN THE AREA. IRON MATCHES ± WHAT MIGHT BE THE REMAINS OF A
TREE ROW TO THE NORTH AND THE N 1/4 CORNER OF SECTION 4 MARION
TWP. LIES 275.73 FT. TO THE EAST AND 1.02 FT. TO THE NORTH OF THE
SECTION LINE; GLO NOTES WOULD CALC. THE JOG AT 264.99 FT. CORNER
IS IN AN ASPHALT ROADWAY WITH LARGE OVER HANGING TREES LINING THE
ROAD BOTH DIRECTIONS.



Charles E. Garlock



W. T. E. M.
F-13
7