

"Be Sure of Your Ground"

CHARLES E. GARLOCK

PROFESSIONAL SURVEYOR

840 EAST DAVIS ROAD

HOWELL, MICHIGAN 48843

OFFICE: (517) 546-3340

FAX: 517 546-2941

July 26, 1993

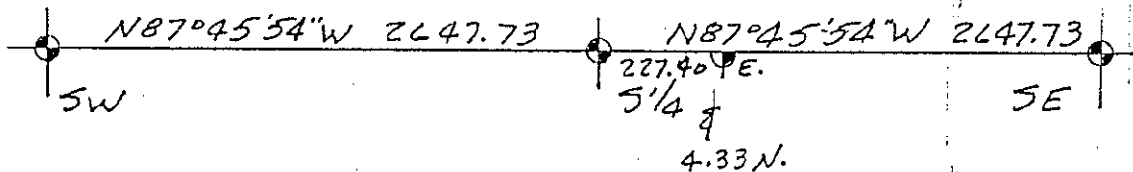
H-13: S $\frac{1}{4}$ corner Section 34 Howell Twp. Liv. Co. MI

No known witnesses or surveys to this corner prior to 1981. At this time Boss Engineering established the corner on line with the SE and SW section corners and at half the distance, 2647.78 feet. Desine Engineering set a 3/4" iron pipe at this point but measured 2647.64 feet for the half-distance between section corners. I measured 2647.73 feet for the half-distance and found the N $\frac{1}{4}$ corner of Section 3 T2N-R4E to be 227.40 feet East and 4.33 feet North of the section line. The corner is located in the asphalt surface of Mason Rd., 2.5 feet South of the North edge of pavement, about 7 feet east of a concrete bridge with low, swampy-type land in the Northwest, Northeast and Southeast quadrants; heavy woods in the Southeast quadrant, but open area to the Southwest, Northwest and Northeast.

Charles E. Garlock, PS



SEC. 34



Bx16804 SUCCESSOR TO: JUNE 1993
MILES W. BULLOCK, L.S. (1844 TO 1926) ● GRANT H DUNNING, P.E. (1865 TO 1928)
CLAY W. GORDON, RLS (1883 TO 1970) ● LYLE W. MUNSELL, RLS (1904 TO 1987)