

SERVING LIVINGSTON COUNTY
SINCE 1868

"Be Sure of Your Ground"

CHARLES E. GARLOCK

PROFESSIONAL SURVEYOR

840 EAST DAVIS ROAD
HOWELL, MICHIGAN 48843

OFFICE: (517) 546-3340

FAX: 517 546-2941

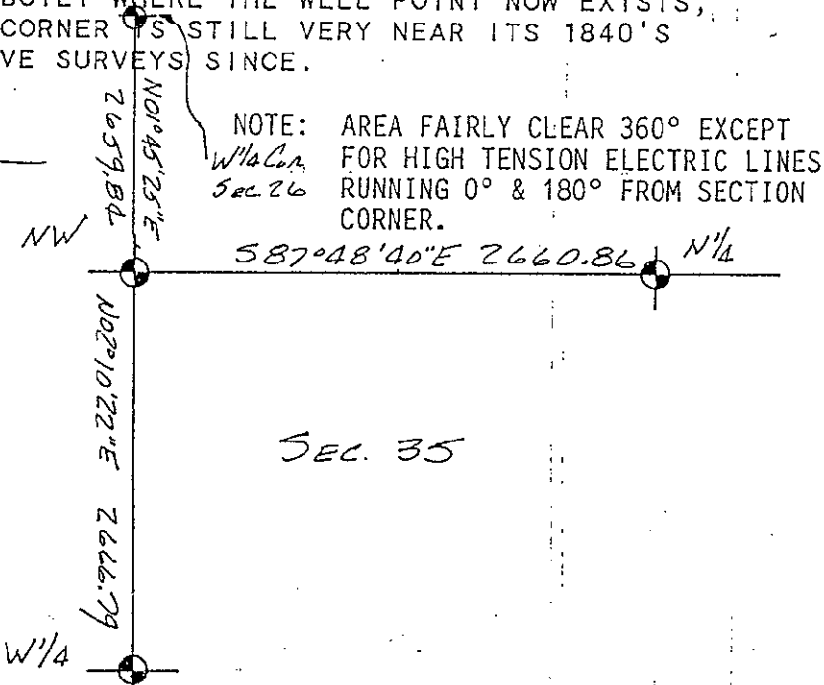
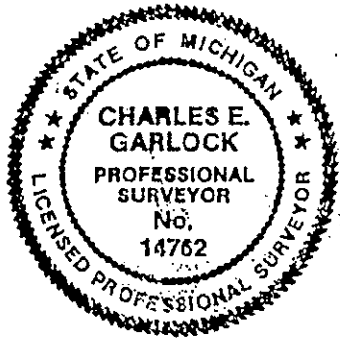
AUGUST 8, 1993

I-11: NW CORNER SECTION 35 HOWELL TWP. LIV. CO. MI

EARLIEST KNOWN WITNESS WAS BY A. ADAMS, COUNTY SURVEYOR IN THE 1840'S; 7.28 CH. (480.48FT) NORTH OF GRAND RIVER (GRAVEL) AND CORNER LISTED AS A "STONE" 10 1/2LKS (6.93FT) WEST OF AN IRON STAKE IN A FENCE. IN 1907 M. W. BULLOCK FOUND NW CORNER AND AN IRON STAKE IN THE FENCE 7 FT. EAST OF SAID CORNER. IN 1932 C W GORDON FOUND STONE IN CENTER OF LANE 1 ROD WIDE, 1/2 ROD EACH SIDE OF STONE WITH AN IRON IN THE FENCE ABOUT 9FT± EAST, "THIS WAS SHOWN TO ME BY MR. GILKES SEVERAL YEARS AGO" AND GORDON MEASURED 453.5 FT. SOUTH TO THE CENTER OF GRAND RIVER RD. (GRAVEL). SINCE 1932 MANY SURVEYS HAVE BEEN TIED TO THIS CORNER, BUT NONE HAVE DESCRIBED THE CORNER AS A STONE OR WELL POINT. IN 1960 LW MUNSELL FOUND A 3/4 " PIPE WHEN SURVEYING FOR THE NEW HIGH SCHOOL AND MEASURED 453.67 FEET TO THE CENTER OF GRAND RIVER AVE. (PAVED) IN 1965 I FOUND THE SAME 3/4" PIPE AND ALL SURVEYORS SINCE, INCLUDING MYSELF, HAVE FOUND A 1 1/2" TO 2" WELL POINT WHICH INCLUDES THE FOLLOWING: PL BENTON, BOSS ENGR., WASH. ENGR., MC NAMEE-PORTER AND SEELEY, LIV. CO. RD. COMM. AND MYSELF. SINCE C W GORDON MEASURED 453.5 FT. TO THE CENTER OF GRAND RIVER RD. ALL KNOWN SURVEYORS HAVE MEASURED 452.66 FT. TO 454.92 FT., THE MAJORITY, BETWEEN 453.5 FT. TO 454.2 FT.

WHEN THE NEWER HOWELL HIGH SCHOOL WAS BUILT IN THE EARLY 1960'S ON THE PROPERTY EAST AND ADJACENT TO THE WEST LINE OF SECTIONS 26 AND 35 HOWELL TOWNSHIP, A GREAT DEAL OF MASS GRADING WAS DONE AND A BANK 8 TO 10 FEET HIGH WAS BUILT WHERE THE WELL POINT NOW EXISTS, BUT IT APPEARS THE SECTION CORNER IS STILL VERY NEAR ITS 1840'S LOCATION WITH THE SUCCESSIVE SURVEYS SINCE.

CHARLES E GARLOCK, PS



NOTE: AREA FAIRLY CLEAR 360° EXCEPT FOR HIGH TENSION ELECTRIC LINES RUNNING 0° & 180° FROM SECTION CORNER.

OK 16804+

JUNE 1993

SUCCESSOR TO:

- MILES W. BULLOCK, L.S. (1844 TO 1928)
- CLAY W. GORDON, RLS (1883 TO 1970)
- GRANT H DUNNING, P.E. (1885 TO 1928)
- LYLE W. MUNSELL, RLS (1904 TO 1987)

OCT 25 1993

FILED

COMMISSION

LAND CORNER RECORDATION CERTIFICATE
Filing Requirement of Act 74, Mich. P.A. 1970

OCT 12 10 18 AM '93
NANCY HAVILAND
REGISTER OF DEEDS
LIVINGSTON COUNTY, MI
48843

For corners in
Livingston
(County)

Located In: Corner Code #

- 1. Public Land Survey T 3N R 4E I-12
- T _____ R _____
- T _____ R _____
- T _____ R _____
- 2. Property Controlling S _____ T _____ R _____
- in Section S _____ T _____ R _____
- 3. Miscellaneous S _____ T _____ R _____
- Property in Sec. S _____ T _____ R _____

L.S.C.# 12m

Register of Deeds Stamp & File Number

- 4. Lot No. _____, Recorded Plat _____
- 5. Private Claims _____

	A	B	C	D	E	F	G	H	I	J	K	L	M
2	6	5	4	3	2	1							
3													
4	7	8	9	10	11	12							
5													
6	13	17	16	15	14	13							
7													
8	19	20	21	22	23	24							
9													
10	30	29	28	27	26	25							
11													
12	31	32	33	34	35	36							
13													

I, Charles E Garlock in a field survey on October 8, 19 93, do hereby certify that under requirements of P.A. 74, Michigan P.A. of 1970, the corner points mentioned in lines 1 and 2 above were in conformance with regulations and rules therefore as required in the current manual of survey instructions of the United States Department of the Interior, Bureau of Land Management or by a decree of a Court of Law and/or that the corner points mentioned in lines 3, 4 and 5 above were in conformance with the rules of the Michigan Board of Land Surveyors or by a Decree of a Court of Law; established, re-established, monumented, re-monumented, recovered, found as expressed below:

NOTE: Not more than 4 corners, all in the same town and range, may be recorded on this certificate.

- A. Description of original monument and accessories and/or subsequent restoration:
GLO notes dated: April 15, 1825
GLO witnesses: WO 9-S65W-29 lks
WO 7-N40½E-25 lks

Additional historical data on back of sheet

- B. Description of corner evidence found and/or method applied in restoring or reestablishing corner:
NOTE: This corner is inaccessible due to a building located over it. Established 3 reference monuments, 1 each, on East-West 1/4 line to the East, on East-West 1/4 line to West and on Section line to South in addition to reference monument set by A Butterfield on Section line to North and shown on ACT 74 recorded, LSC # 1451 Liv. Co. Records.

Location of reference points set/found from I-12 are listed below.

- C. Description of monument for corner and accessories established to perpetuate locating the position of the corner:
Found Conc. Mon. 236.41 Set 1" X 36" I. pipe Set 1"X36" I. Pipe Set 1"X36" I. Pipe
ft. N02°10'22"E on Sec. with brass cap, 779.28' with brass cap 605.92' with brass cap 633.00'
line. S87°41'04"E on E-W ¼ N87°48'15"W on E-W ¼ ft. S01°48'09"W
West-67.54' - "+" in Conc. line. line. on Sec. line.
light base South-1.8'-back of curb East-0.1'-back of curb W'ly-46.42'-face of
N24E-81.02'-NE cor. C.B. E'ly-48.93'-nearest CB S'ly-75.98'-nearest edge light pole
S50E-150.68'-c/l Fire Hd E'ly-59.00'-next CB of C.B. N'ly-0.8'-back of cu
S55W-30.12'-c/l water met W'ly-11.24'-face light N45E-71.35'-SW cor. S70W-32.68'-c/l water
pole light pole meter
Approved by Livingston N70W-131.27'-sp S/s S45E-63.55'-c/l Fire S10E-29.65'-c/l 1"
County Monumentation U Pole Hydrant Pine
Peer Group:
August 18, 1993

Signed by Charles E Garlock Date October 9, 1993

Surveyor's Michigan License No. 14762

10/26/93