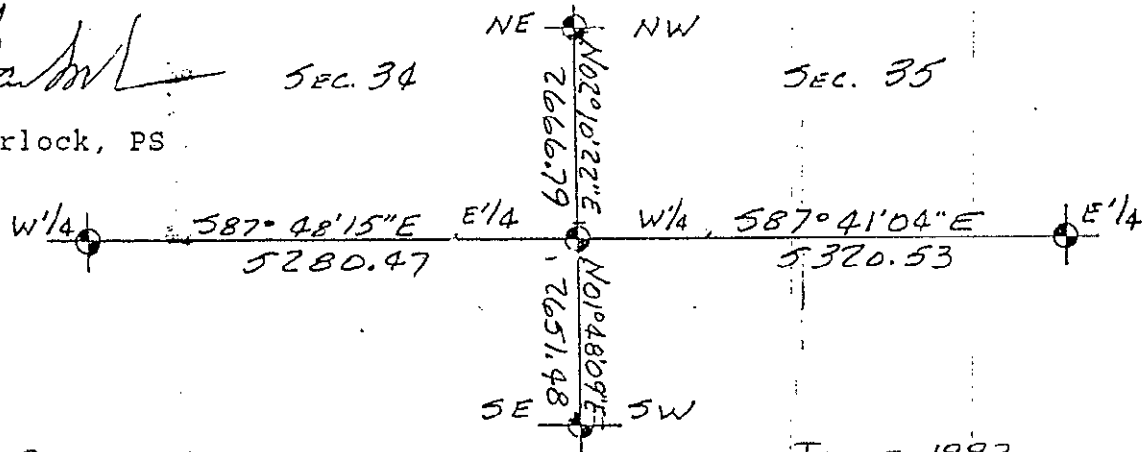


Two Act 74's have been recorded. In 1973 C.C. Wilson found a spike in top of post from previous witnesses, by L W Munsell, and reset it with a 3/4" iron pipe at the base of the post. A. Butterfield found said 3/4" iron pipe using C. Wilson's witnesses but now states the point is "inaccessible due to building location" and then set reference monuments 236.41 feet North on line with NW Corner Section 35, which is 2666.64 feet North of W 1/4 Corner, and set two reference monuments South on line 512.25 feet and 943.62 feet from the West 1/4 Corner Section 35. Distance South from West 1/4 Corner to SW Corner of Section 35 is 2651.38 feet and a distance West of 2638.87 feet to the monumented Center of Section 34. An old witness by G.H. Dunning 1915 had the Corner located N45°E 1.98 feet from the Anchor Post, but all recent surveys are tied to a point on the North side of said post. The following surveyors have used the most recent iron pipe or reference points to said iron pipe (W 1/4 Corner Section 35): Washtenaw Engineering 1973, 1975; Boss Engineering 1975, 1981, 1984, 1988 and 1991; C.W. Gordon 1944; Garlock 1974; P.L. Benton 1980, 1984; Desine Engineering 1990. My measures from rebuilt West 1/4 Corner Section 35 on paper using A. Butterfield's concrete monument 236.41 feet North of 1/4 Corner are 2430.38 to NW Corner Section 35 (2666.79 feet from W 1/4 Corner to NW Corner) and W 1/4 to SW Corner 2651.48 feet with a deflection angle of 0°21'13" as opposed to A. Butterfield's deflection of 0°22'17". I recommend we use A. Butterfield's concrete monument North of the W 1/4 Corner and South of W 1/4 Corner, and set two more: one in sodded area East on E-W 1/4 line, one in sodded area West on E-W 1/4 line. Area is woven with asphalt drives and parking lots around present building with signs of expansion to the West. Should coordinate with Ogihara in the setting of additional reference points.

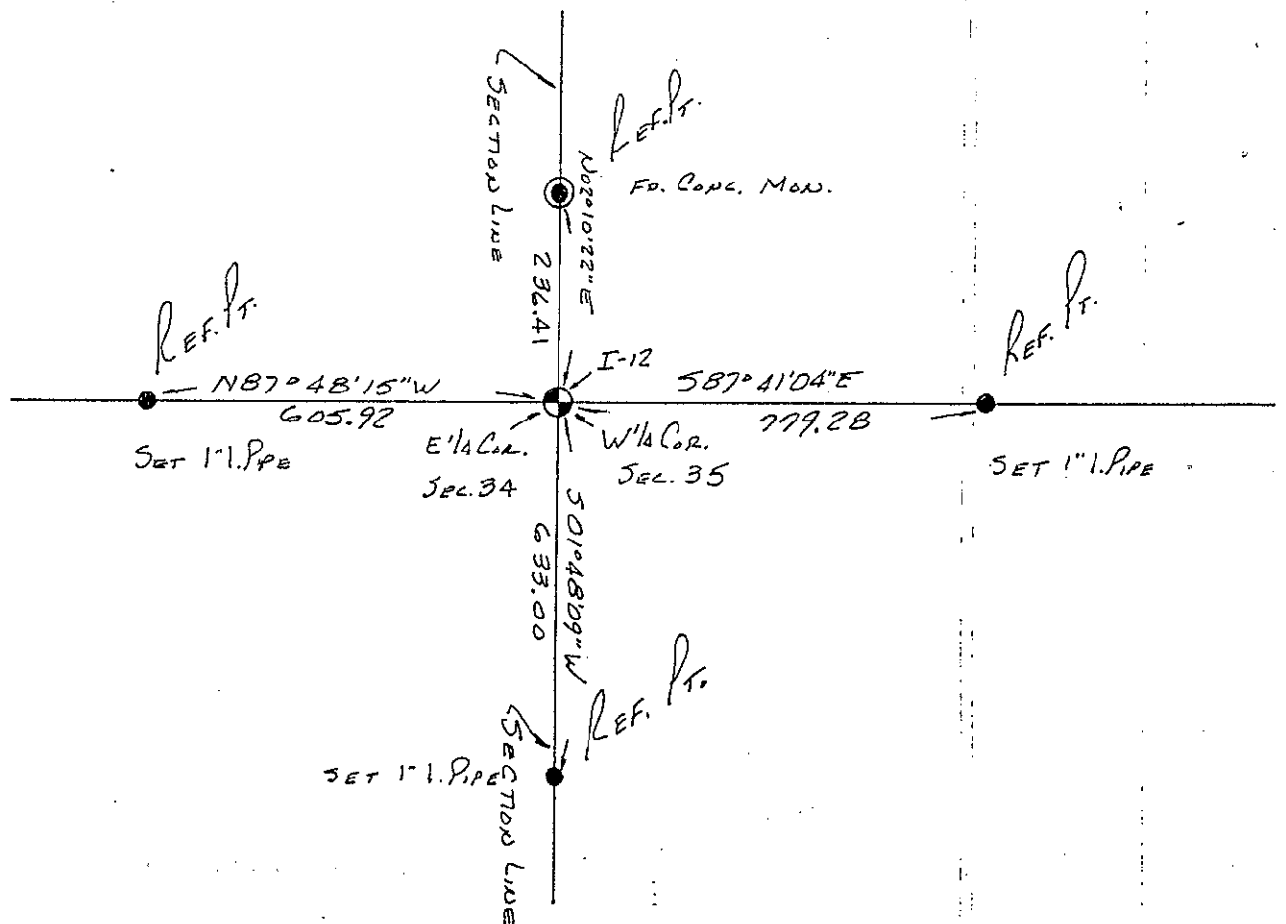
Charles E. Garlock

Charles E. Garlock, PS



Bk 16804 SUCCESSOR TO:

JUNE 1993



SURVEY & REMONUMENTATION

FILED

OCT 25 1993

OCT 18 9 18 AM '93

COMMISSION

LAND CORNER RECORDATION CERTIFICATE
Filing Requirement of Act 74, Mich. P.A. 1970

NANCY HAVILAND
REGISTER OF DEEDS
LIVINGSTON COUNTY, MI
48843

For corners in

Livingston
(County)

Located In:

Corner Code #

- 1. Public Land Survey T 3N R 4E I-13
 T _____ R _____
 T _____ R _____
 T _____ R _____
- 2. Property Controlling S _____ T _____ R _____
 in Section S _____ T _____ R _____
- 3. Miscellaneous S _____ T _____ R _____
 Property in Sec. S _____ T _____ R _____
- 4. Lot No. _____, Recorded Plat _____
- 5. Private Claims _____

C.L.S.# 21m

Register of Deeds Stamp & File Number

I, Charles E Garlock in a field survey on October 15, 19 93, do hereby certify that under requirements of P.A. 74, Michigan P.A. of 1970, the corner points mentioned in lines 1 and 2 above were in conformance with regulations and rules therefore as required in the current manual of survey instructions of the United States Department of the Interior, Bureau of Land Management or by a decree of a Court of Law and/or that the corner points mentioned in lines 3, 4 and 5 above were in conformance with the rules of the Michigan Board of Land Surveyors or by a Decree of a Court of Law; established, re-established, monumented, re-monumented, recovered, found as expressed below:

	A	B	C	D	E	F	G	H	I	J	K	L	M
2	6	5	4	3	2	1							
3													
4	7	8	9	10	11	12							
5													
6	18	17	16	15	14	13							
7													
8	19	20	21	22	23	24							
9													
10	30	29	28	27	26	25							
11													
12	31	32	33	34	35	36							
13													

NOTE: Not more than 4 corners, all in the same town and range, may be recorded on this certificate.

A. Description of original monument and accessories and/or subsequent restoration:

GLO notes dated: April 15, 1825
 GLO witnesses: WO 14-N59W-1.03 ch
 WO 11-N11E-76 lks

Additional historical data on back of sheet.

B. Description of corner evidence found and/or method applied in restoring or reestablishing corner:

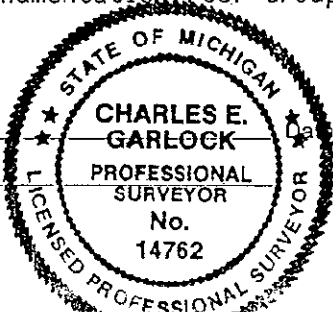
In a monument box, found a 3/4" I. Pipe at -0.9' and raised with a 1/2" I. rod to -0.1' set Liv. Co. Mon. cor. brass cap on top.

C. Description of monument for corner and accessories established to perpetuate locating the position of the corner:

I-13, Southwest corner Section 35 T3N-R4E, set Liv. Co. Mon, Cor. brass cap on top of 1/2" I. Rod.
 South-0.5'-centerline of Mason Road
 S24-33E-64.13'-spike E/s 7" Elm
 S85-36E-149.29'-spike S/s 40" Oak
 N8-57W-79.69'-spike E/s 8" Elm
 N77-09W-167.77'-spike S/s U. Pole

Approved by Livingston County Monumentation Peer Group August 18, 1993

Signed by Charles E Garlock



October 16, 1993

Surveyor's Michigan License No. 14762

10/20/93