

MAR 17 2000

SECTION

LAND CORNER RECORDATION CERTIFICATE  
Filing Requirement of Act 74, Mich. P.A. 1970

FILED

For corners in

<u>LIVINGSTON</u> (County)	Located In:	Corner Code #
1. Public Land Survey	<u>T 3 N R 4 E</u>	<u>K-02</u>
	T <u>   </u> R <u>   </u>	<u>          </u>
	T <u>   </u> R <u>   </u>	<u>          </u>
	T <u>   </u> R <u>   </u>	<u>          </u>
2. Property Controlling in Section	S <u>   </u> T <u>   </u> R <u>   </u>	<u>          </u>
	S <u>   </u> T <u>   </u> R <u>   </u>	<u>          </u>
3. Miscellaneous Property in Sec.	S <u>   </u> T <u>   </u> R <u>   </u>	<u>          </u>
	S <u>   </u> T <u>   </u> R <u>   </u>	<u>          </u>

1999 MAY 21 A 9 22

NANCY HAVILAND  
REGISTER OF DEEDS  
LIVINGSTON COUNTY, MI.  
48843

L.S.C.#1006 m

Register of Deeds Stamp & File Number

4. Lot No. \_\_\_\_\_, Recorded Plat \_\_\_\_\_  
5. Private Claims \_\_\_\_\_

I, JACK K SMITH, in a field survey on APRIL 30, 1999, do hereby state that under requirements of P.A. 74, Michigan P.A. of 1970, the corner points mentioned in lines 1 and 2 above were in conformance with regulations and rules therefore as required in the current manual of survey instructions of the United States Department of the Interior, Bureau of Land Management or by a decree of a Court of Law and/or that the corner points mentioned in lines 3, 4 and 5 above were in conformance with the rules of the Michigan Board of Land Surveyors or by a Decree of a Court of Law; established, re-established, monumented, recovered, found as expressed below:

NOTE: Not more than 2 corners, all in the same town and range, may be recorded on this certificate.

	A	B	C	D	E	F	G	H	I	J	K	L	M
1													
2		6		5		4		3		2	●	1	
3													
4		7		8		9		10		11		12	
5													
6		16		17		16		15		14		13	
7													
8		19		20		21		22		23		24	
9													
10		30		29		28		27		26		25	
11													
12		31		32		33		34		35		36	
13													

A. Description of original monument and accessories and/or subsequent restoration:

GLO 1825 SIBLEY SET POST  
ELM 6 S 22° E 12.5'  
MAPLE 11 N 47° W 2.6'

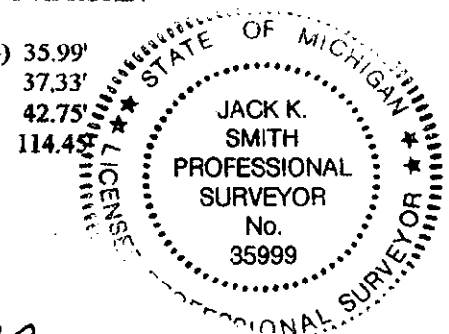
B. Description of corner evidence found and/or method applied in restoring or reestablishing corner:

FOUND BOAT SPIKE IN MONUMENT BOX FROM PREVIOUS WITNESSES. THIS POSITION IS THE ONLY ONE THAT APPEARS TO HAVE BEEN USED.

C. Description of monument for corner and accessories established to perpetuate locating the position of the corner:

K-02 WEST 1/4 CORNER SECTION 1 AND EAST 1/4 CORNER SECTION 2, T3N, R4E, HOWELL TOWNSHIP, LIVINGSTON COUNTY, MICHIGAN:  
SET 1 1/4" X 36" STEEL PIPE WITH 6" BREAK OFF SECTION AND LIVINGSTON COUNTY REMONUMENTATION BRASS CAP WITH SURVEYOR #35999 IN MONUMENT BOX 1.5 FEET WEST OF CENTER LINE OAK GROVE ROAD.

S60°E NAIL WITH LIVINGSTON COUNTY REMON TAG IN SOUTH SIDE ELM (S'LY OF 4) 35.99'  
N75°E NAIL WITH LIVINGSTON COUNTY REMON TAG IN SOUTH SIDE 10" ASH 37.33'  
N30°W NAIL WITH LIVINGSTON COUNTY REMON TAG IN NORTH SIDE 12" ELM 42.75'  
S80°W NORTHWEST CORNER OF GARAGE AT HOUSE #5495 114.45'



Signed by [Signature]

Date 5-11-1999

Surveyor's Michigan License No. 35999

P.A. 345 1980, APPROVED BY LIVINGSTON COUNTY  
PEER GROUP ON 4-7-99 CO. REP JED