

MAR 17 2000

SECTION

FILED

LAND CORNER RECORDATION CERTIFICATE
Filing Requirement of Act 74, Mich. P.A. 1970

1999 MAY 21 A 9:22

NANCY HAVILAND
REGISTER OF DEEDS
LIVINGSTON COUNTY, MI.
48843

L.S.C. #1012m

Register of Deeds Stamp & File Number

For corners in

LIVINGSTON
(County)

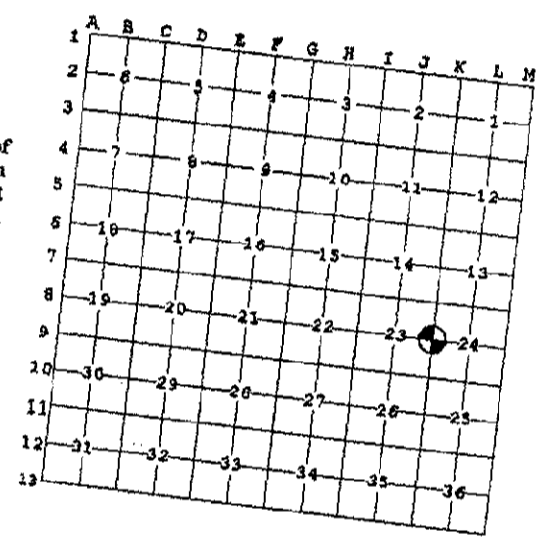
Located in:

Corner Code #

- 1. Public Land Survey T 3 N R 4 E K-08
- 2. Property Controlling in Section T R
- 3. Miscellaneous Property in Sec. S T R
- 4. Lot No. , Recorded Plat
- 5. Private Claims

I, JACK K SMITH, in a field survey on APRIL 30, 1999, do hereby state that under requirements of P.A. 74, Michigan P.A. of 1970, the corner points mentioned in lines 1 and 2 above were in conformance with regulations and rules therefore as required in the current manual of survey instructions of the United States Department of the Interior, Bureau of Land Management or by a decree of a Court of Law and/or that the corner points mentioned in lines 3, 4 and 5 above were in conformance with the rules of the Michigan Board of Land Surveyors or by a Decree of a Court of Law; established, re-established, monumented, recovered, found as expressed below:

NOTE: Not more than 2 corners, all in the same town and range, may be recorded on this certificate.



A. Description of original monument and accessories and/or subsequent restoration:
 GLO 1825 SIBLEY SET POST 5.3'
 TAMARAC 11 S 89° E
 MAPLE 6 S 72 1/2° W 4.0'

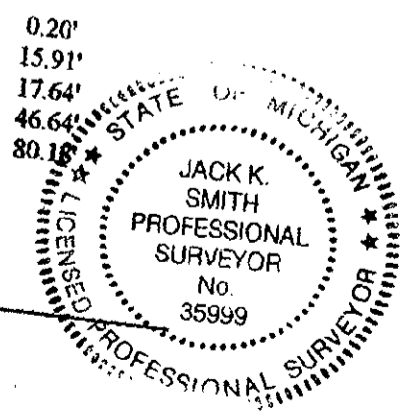
B. Description of corner evidence found and/or method applied in restoring or reestablishing corner:
 FOUND 1/2" REROD WITH BOSS CAP FROM PREVIOUS WITNESSES. THIS POSITION IS THE ONLY ONE THAT APPEARS TO HAVE BEEN USED.

C. Description of monument for corner and accessories established to perpetuate locating the position of the corner:
 K-08 EAST CORNER SECTION 23 AND WEST 1/4 CORNER SECTION 24, T3N, R4E, HOWELL TOWNSHIP, LIVINGSTON COUNTY, MICHIGAN:
 SET 1 1/4" X 36" STEEL PIPE WITH LIVINGSTON COUNTY REMONUMENTATION BRASS CAP STAMPED WITH SURVEYOR #35999 3 FEET SOUTH OF A CREEK.

- NORTH CARSONITE GUARD POST
- S05°E NAIL WITH LIVINGSTON COUNTY REMON TAG IN WEST SIDE 15" ELM
- S05°W NAIL WITH LIVINGSTON COUNTY REMON TAG IN WEST SIDE 16" OAK
- WEST NAIL WITH LIVINGSTON COUNTY REMON TAG IN SOUTH SIDE 12" ELM
- EAST NAIL WITH LIVINGSTON COUNTY REMON TAG IN SOUTH SIDE 8" ELM

Signed by [Signature]
 Surveyor's Michigan License No. 35999

Date 5-12-1999



P.A. 345 1990, APPROVED BY LIVINGSTON COUNTY
 PEER GROUP ON 4-7-1999, CO. REP JED