

SERVING LIVINGSTON COUNTY
SINCE 1868

"Be Sure of Your Ground"

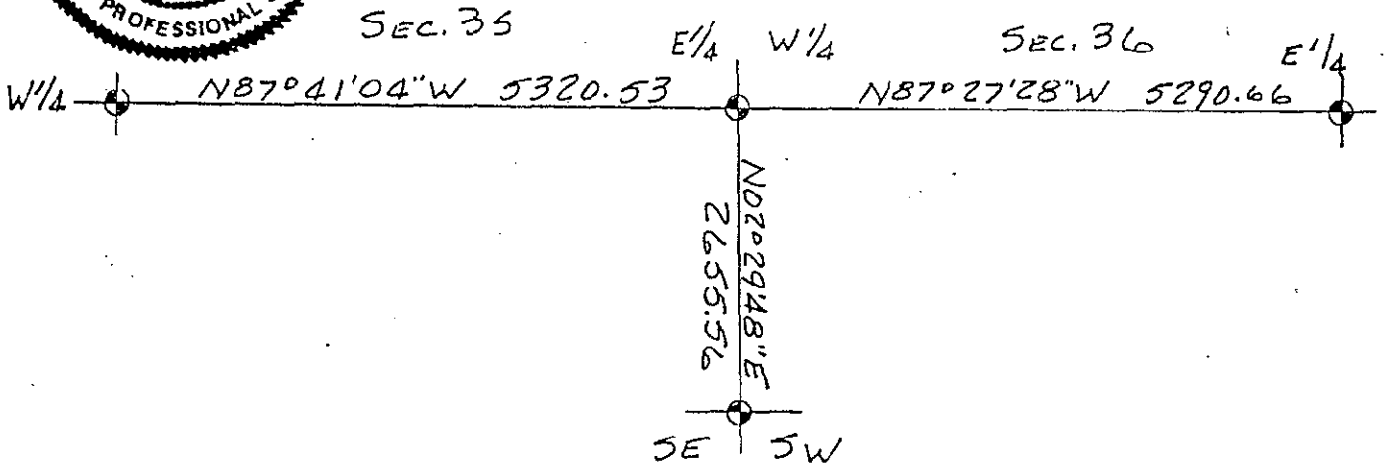
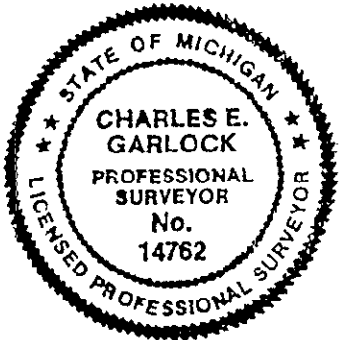
CHARLES E. GARLOCK
PROFESSIONAL SURVEYOR
840 EAST DAVIS ROAD
HOWELL, MICHIGAN 48843
OFFICE: (517) 546-3340
FAX: 517 546-2941

July 27, 1993

K-12: E 1/4 Corner Section 35 Howell Twp. Liv. Co. MI

Found 1" iron pipe in mon. box. Oldest known witness is 1967 when L.W. Munsell reset the Corner from irons found in "Assessor's Plat #1" which was surveyed in 1933 by C.W. Gordon. An Act 74 was recorded on the same iron by Washtenaw Engineering in 1973. Corner is in the centerline of Sibley and Gregory Sts. and lines to the North along the East line of "Assessor's Plat #1" and West line of "Crane-Brooks Addition to the Village (now City) of Howell". The 1" iron pipe is located in a mon. box in asphalt surface of a city street. Tall Maple trees line the street in all directions.

Charles E. Garlock, PS



8K16804

SUCCESSOR TO: JUNE 1993

- MILES W. BULLOCK, L.S. (1844 TO 1926) • GRANT H. DUNNING, P.E. (1865 TO 1928)
- CLAY W. GORDON, RLS (1883 TO 1970) • LYLE W. MUNSELL, RLS (1904 TO 1987)

