

SERVING LIVINGSTON COUNTY  
SINCE 1869

"Be Sure of Your Ground"

CHARLES E. GARLOCK

PROFESSIONAL SURVEYOR  
840 EAST DAVIS ROAD  
HOWELL, MICHIGAN 48843  
OFFICE: (517) 546-3340  
FAX: 517 546-2941

July 26, 1993

K-13: SW corner Section 36 Howell Twp. Liv. Co. MI

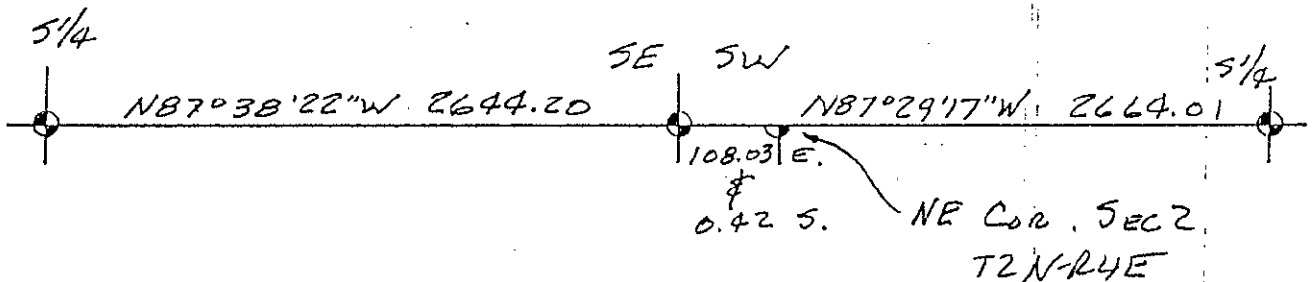
Oldest known witness is 1880 by M.W. Bullock but witness tree is gone today. Next oldest known witness is 1960 by L.W. Munsell and the corner lines with existing occupation to the North. In 1965 MDOT replaced found RR spike with a 3/4" iron pipe in a mon. box and measured East 107.97 feet to the NE corner Section 2, T2N-R4E. In 1960 L.W. Munsell measured 108.19 feet between section corners. At this time I've measured 108.03 feet between the same corners; Washtenaw Engineering has tied to the same corner in 1973. The mon. box is set in asphalt near the centerline of Mason Rd. with trees obstructing the Southwest and Northwest but fairly clear Northeast and Southeast.

Charles E. Garlock, PS



SEC. 35

SEC. 36



BK 16804

SUCCESSOR TO:

JUNE 1993

MILES W. BULLOCK, L.S. (1844 TO 1926)

GRANT H. DUNNING, P.E. (1865 TO 1928)

CLAY W. GORDON, RLS (1883 TO 1970)

LYLE W. MUNSELL, RLS (1904 TO 1987)

