

"Be Sure of Your Ground"

CHARLES E. GARLOCK
PROFESSIONAL SURVEYOR
840 EAST DAVIS ROAD
HOWELL, MICHIGAN 48843
OFFICE: (517) 546-3340
FAX: 517 546-2941

July 27, 1993

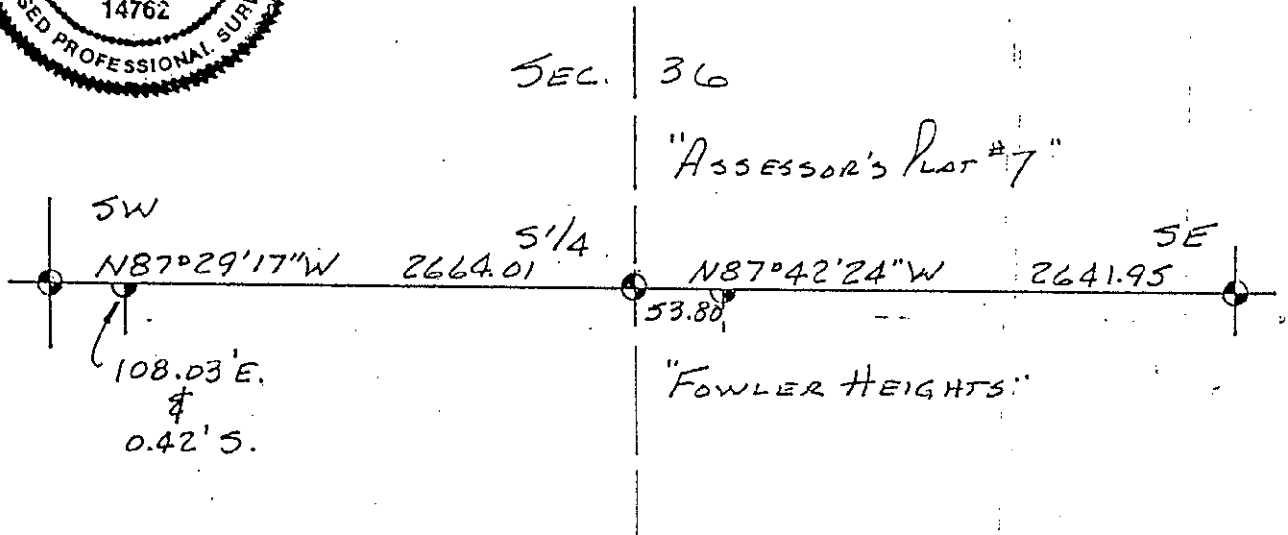
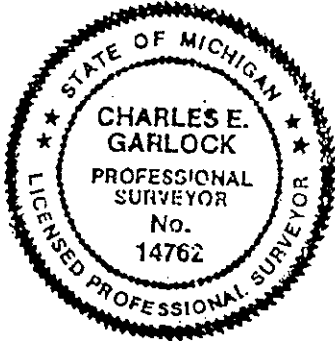
as County Surveyor

L-13: S $\frac{1}{4}$ Corner Section 36 Howell Twp. Liv. Co. MI

1/2 GLO JOG

Found 4" diameter concrete monument with $\frac{1}{2}$ " iron rod, no known witnesses. C.W. Gordon set concrete monument for $\frac{1}{4}$ Corner and SW Corner of "Assessor's Plat #7" in 1942 when he surveyed said plat. Surveys by Munsell-Garlock 1970 and Boss Engineering 1991 have used the same point and it is also the NW Corner of "Fowler Heights Subdivision" recorded in L22 Plats pg.30-32. The N $\frac{1}{4}$ Corner of Section 1 T2N-R4E is located on the South Section line 53.80 feet East, which is half the Township jog distance at the NW Corner Section 1 T2N-R4E. The S $\frac{1}{4}$ Corner Section 36 is located in a grove of Box Elders and the concrete monument rises about 0.3 feet above the surface of the ground.

Charles E. Garlock, PS



BK 16804 SUCCESSOR TO: JUNE 1993

MILES W. BULLOCK, L.S. (1844 TO 1926) GRANT H. DUNNING, P.E. (1865 TO 1928)

CLAY W. GORDON, RLS (1883 TO 1970) LYLE W. MUNSELL, RLS (1904 TO 1987)