

"Be Sure of Your Ground"

CHARLES E. GARLOCK

PROFESSIONAL SURVEYOR

840 EAST DAVIS ROAD
HOWELL, MICHIGAN 48843

OFFICE: (517) 546-3340

FAX: 517 546-2941

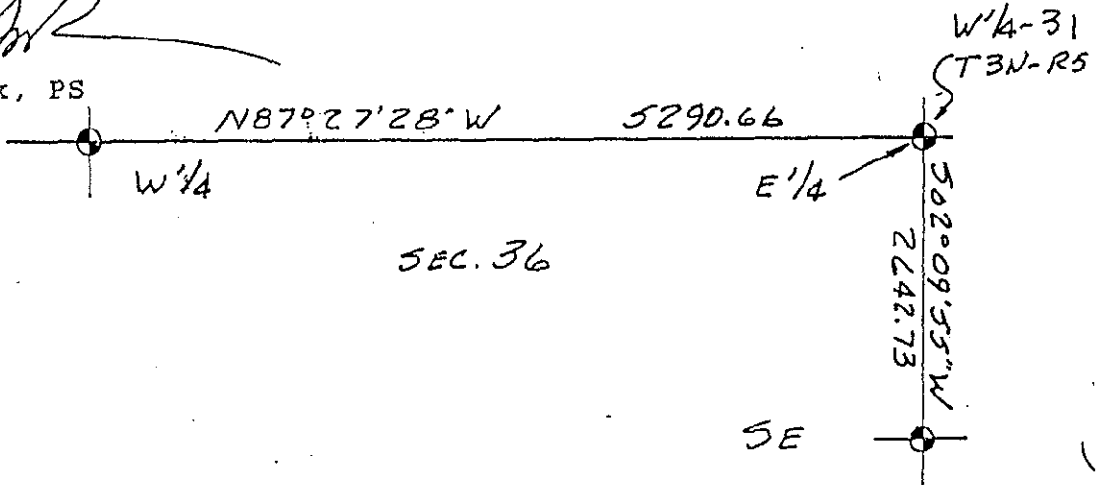
July 27, 1993

M-12: E 1/4 Corner Section 36 Howell Twp. Liv. Co. MI

Three Act 74's have been recorded. C. Smith of MDOT found a concrete monument with a 3/4" iron pipe at the SE Corner of "Roselawn Pointe Subdivision" L6-pg.20 in 1972, Grant Ward recorded same point in 1988 and I erroneously recorded a steel post in concrete 0.95 West of the concrete monument in 1972. No known witnesses prior to 1972, but Field Book Notes dated 1936 show the E 1/4 Corner to be in line with old fences North and West and a measure of 1399.2 feet South to the North ROW line of the Ann Arbor RR along the N-S Section line; this distance measured 1400.0 feet in 1974. Further descriptions and measures in 1936 (Bk.42 pg.3-7) show that the E 1/4 Corner Section 36 Howell Township is also the W 1/4 Corner Section 31 Oceola Township. A certain description begins 1.83 chains (120.78 feet) North of the W 1/4 Corner Section 31 Oceola Township on the South line of the Plat of "Howell Lake-Oak Grove Subdivision" (L2-pg.78); in 1956 L.W. Munsell (Bk.79 pg.35) measured 120.8 feet from the E 1/4 Corner of Section 36 Howell Township to the South line of said plat and he also measured 1400 feet South on the Section line to the North ROW line of the Ann Arbor RR. Measures East from the E 1/4 Corner to the West line of "Howell Lake-Oak Grove Subdivision" in 1936 were 400.00 feet and also again in 1977. All known surveys appear to start or tie to the concrete monument with a 3/4" iron pipe in the Center and encased in steel that call this point the E 1/4 Corner Section 36 Howell Township. (I May have mistaken the post in concrete for the concrete monument?) The monument is located about 0.5 feet below the surface of the ground and hidden by overhanging trees and a factory building to the Southwest.

Charles E. Garlock

Charles E. Garlock, PS



BK16804

SUCCESSOR TO: JUNE 1993

MILES W. BULLOCK, L.S. (1844 TO 1928)
CLAY W. GORDON, RLS (1883 TO 1970)

GRANT H DUNNING, P.E. (1865 TO 1928)
LYLE W. MUNSELL, RLS (1904 TO 1987)

