

**SURVEY & REMONUMENTATION**

FEB 25 1999

**LAND CORNER RECORDATION CERTIFICATE**  
Filing Requirement of Act 74, Mich. P.A. 1970

**FILED**

For corners in **SECTION**

<u>LIVINGSTON</u> (County)	Located In:	Corner Code #
1. Public Land Survey	<u>T3N R5E</u>	<u>I-05</u>
	T <u>    </u> R <u>    </u>	<u>    </u>
	T <u>    </u> R <u>    </u>	<u>    </u>
	T <u>    </u> R <u>    </u>	<u>    </u>
2. Property Controlling in Section	§ <u>    </u> T <u>    </u> R <u>    </u>	<u>    </u>
	§ <u>    </u> T <u>    </u> R <u>    </u>	<u>    </u>
3. Miscellaneous Property in Sec.	§ <u>    </u> T <u>    </u> R <u>    </u>	<u>    </u>
	§ <u>    </u> T <u>    </u> R <u>    </u>	<u>    </u>

1998 OCT 20 P 1:21

NANCY HAVILAND  
REGISTER OF DEEDS  
LIVINGSTON COUNTY, MI.  
48843

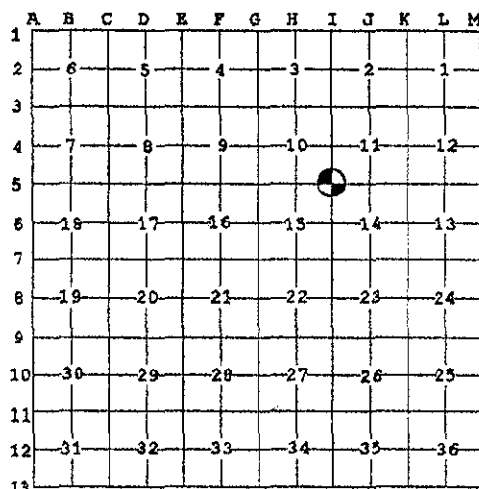
LSC 921M

Register of Deeds Stamp & File Number

4. Lot No. \_\_\_\_\_, Recorded Plat. \_\_\_\_\_  
5. Private Claims \_\_\_\_\_

I, MARY A. BARNWELL, in a field survey on AUGUST 17, 1998, do hereby state that under requirements of D.A. 74, Michigan P.A. of 1970, the corner points mentioned in lines 1 and 2 above were in conformance with regulations and rules therefore as required in the current manual of survey instructions of the United States Department of the Interior, Bureau of Land Management or by a decree of a Court of law and/or that the corner points mentioned in lines 3, 4 and 5 above were in conformance with the rules of the Michigan Board of Land Surveyors or by a Decree of a Court of law, established, re-established, monumented, recovered, found as expressed below:

NOTE: Not more than 2 corners, all in the same town and range, may be recorded on this certificate.



A. Description of original monument and accessories and/or subsequent restoration:

GLO 5/29/1823 BY SIBLEY  
W. OAK 16 NORTH 83 LKS (54.8')  
HICKORY 8 N 81 E 79 LKS (52.1')

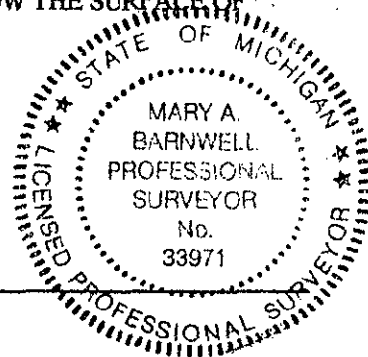
B. Description of corner evidence found and/or method applied in restoring or reestablishing corner:

FOUND A 1/2" STEEL PIPE IN A MONUMENT BOX 3 FEET WEST OF THE INTERSECTION OF CENTERLINE OF ARGENTINE ROAD (PAVED) AND CURDY ROAD (GRAVEL). THIS CORNER POSITION AGREES WELL WITH WITNESSES OF RECORD SINCE 1963.

C. Description of monument for corner and accessories established to perpetuate locating the position of the corner:

I-05 CORNER COMMON TO SECTIONS 10, 11, 14 AND 15, T3N, R5E OCEOLA TOWNSHIP, LIVINGSTON COUNTY, MICHIGAN: RESET THE FOUND 1/2" STEEL PIPE WITH 1 1/4" X 36" BREAKAWAY STEEL PIPE WITH LIVINGSTON COUNTY REMONUMENTATION BRASS CAP WITH SURVEYOR #35999 IN MONUMENT BOX 1/2 FOOT BELOW THE SURFACE OF ROAD.

- N66°E NAIL WITH LIVINGSTON COUNTY REMON TAG IN NORTH SIDE 5" HICKORY 36.99'
- S30°E NAIL WITH LIVINGSTON COUNTY REMON TAG IN WEST SIDE 6" FENCE POST 65.44'
- S64°W NAIL WITH LIVINGSTON COUNTY REMON TAG IN NORTH SIDE 40" OAK 54.67'
- N25°W NAIL WITH LIVINGSTON COUNTY REMON TAG IN EAST SIDE 8" MAPLE 54.90'



Signed by Mary A. Barnwell

Date 10/1/98

Surveyor's Michigan License No. 33971