

SURVEY & REMONUMENTATION

FEB 25 1999

FILED

SECTION

**LAND CORNER RECORDATION CERTIFICATE
Filing Requirement of Act 74, Mich. P.A. 1970**

1998 OCT 20 P 1:21

For corners in

LIVINGSTON
(County)

Located In:

Corner Code #

NANCY HAVILAND
REGISTER OF DEEDS
LIVINGSTON COUNTY, MI.
48843

- | | | | |
|------------------------------------|---|--------------------|-------------|
| 1. Public Land Survey | | <u>T 3 N R 5 E</u> | <u>J-03</u> |
| | | T R | |
| | | T R | |
| | | T R | |
| 2. Property Controlling in Section | § | T R | |
| | § | T R | |
| 3. Miscellaneous Property in Sec. | § | T R | |
| | § | T R | |

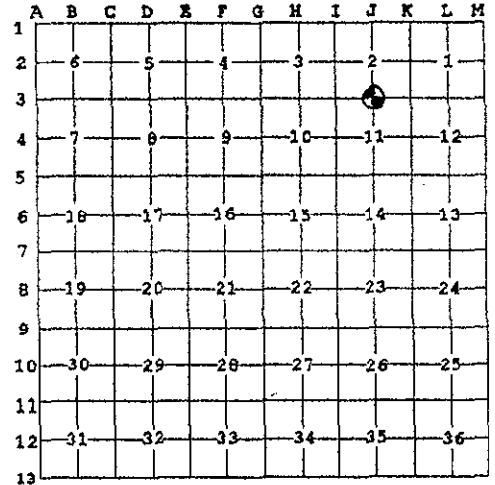
LSC 918M

Register of Deeds Stamp & File Number

4. Lot No. _____, Recorded Plat _____
5. Private Claims _____

I, MARY A. BARNWELL, in a field survey on AUGUST 17, 1998 do hereby state that under requirements of P.A. 74, Michigan P.A. of 1970, the corner points mentioned in lines 1 and 2 above were in conformance with regulations and rules therefore as required in the current manual of survey instructions of the United States Department of the Interior, Bureau of Land Management or by a decree of a Court of law and /or that the corner points mentioned in lines 3, 4 and 5 above were in conformance with the rules of the Michigan Board of Land Surveyors or by a Decree of a Court of law; established, re-established, monumented, recovered, found as expressed below:

NOTE: Not more than 2 corners, all in the same town and range, may be recorded on this certificate.



A. Description of original monument and accessories and/or subsequent restoration:

GLO 5-29-1823 BY SIBLEY
W. OAK 30 N 31 W 2.15 (141.9')
W. OAK 16 S 87 1/2 W 3.02 (199.3')

B. Description of corner evidence found and/or method applied in restoring or reestablishing corner:

FOUND A 1/2" STEEL REROD 3 FEET SOUTH OF THE CENTERLINE OF CLYDE ROAD (PAVED) WITH FENCE RUNNING TO THE NORTH. THIS CORNER POSITION AGREES WELL WITH WITNESSES OF RECORD SINCE 1973.

C. Description of monument for corner and accessories established to perpetuate locating the position of the corner:

**J-03 NORTH 1/4 CORNER SECTION 11, SOUTH 1/4 CORNER SECTION 2, T3N, R5E OCEOLA TOWNSHIP, LIVINGSTON COUNTY, MICHIGAN:
RESET FOUND 1/2" STEEL REROD WITH 1 1/4" X 36" BREAKAWAY STEEL PIPE WITH LIVINGSTON COUNTY REMONUMENTATION BRASS CAP WITH SURVEYOR #35999 IN MONUMENT BOX 1/4 FOOT BELOW THE SURFACE OF CLYDE ROAD.**

- | | | |
|-------|--|---------|
| N58°E | 1" X 36" PIPE WITH LIVINGSTON COUNTY REMON WITNESS BRASS CAP SURVEYOR #35999 | 37.90' |
| S20°E | 1" X 36" PIPE WITH LIVINGSTON COUNTY REMON WITNESS BRASS CAP SURVEYOR #35999 | 19.02' |
| S87°W | NAIL WITH LIVINGSTON COUNTY REMON TAG IN NORTH SIDE 22 LOCUST | 155.56' |
| N01°E | NAIL WITH LIVINGSTON COUNTY REMON TAG IN TOP OF 10" WOODEN FENCE CORNER POST | 42.11' |

Signed by Mary A. Barnwell

Date 10/1/98

Surveyor's Michigan License No. 33971



**P.A. 345 1990, APPROVED BY LIVINGSTON COUNTY
PEER GROUP ON 7/15/98, CO. REP JEO**