

SURVEY & REMONUMENTATION

FEB 24 1998

FILED

SECTION

LAND CORNER RECORDATION CERTIFICATE
Filing Requirement of Act 74, Mich. P.A. 1970

For corners in

LIVINGSTON
(County)

Located In:	Corner Code #
1. Public Land Survey	T <u>3N</u> R <u>6E</u> <u>B-13</u>
	T R
	T R
	T R
	T R
2. Property Controlling in Section	S T R
	S T R
3. Miscellaneous Property in Sec.	S T R
	S T R

1997 NOV 13 P 1:44

NANCY HAVILAND
REGISTER OF DEEDS
LIVINGSTON COUNTY, MI.
48843

L.S.C.#797m

Register of Deeds Stamp & File Number

4. Lot No. _____, Recorded Plat _____
5. Private Claims _____

	A	B	C	D	E	F	G	H	I	J	K	L	M
1													
2	6	5	4	3	2	1							
3													
4	7	8	9	10	11	12							
5													
6	18	17	16	15	14	13							
7													
8	19	20	21	22	23	24							
9													
10	30	29	28	27	26	25							
11													
12	31	32	33	34	35	36							
13													

I, Jack K. Smith, in a field survey on July 20, 1997 do hereby state that under requirements of P.A. 74, Michigan P.A. of 1970, the corner points mentioned in lines 1 and 2 above were in conformance with regulations and rules therefore as required in the current manual of survey instructions of the United States Department of the Interior, Bureau of Land Management or by a decree of a Court of Law and /or that the corner points mentioned in lines 3, 4 and 5 above were in conformance with the rules of the Michigan Board of Land Surveyors or by a Decree of a Court of Law; established, re-established, monumented, recovered, found as expressed below.

NOTE: Not more than 2 corners, all in the same town and range, may be recorded on this certificate.

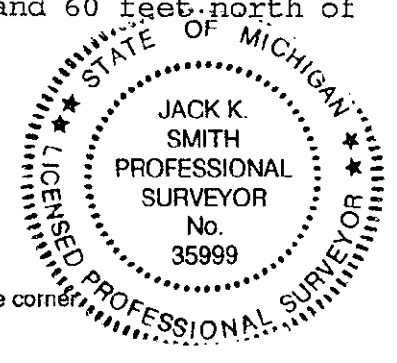
A. Description of original monument and accessories and/or subsequent restoration:

B-13 The South 1/4 Corner of Section 31, Hartland Township was set by Alex Holmes for the GLO in 1816.
The original witnesses are:
W Oak 15" N24°E 28 lk (18.5')
W Oak 12" S80°W 35 lk (23.1')

NOTE: NONE OF THE ORIGINAL WITNESSES COULD BE FOUND OR PERPETUATED.
SEE THE BACK OF THIS SHEET FOR ADDITIONAL HISTORICAL DATA.

B. Description of corner evidence found and/or method applied in restoring or reestablishing corner:

B-13 Found 3/4" steel pipe with Cap #33971 30 feet east and 60 feet north of the end of Liddy Drive.



C. Description of monument for corner and accessories established to perpetuate locating the position of the corner:

B-13 South 1/4 Corner, Section 31, T3N, R6E - Set 1 1/4" x 36" steel pipe with brass cap marked as "Livingston County Remonumentation Corner".

N32°W	Set nail/tag in NE side Twin 8" Oak	28.58'
N24°E	Set nail/tag in NW side 16" Oak	51.03'
N56°E	Set nail/tag in NW side 8" Cherry	27.43'
S06°E	Set nail/tag in West side 16" Oak	31.84'

Signed by Jack K. Smith
Surveyor's Michigan License No. 35999

Date July 20, 1997

May 5, 1997

B-13 T3N - R6E: SOUTH 1/4 CORNER, SECTION 31, HARTLAND TOWNSHIP

MONUMENTATION

We found a 3/4" pipe with Mary Barnwell's cap about 60 feet east of the centerline extension and 30 feet north of the end of bituminous of Liddy Drive about 3 feet west of the intersection of a power line going south, east and north. No record of the corner shows up until set by Barnwell at the prorated GLO distance. The corner lies in a stonepile. The closing corner to the east falls 30 feet south of the Township line.

MEASUREMENTS

Current measure is 2647.02 feet to the east and 2762.83 feet to the west. There were no previously recorded measures except by the GLO. The present corner position is about 30 feet north of the previously used north line of Brighton Township, but the location looks good when taking the other corners along the line into account.

OCCUPATION

The corner falls in a pile of stones and there are stones going north from the corner. There is no apparent occupation to the east or west. A sweep of the area did not reveal any additional irons and there was no evidence that any other corner position has been used.

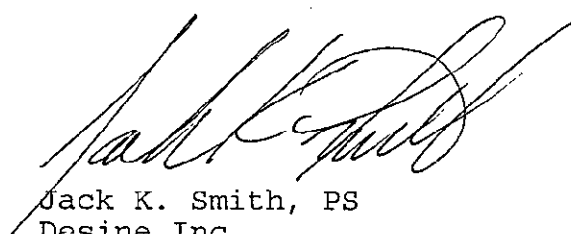
This corner can not be used for GPS due to trees.

RECORDATION

There are no Act 74s filed for this corner but the corner has been shown on 4 Act 132s by Desine, Inc.

SUMMARY

The iron that exists has been used for surveys in the area in recent years and would appear to match fairly well with occupation, therefor I recommend acceptance of the current pipe for the location of B-13.


Jack K. Smith, PS
Desine Inc.

