

SURVEY & REMONUMENTATION

FEB 25 1999

FILED

SECTION

LAND CORNER RECORDATION CERTIFICATE
Filing Requirement of Act 74, Mich. P.A. 1970

For corners in

<u>LIVINGSTON</u> (County)	Located in:	Corner Code #
1. Public Land Survey	T3N R 6E	G5
	T R	
	T R	
	T R	
2. Property Controlling in Section	S T R	
	S T R	
3. Miscellaneous Property in Sec.	S T R	
	S T R	

1998 OCT 20 P 1:21

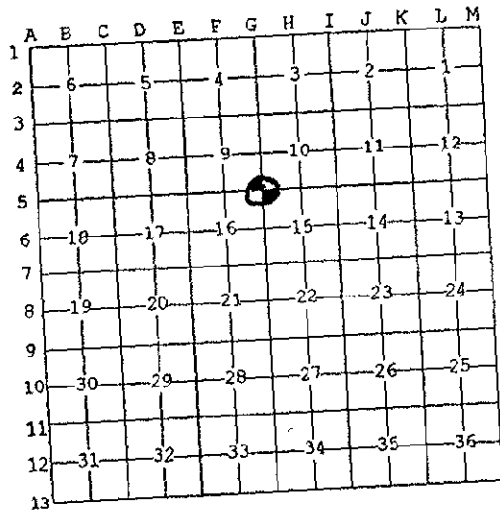
NANCY HAVILAND
REGISTER OF DEEDS
LIVINGSTON COUNTY, MI.
48843

LSC929M

Register of Deeds Stamp & File Number

- 4. Lot No. _____, Recorded Plat _____
- 5. Private Claims _____

I, MARY BARNWELL, in a field survey on AUG 20, 1998 do hereby state that under requirements of P.A. 74, Michigan P.A. of 1970, the corner points mentioned in lines 1 and 2 above were in conformance with regulations and rules therefore as required in the current manual of survey instructions of the United States Department of the Interior, Bureau of Land Management or by a decree of a Court of Law and/or that the corner points mentioned in lines 3, 4 and 5 above were in conformance with the rules of the Michigan Board of Land Surveyors or by a Decree of a Court of Law; established, re-established, monumented, recovered, found as expressed below:

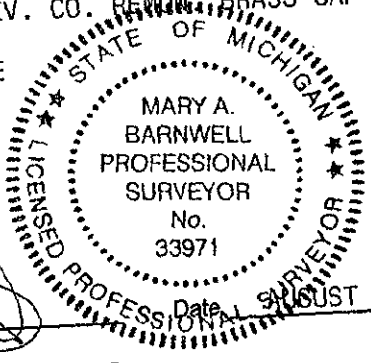


NOTE: Not more than 2 corners, all in the same town and range, may be recorded on this certificate.

A. Description of original monument and accessories and/or subsequent restoration:
GLO SURVEY DATED MAY 24, 1823 BY S SIBLEY AND NONE OF THE GLO WITNESSES REMAIN.
GLO WITNESSES: B016-N76½E-24.42'
B016-S44½W-13.20'

B. Description of corner evidence found and/or method applied in restoring or reestablishing corner:
FOUND 1/2" I. ROD IN MON. BOX ON C/L ROADS TO EAST AND SOUTH AND ON LINE WITH FENCE LINE TO THE NORTH AND HEDGE ROW TO THE WEST.

C. Description of monument for corner and accessories established to perpetuate locating the position of the corner:
G5: SW CORNER SEC. 10, T3N-R6E, HARTLAND TWP. LIV. CO. MI., REPLACED 1/2" I. ROD WITH 1 1/4" X 36" BREAKAWAY I. PIPE WITH LIV. CO. RECON. BRASS CAP ON TOP.
N10E-65.37'-SP & TAG W/S U. POLE
NORTH-65.81'-CTR. 2" STEEL POST IN CONCRETE
S85W-54.85'-SP & TAG S/S 12" OAK
S45E-28.00- C/L OF ASPHALT ROAD
S45W-54.24'-SP & TAG N/S 6" POPLAR



Signed by [Signature]
Surveyor's Michigan License No. 33971

Date AUGUST 21, 1998

PA. 345 1990, APPROVED BY LIVINGSTON COUNTY
PEER GROUP ON 8-19-98 CO. REP JED